

## Anti-CD299 (CLEC4M) Mouse Monoclonal Antibody [Clone ID: OTI10C3]

Catalog Number: M02814

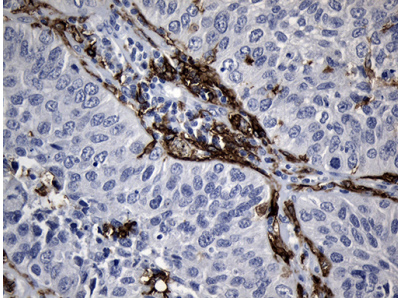
### Overview

Product Name	Anti-CD299 (CLEC4M) Mouse Monoclonal Antibody [Clone ID: OTI10C3]
Reactive Species	Human
Description	Boster Bio CLEC4M mouse monoclonal antibody, clone OTI10C3. Catalog# M02814. Tested in IHC. This antibody reacts with Human.
Application	IHC
Clonality	Monoclonal OTI10C3
Formulation	PBS (pH 7.3) containing 1% stabilizing protein, 50% glycerol and 0.02% sodium azide. This antibody is supplied in a stabilized formulation. Compatibility with conjugation reactions depends on the chemistry of the conjugation method used. For conjugation methods that are not compatible with the stabilizing components present in this formulation, a carrier-free antibody format is required.
Storage Instructions	Store at -20°C as received.
Host	Mouse
Uniprot ID	Q9H2X3

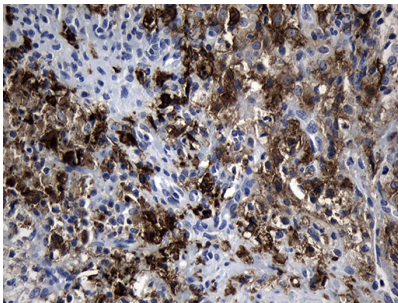
### Technical Details

Immunogen	Human recombinant protein fragment corresponding to amino acids 74-329 of human CLEC4M (NP_055072) produced in E.coli.
Isotype	IgG1
Concentration	1 mg/ml
Purification	Purified from mouse ascites fluids or tissue culture supernatant by affinity chromatography (protein A/G)
Suggested Dilutions	IHC 1:150

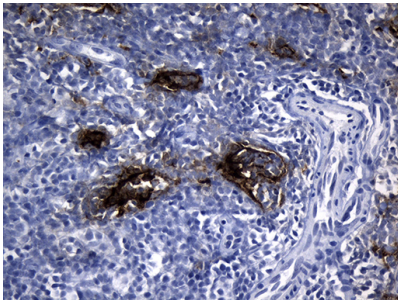
## Anti-CD299 (CLEC4M) Mouse Monoclonal Antibody [Clone ID: OTI10C3] (M02814) Images



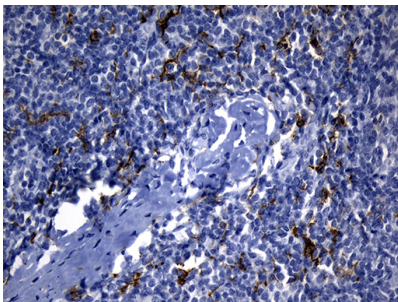
Immunohistochemical staining of paraffin-embedded Carcinoma of Human lung tissue using anti-CLEC4M mouse monoclonal antibody. (Heat-induced epitope retrieval by 1mM EDTA in 10mM Tris buffer (pH8.5) at 120°C for 3min)



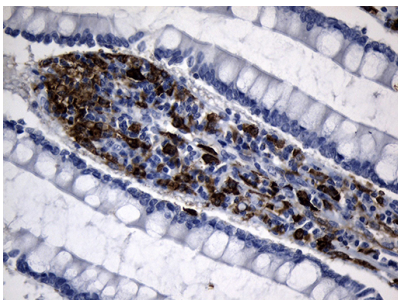
Immunohistochemical staining of paraffin-embedded Human Ovary tissue within the normal limits using anti-CLEC4M mouse monoclonal antibody. (Heat-induced epitope retrieval by 1mM EDTA in 10mM Tris buffer (pH8.5) at 120°C for 3min)



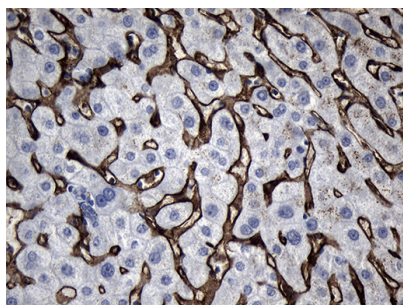
Immunohistochemical staining of paraffin-embedded Human lymph node tissue within the normal limits using anti-CLEC4M mouse monoclonal antibody. (Heat-induced epitope retrieval by 1mM EDTA in 10mM Tris buffer (pH8.5) at 120°C for 3min)



Immunohistochemical staining of paraffin-embedded Human tonsil tissue within the normal limits using anti-CLEC4M mouse monoclonal antibody. (Heat-induced epitope retrieval by 1mM EDTA in 10mM Tris buffer (pH8.5) at 120°C for 3min)



Immunohistochemical staining of paraffin-embedded Human colon tissue within the normal limits using anti-CLEC4M mouse monoclonal antibody. (Heat-induced epitope retrieval by 1mM EDTA in 10mM Tris buffer (pH8.5) at 120°C for 3min)



Immunohistochemical staining of paraffin-embedded Human liver tissue within the normal limits using anti-CLEC4M mouse monoclonal antibody. (Heat-induced epitope retrieval by 1mM EDTA in 10mM Tris buffer (pH8.5) at 120Å°C for 3min)

## Submit a product review to Biocompare.com

Submit a review of this product to Biocompare.com to receive a \$20 Amazon.com giftcard! Your reviews help your fellow scientists make the right decisions. Thank you for your contribution.



Anti-CD299 (CLEC4M) Mouse Monoclonal Antibody [Clone ID: OTI10C3]

For Research Use Only. Not for use in diagnostic procedures.