

Anti-SULT2A1 Mouse Monoclonal Antibody [Clone ID: OTI4D7]

Catalog Number: M02839

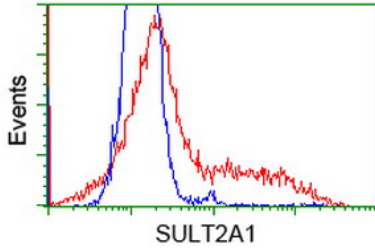
Overview

Product Name	Anti-SULT2A1 Mouse Monoclonal Antibody [Clone ID: OTI4D7]
Reactive Species	Human
Description	Boster Bio Anti-SULT2A1 mouse monoclonal antibody, clone OTI4D7 (formerly 4D7). Catalog# M02839. Tested in FC, IF, WB. This antibody reacts with Human.
Conjugate	Unconjugated
Application	Flow Cytometry, IF, WB
Clonality	Monoclonal OTI4D7
Formulation	PBS (pH 7.3) containing 1% stabilizing protein, 50% glycerol and 0.02% sodium azide. This antibody is supplied in a stabilized formulation. Compatibility with conjugation reactions depends on the chemistry of the conjugation method used. For conjugation methods that are not compatible with the stabilizing components present in this formulation, a carrier-free antibody format is required.
Storage Instructions	Store at -20°C for one year. For short term storage and frequent use, store at 4°C for up to one month. Avoid repeated freeze-thaw cycles.
Host	Mouse
Uniprot ID	Q06520

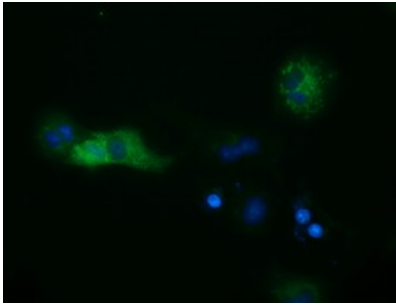
Technical Details

Immunogen	Full length human recombinant protein of human SULT2A1 (NP_003158) produced in HEK293T cell.
Isotype	IgG1
Concentration	0.36 mg/ml
Purification	Purified from mouse ascites fluids or tissue culture supernatant by affinity chromatography (protein A/G)
Suggested Dilutions	WB 1:1000~2000 IF 1:100 Flow Cytometry 1:100

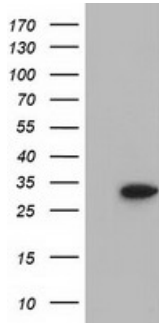
Anti-SULT2A1 Mouse Monoclonal Antibody [Clone ID: OTI4D7] (M02839) Images



HEK293T cells transfected with either SULT2A1 (Myc-DDK-tagged) overexpress plasmid (Red) or empty vector control plasmid (Blue) were immunostained by anti-SULT2A1 antibody (M02839)



Anti-SULT2A1 mouse monoclonal antibody (M02839) immunofluorescent staining of COS7 cells transiently transfected by pCMV6-ENTRY SULT2A1.



HEK293T cells were transfected with the pCMV6-ENTRY control (Left lane) or pCMV6-ENTRY SULT2A1 (Right lane) cDNA for 48 hrs and lysed. Equivalent amounts of cell lysates (5 ug per lane) were separated by SDS-PAGE and immunoblotted with anti-SULT2A1.

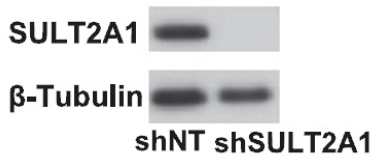
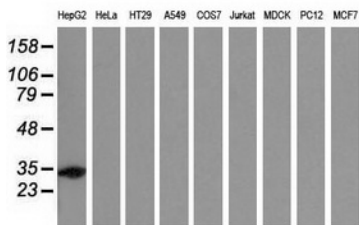


Figure from citation: Western Blot of SULT2A1 protein level by using anti-SULT2A1 antibody in human HepG2 cells. Dilution: 1:5000



Western blot analysis of extracts (35ug) from 9 different cell lines by using anti-SULT2A1 monoclonal antibody.

Submit a product review to [Biocompare.com](https://www.biocompare.com)

Submit a review of this product to [Biocompare.com](https://www.biocompare.com) to receive a \$20 Amazon.com giftcard! Your reviews help your fellow scientists make the right decisions. Thank you for your contribution.



Anti-SULT2A1 Mouse Monoclonal Antibody [Clone ID: OTI4D7]

For Research Use Only. Not for use in diagnostic procedures.