

## Anti-PSMA FOLH1 Rabbit Monoclonal Antibody, Clone#RM327

Catalog Number: M02846-1

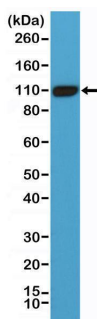
### Overview

|                      |  |
|----------------------|--|
| Product Name         | Anti-PSMA FOLH1 Rabbit Monoclonal Antibody, Clone#RM327  |
| Reactive Species     | Human  |
| Description          | Boster Bio Anti-PSMA FOLH1 Rabbit Monoclonal Antibody, Clone#RM327 (Catalog # M02846-1). Tested in IHC, WB applications. This antibody reacts with Human.  |
| Application          | IHC, WB  |
| Clonality            | Monoclonal RM327   |
| Formulation          | 50% Glycerol/PBS with 1% stabilizing protein and 0.09% sodium azide<br>This antibody is supplied in a stabilized formulation.<br>Compatibility with conjugation reactions depends on the chemistry of the conjugation method used.<br>For conjugation methods that are not compatible with the stabilizing components present in this formulation, a carrier-free antibody format is required. |
| Storage Instructions | Store at -20°C for one year. Avoid repeated freeze-thaw cycles.  |
| Host                 | Rabbit   |
| Uniprot ID           | Q04609   |

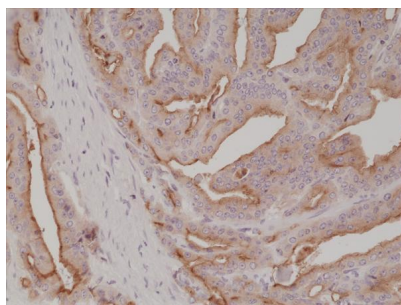
### Technical Details

|                     |  |
|---------------------|--|
| Immunogen           | A peptide corresponding to the C-terminus of human PSMA (Prostate-specific membrane antigen).            |
| Cross Reactivity    | This antibody reacts to human PSMA (Prostate-specific membrane antigen).                                 |
| Isotype             | Rabbit IgG   |
| Form                | Liquid   |
| Concentration       | 0.5-1mg/ml, actual concentration vary by lot. Use suggested dilution ratio to decide dilution procedure. |
| Purification        | Protein A affinity purified from an animal origin-free culture supernatant                               |
| Suggested Dilutions | Immunohistochemistry (IHC): 1:500-1:1000 dilution<br>WB: 1:1000-1:2000 dilution.                         |

## Anti-PSMA FOLH1 Rabbit Monoclonal Antibody, Clone#RM327 (M02846-1) Images



Western Blotting result Western Blot of LNCaP cell lysate using anti-PSMA rabbit monoclonal antibody (Clone RM327) at a 1:1000 dilution.



IHC result Immunohistochemical staining of formalin fixed and paraffin embedded human prostate cancer tissue section using anti-PSMA rabbit monoclonal antibody (Clone RM327) at a 1:1000 dilution.

### Submit a product review to Biocompare.com

Submit a review of this product to Biocompare.com to receive a \$20 Amazon.com giftcard! Your reviews help your fellow scientists make the right decisions. Thank you for your contribution.



Anti-PSMA FOLH1 Rabbit Monoclonal Antibody, Clone#RM327

For Research Use Only. Not for use in diagnostic procedures.