

Anti-PSMA (FOLH1) Mouse Monoclonal Antibody [Clone ID: OTI3H5]

Catalog Number: M02846-3

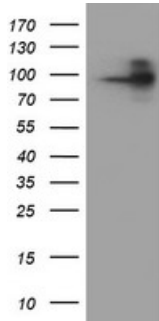
Overview

Product Name	Anti-PSMA (FOLH1) Mouse Monoclonal Antibody [Clone ID: OTI3H5]
Reactive Species	Human, Mouse
Description	Boster Bio FOLH1 mouse monoclonal antibody, clone OTI3H5 (formerly 3H5). Catalog# M02846-3. Tested in FC, IF, IHC, WB. This antibody reacts with Human, Mouse.
Application	Flow Cytometry, IF, IHC, WB
Clonality	Monoclonal OTI3H5
Formulation	PBS (PH 7.3) containing 1% BSA, 50% glycerol and 0.02% sodium azide.
Storage Instructions	Store at -20°C as received.
Host	Mouse
Uniprot ID	Q04609

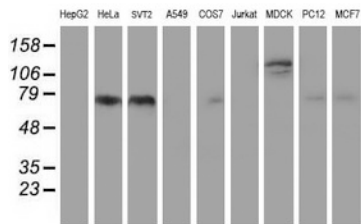
Technical Details

Immunogen	Full length human recombinant protein of human FOLH1 (NP_004467) produced in HEK293T cell.
Isotype	IgG1
Concentration	0.71 mg/ml
Purification	Purified from mouse ascites fluids or tissue culture supernatant by affinity chromatography (protein A/G)
Suggested Dilutions	Dilute the sample so that the expected range of concentrations fall within the detection range of this kit. If the expected range of concentration is unknown, a pilot test should be conducted to decide the optimal dilution ratio for your samples. Some PubMed article(s) citing the expression level of this target are as follows:

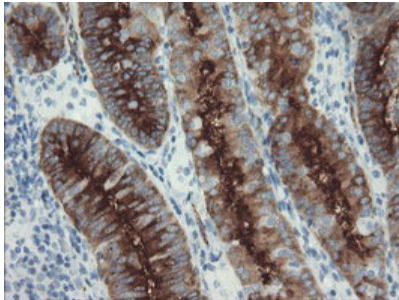
Anti-PSMA (FOLH1) Mouse Monoclonal Antibody [Clone ID: OTI3H5] (M02846-3) Images



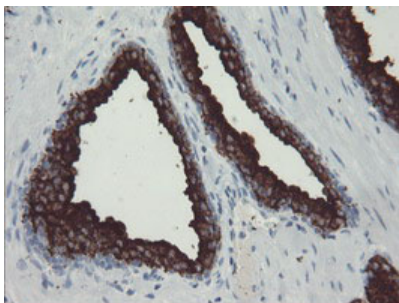
HEK293T cells were transfected with the pCMV6-ENTRY control (Left lane) or pCMV6-ENTRY FOLH1 (Right lane) cDNA for 48 hrs and lysed. Equivalent amounts of cell lysates (5 ug per lane) were separated by SDS-PAGE and immunoblotted with anti-FOLH1.



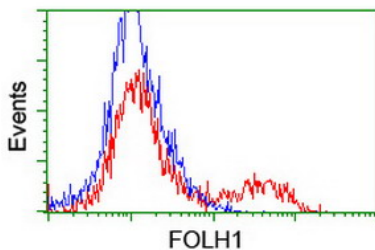
Western blot analysis of extracts (35ug) from 9 different cell lines by using anti-FOLH1 monoclonal antibody (HepG2: human; HeLa: human; SVT2: mouse; A549: human; COS7: monkey; Jurkat: human; MDCK: canine; PC12: rat; MCF7: human).



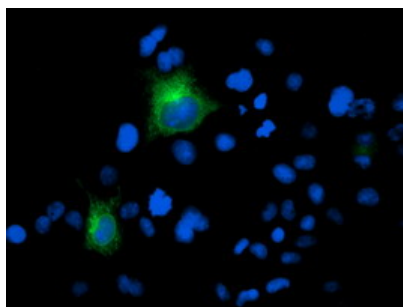
Immunohistochemical staining of paraffin-embedded Adenocarcinoma of Human endometrium tissue using anti-FOLH1 mouse monoclonal antibody. (Heat-induced epitope retrieval by 10mM citric buffer)



Immunohistochemical staining of paraffin-embedded Carcinoma of Human prostate tissue using anti-FOLH1 mouse monoclonal antibody. (Heat-induced epitope retrieval by 10mM citric buffer)



HEK293T cells transfected with either FOLH1 (Myc-DDK-tagged) overexpress plasmid (Red) or empty vector control plasmid (Blue) were immunostained by anti-FOLH1 antibody (M02846-3)



Anti-FOLH1 mouse monoclonal antibody (M02846-3)
immunofluorescent staining of COS7 cells transiently
transfected by pCMV6-ENTRY FOLH1.

Submit a product review to Biocompare.com

Submit a review of this product to Biocompare.com to receive a \$20 Amazon.com giftcard! Your reviews help your fellow scientists make the right decisions. Thank you for your contribution.



Anti-PSMA (FOLH1) Mouse Monoclonal Antibody [Clone ID: OTI3H5]