

## Anti-TAB1 Monoclonal Antibody

Catalog Number: M02847-1

### About TAB1

Anti-Procalcitonin antibody detects human Procalcitonin. Procalcitonin is a peptide hormone mainly produced by the C cells of the thyroid and certain endocrine cells of the lung. Under normal expression conditions, procalcitonin is immediately cleaved into three specific fragments, a N terminal residue, calcitonin and katacalcin. Levels of unprocessed procalcitonin rise significantly after bacterial infection, trauma or shock. This gene encodes the peptide hormones calcitonin, calcitonin gene-related peptide and katacalcin by tissue-specific alternative RNA splicing of the gene transcripts and cleavage of inactive precursor proteins. Calcitonin is involved in calcium regulation and acts to regulate phosphorus metabolism. Calcitonin gene-related peptide functions as a vasodilator while katacalcin is a calcium-lowering peptide. Multiple transcript variants encoding different isoforms have been found for this gene.

### Overview

Product Name	Anti-TAB1 Monoclonal Antibody
Reactive Species	Bovine, Canine, Human, Mouse, Rat, Swine
Description	Boster Bio Anti-TAB1 Monoclonal Antibody catalog # M02847-1. Tested in WB applications. This antibody reacts with Bovine, Canine, Human, Mouse, Rat, Swine.
Application	WB
Clonality	Monoclonal 4H9E7
Formulation	Purified mouse monoclonal in buffer containing 0.1M Tris-Glycine (pH 7.4, 150 mM NaCl) with 0.2% sodium azide, 50% glycerol.
Storage Instructions	Store at -20°C for one year. For short term storage and frequent use, store at 4°C for up to one month. Avoid repeated freeze-thaw cycles.
Host	Mouse
Uniprot ID	Q15750

### Technical Details

Immunogen	Purified recombinant human TAB1 (N-terminal) protein fragments expressed in E.coli.
Predicted Reactive Species	Chimpanzee, Macaque
Cross Reactivity	No cross reactivity with other proteins.
Isotype	IgG
Form	Liquid
Concentration	1 mg/ml

Purification	Affinity purification
Suggested Dilutions	<p>Dilute the sample so that the expected range of concentrations fall within the detection range of this kit.</p> <p>If the expected range of concentration is unknown, a pilot test should be conducted to decide the optimal dilution ratio for your samples.</p> <p>Some PubMed article(s) citing the expression level of this target are as follows:</p> <p>Boster Bio's internal QC testing used:</p> <p>WB 1:1000-1:2000</p>

## Anti-TAB1 Monoclonal Antibody (M02847-1) Images

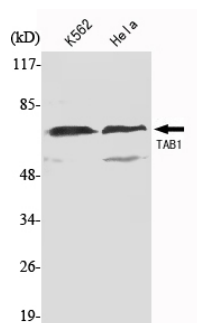


Figure 1. Western blotting validation for Anti-TAB1 Monoclonal Antibody M02847-1

Western Blot (WB) analysis using TAB1 Monoclonal Antibody against K562

### Submit a product review to Biocompare.com

Submit a review of this product to Biocompare.com to receive a \$20 Amazon.com giftcard! Your reviews help your fellow scientists make the right decisions. Thank you for your contribution.



Anti-TAB1 Monoclonal Antibody