

Anti-LAG3 / CD223 Reference Antibody (relatlimab)

Catalog Number: M02869-4

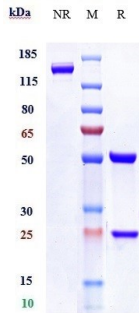
Overview

Product Name	Anti-LAG3 / CD223 Reference Antibody (relatlimab)
Reactive Species	Cynomolgus monkey, Human
Description	Boster Bio Anti-LAG3 / CD223 Reference Antibody (relatlimab) (Catalog # M02869-4). Tested in Flow Cytometry, ELISA, FTA. This antibody reacts with Cynomolgus monkey, Human. Endotoxin: < 0.755EU/ug,determined by LAL method. Expression system: CHO Cell
Application	ELISA, Flow Cytometry, Functional Assay, Kinetics
Clonality	Monoclonal
Formulation	Purified monoclonal antibody supplied in PBS, pH6.0, without preservative.This antibody is purified through a protein A column.
Storage Instructions	Maintain refrigerated at 2-8°C for up to 2 weeks. For long-term storage, aliquot and store at -20°C to avoid repeated freeze-thaw cycles.
Uniprot ID	P18627

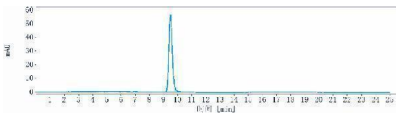
Technical Details

Isotype	IgG4SP
Form	Liquid

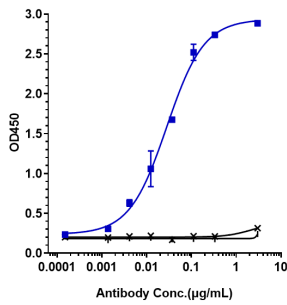
Anti-LAG3 / CD223 Reference Antibody (relatlimab) (M02869-4) Images



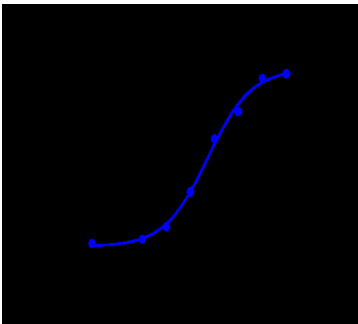
Anti-LAG3/CD223 Reference Antibody (relatlimab) on SDS-PAGE under reducing (R) condition. The gel was stained with Coomassie Blue. The purity of the protein is greater than 95%



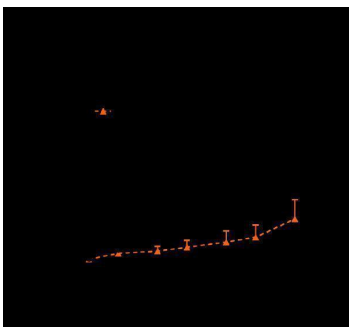
The purity of Anti-LAG3/CD223 Reference Antibody (relatlimab) is more than 100%



Immobilized human LAG3 His at 2 µg/mL can bind Anti-LAG3/CD223 Reference Antibody (relatlimab)



Human LAG3 CHO cells were stained with Anti-LAG3/CD223 Reference Antibody (relatlimab) and negative control protein respectively



Relatlimab inhibited the tumor growth of MC38 on Human LAG3 mice. The result showed significant anti-tumor effects

Submit a review of this product to Biocompare.com to receive a \$20 Amazon.com giftcard! Your reviews help your fellow scientists make the right decisions. Thank you for your contribution.



Anti-LAG3 / CD223 Reference Antibody (relatlimab)

For Research Use Only. Not for use in diagnostic procedures.