

## Anti-NAA10 Antibody (Center)

Catalog Number: M02890

### About NAA10

Catalytic subunit of the N-terminal acetyltransferase A (NatA) complex which displays alpha (N-terminal) acetyltransferase activity. The NAT activity may be important for vascular, hematopoietic and neuronal growth and development. Without NAA15, displays epsilon (internal) acetyltransferase activity towards HIF1A, thereby promoting its degradation. Represses MYLK kinase activity by acetylation, and thus represses tumor cell migration. Acetylates, and stabilizes TSC2, thereby repressing mTOR activity and suppressing cancer development.

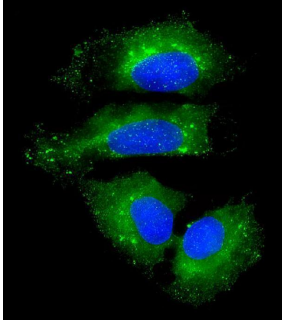
### Overview

Product Name	Anti-NAA10 Antibody (Center)
Reactive Species	Human
Description	Boster Bio Anti-NAA10 Antibody (Center) (Catalog # M02890). Tested in WB, IF application(s). This antibody reacts with Human.
Application	IF, WB
Clonality	Polyclonal
Formulation	Purified polyclonal antibody supplied in PBS with 0.09% (W/V) sodium azide.
Storage Instructions	Maintain refrigerated at 2-8°C for up to 2 weeks. For long-term storage, store at -20°C in small aliquots to prevent freeze-thaw cycles.
Host	Rabbit
Uniprot ID	P41227

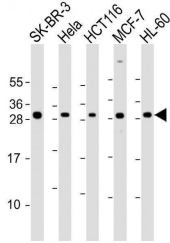
### Technical Details

Immunogen	This NAA10 antibody is generated from a rabbit immunized with a KLH conjugated synthetic peptide between 135-167 amino acids from the Central region of human NAA10.
Predicted Reactive Species	Bovine, Mouse
Isotype	Rabbit IgG
Purification	This antibody is purified through a protein A column, followed by peptide affinity purification.
Suggested Dilutions	IF: 1:25 WB: 1:2000

## Anti-NAA10 Antibody (Center) (M02890) Images



Immunofluorescent analysis of 4% paraformaldehyde-fixed, 0.1% Triton X-100 permeabilized U-2 OS (human osteosarcoma cell line) cells labeling NAA10 with M02890 at 1/25 dilution, followed by Dylight® 488-conjugated goat anti-rabbit IgG secondary antibody at 1/200 dilution (green). Immunofluorescence image showing cytoplasm and weak nuclear staining on U-2 OS cell line. The nuclear counter stain is DAPI (blue).



All lanes : Anti-NAA10 Antibody (Center) at 1:2000 dilution  
Lane 1: SK-BR-3 whole cell lysate  
Lane 2: Hela whole cell lysate  
Lane 3: HCT116 whole cell lysate  
Lane 4: MCF-7 whole cell lysate  
Lane 5: HL-60 whole cell lysate  
Lysates/proteins at 20 µg per lane. Secondary Goat Anti-Rabbit IgG, (H+L), Peroxidase conjugated at 1/10000 dilution. Predicted band size : 26 kDa  
Blocking/Dilution buffer: 5% NFD/MTBST.

## Submit a product review to Biocompare.com

Submit a review of this product to Biocompare.com to receive a \$20 Amazon.com giftcard! Your reviews help your fellow scientists make the right decisions. Thank you for your contribution.



Anti-NAA10 Antibody (Center)

For Research Use Only. Not for use in diagnostic procedures.