

Anti-E2F2 Rabbit Monoclonal Antibody

Catalog Number: M02896

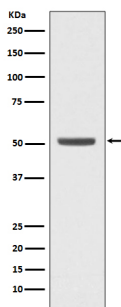
Overview

Product Name	Anti-E2F2 Rabbit Monoclonal Antibody
Reactive Species	Human, Mouse, Rat
Description	Boster Bio Anti-E2F2 Rabbit Monoclonal Antibody catalog # M02896. Tested in WB, Flow Cytometry applications. This antibody reacts with Human, Mouse, Rat.
Application	Flow Cytometry, WB
Clonality	Monoclonal GGC-5
Formulation	Rabbit IgG in stabilizing components, phosphate buffered saline, pH 7.4, 150mM NaCl, 0.02% sodium azide and 50% glycerol. *This antibody is supplied in a stabilized formulation. Compatibility with conjugation reactions depends on the chemistry of the conjugation method used. For conjugation methods that are not compatible with the stabilizing components present in this formulation, a carrier-free antibody format is required.
Storage Instructions	Store at -20°C for one year. For short term storage and frequent use, store at 4°C for up to one month. Avoid repeated freeze-thaw cycles.
Host	Rabbit
Uniprot ID	Q14209

Technical Details

Immunogen	A synthesized peptide derived from human E2F2
Isotype	Rabbit IgG
Form	Liquid
Concentration	0.5mg/ml
Purification	Affinity-chromatography
Suggested Dilutions	WB 1:1000-1:2000 FC 1:100

Anti-E2F2 Rabbit Monoclonal Antibody (M02896) Images



Western blot analysis of E2F2 expression in K562 cell lysate.

1 Publications Citing This Product

1. PubMed ID: 26378521, GCN5 Potentiates Glioma Proliferation and Invasion via STAT3 and AKT Signaling Pathways

Visit bosterbio.com/anti-e2f2-rabbit-monoclonal-antibody-m02896-boster.html to see all 1 publications.

Submit a product review to Biocompare.com

Submit a review of this product to Biocompare.com to receive a \$20 Amazon.com giftcard! Your reviews help your fellow scientists make the right decisions. Thank you for your contribution.



Anti-E2F2 Rabbit Monoclonal Antibody

For Research Use Only. Not for use in diagnostic procedures.