

Anti-MSI2/Musashi 2 Rabbit Monoclonal Antibody

Catalog Number: M02898

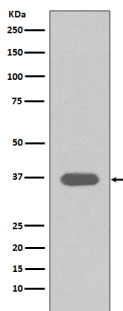
Overview

Product Name	Anti-MSI2/Musashi 2 Rabbit Monoclonal Antibody
Reactive Species	Human, Mouse, Rat
Description	Boster Bio Anti-MSI2/Musashi 2 Rabbit Monoclonal Antibody catalog # M02898. Tested in WB, IHC, ICC/IF, Flow Cytometry applications. This antibody reacts with Human, Mouse, Rat.
Application	Flow Cytometry, IF, IHC, ICC, WB
Clonality	Monoclonal FOB-13
Formulation	Rabbit IgG in stabilizing components, phosphate buffered saline, pH 7.4, 150mM NaCl, 0.02% sodium azide and 50% glycerol. *This antibody is supplied in a stabilized formulation. Compatibility with conjugation reactions depends on the chemistry of the conjugation method used. For conjugation methods that are not compatible with the stabilizing components present in this formulation, a carrier-free antibody format is required.
Storage Instructions	Store at -20°C for one year. For short term storage and frequent use, store at 4°C for up to one month. Avoid repeated freeze-thaw cycles.
Host	Rabbit
Uniprot ID	Q96DH6

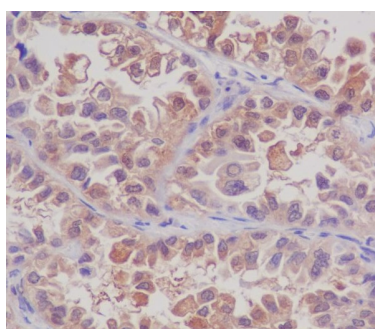
Technical Details

Immunogen	A synthesized peptide derived from human MSI2
Isotype	Rabbit IgG
Form	Liquid
Concentration	0.5mg/ml
Purification	Affinity-chromatography
Suggested Dilutions	WB 1:500-2000 IHC 1:50-200 ICC/IF 1:50-200 FC 1:30

Anti-MSI2/Musashi 2 Rabbit Monoclonal Antibody (M02898) Images



Western blot analysis of MSI2 expression in T47 D cell lysate.



Immunohistochemical analysis of paraffin-embedded human lung carcinoma, using MSI2 Antibody.

Submit a product review to [Biocompare.com](https://www.biocompare.com)

Submit a review of this product to [Biocompare.com](https://www.biocompare.com) to receive a \$20 Amazon.com giftcard! Your reviews help your fellow scientists make the right decisions. Thank you for your contribution.



Anti-MSI2/Musashi 2 Rabbit Monoclonal Antibody

For Research Use Only. Not for use in diagnostic procedures.