

Anti-MEK3 (MAP2K3) Mouse Monoclonal Antibody [Clone ID: OTI5D3]

Catalog Number: M02916-2

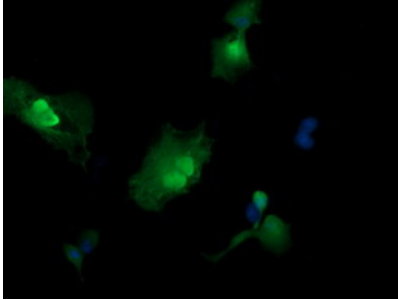
Overview

| | |
|----------------------|--------------------------------------------------------------------------------------------------------------------------------------------------------------------------------------------------------------------------------------------------------------------------------------------------------------------------------------------------------------------------------------------------------|
| Product Name | Anti-MEK3 (MAP2K3) Mouse Monoclonal Antibody [Clone ID: OTI5D3] |
| Reactive Species | Dog, Human, Monkey, Mouse, Rat |
| Description | Boster Bio MAP2K3 mouse monoclonal antibody, clone OTI5D3. Catalog# M02916-2. Tested in IF, IHC, WB. This antibody reacts with Human, Monkey, Mouse, Rat, Dog. |
| Conjugate | Unconjugated |
| Application | IF, IHC, WB |
| Clonality | Monoclonal OTI5D3 |
| Formulation | PBS (pH 7.3) containing 1% stabilizing protein, 50% glycerol and 0.02% sodium azide. This antibody is supplied in a stabilized formulation. Compatibility with conjugation reactions depends on the chemistry of the conjugation method used. For conjugation methods that are not compatible with the stabilizing components present in this formulation, a carrier-free antibody format is required. |
| Storage Instructions | Store at -20°C for one year. For short term storage and frequent use, store at 4°C for up to one month. Avoid repeated freeze-thaw cycles. |
| Host | Mouse |
| Uniprot ID | P46734 |

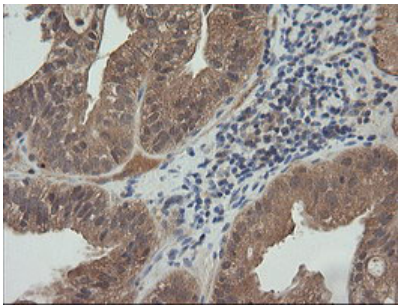
Technical Details

| | |
|---------------------|-----------------------------------------------------------------------------------------------------------|
| Immunogen | Full length human recombinant protein of human MAP2K3 (NP_659731) produced in HEK293T cell. |
| Isotype | IgG2a |
| Concentration | 1 mg/ml |
| Purification | Purified from mouse ascites fluids or tissue culture supernatant by affinity chromatography (protein A/G) |
| Suggested Dilutions | WB 1:200~2000 IHC 1:150 IF 1:100 |

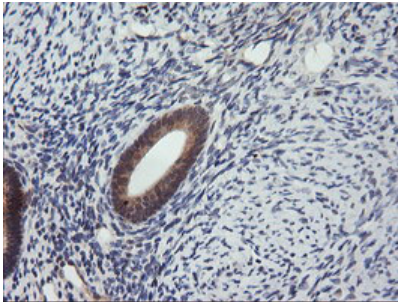
Anti-MEK3 (MAP2K3) Mouse Monoclonal Antibody [Clone ID: OTI5D3] (M02916-2) Images



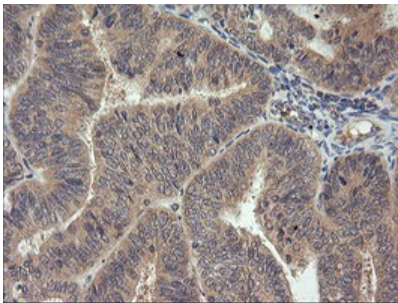
Anti-MAP2K3 mouse monoclonal antibody (M02916-2) immunofluorescent staining of COS7 cells transiently transfected by pCMV6-ENTRY MAP2K3.



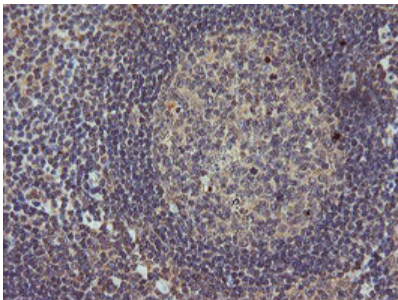
Immunohistochemical staining of paraffin-embedded Adenocarcinoma of Human ovary tissue using anti-MAP2K3 mouse monoclonal antibody. (Heat-induced epitope retrieval by 10mM citric buffer)



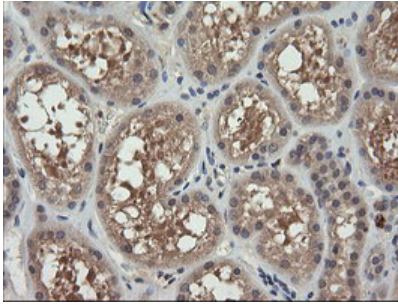
Immunohistochemical staining of paraffin-embedded Human endometrium tissue within the normal limits using anti-MAP2K3 mouse monoclonal antibody. (Heat-induced epitope retrieval by 10mM citric buffer)



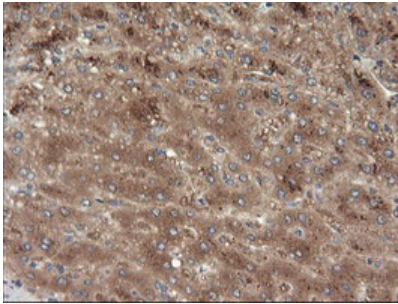
Immunohistochemical staining of paraffin-embedded Adenocarcinoma of Human endometrium tissue using anti-MAP2K3 mouse monoclonal antibody. (Heat-induced epitope retrieval by 10mM citric buffer)



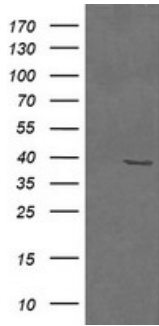
Immunohistochemical staining of paraffin-embedded Human tonsil within the normal limits using anti-MAP2K3 mouse monoclonal antibody. (Heat-induced epitope retrieval by 10mM citric buffer)



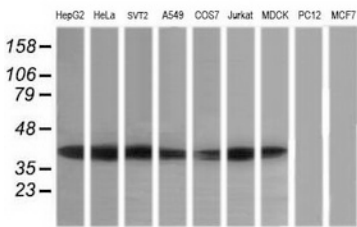
Immunohistochemical staining of paraffin-embedded Human Kidney tissue within the normal limits using anti-MAP2K3 mouse monoclonal antibody. (Heat-induced epitope retrieval by 10mM citric buffer)



Immunohistochemical staining of paraffin-embedded Human liver tissue within the normal limits using anti-MAP2K3 mouse monoclonal antibody. (Heat-induced epitope retrieval by 10mM citric buffer)



HEK293T cells were transfected with the pCMV6-ENTRY control (Left lane) or pCMV6-ENTRY MAP2K3 (Right lane) cDNA for 48 hrs and lysed. Equivalent amounts of cell lysates (5 ug per lane) were separated by SDS-PAGE and immunoblotted with anti-MAP2K3.



Western blot analysis of extracts (35ug) from 9 different cell lines by using anti-MAP2K3 monoclonal antibody (HepG2: human; HeLa: human; SVT2: mouse; A549: human; COS7: monkey; Jurkat: human; MDCK: canine; PC12: rat; MCF7: human).

Submit a product review to Biocompare.com

Submit a review of this product to Biocompare.com to receive a \$20 Amazon.com giftcard! Your reviews help your fellow scientists make the right decisions. Thank you for your contribution.



Anti-MEK3 (MAP2K3) Mouse Monoclonal Antibody [Clone ID: OT15D3]

For Research Use Only. Not for use in diagnostic procedures.