

Anti-MEK3 (MAP2K3) Mouse Monoclonal Antibody [Clone ID: OTI2A7]

Catalog Number: M02916-3

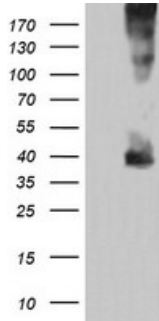
Overview

Product Name	Anti-MEK3 (MAP2K3) Mouse Monoclonal Antibody [Clone ID: OTI2A7]
Reactive Species	Dog, Human, Monkey, Mouse, Rat
Description	Boster Bio MAP2K3 (MEK3) mouse monoclonal antibody, clone OTI2A7 (formerly 2A7). Catalog# M02916-3. Tested in IF, IHC, WB. This antibody reacts with Human, Monkey, Mouse, Rat, Dog.
Application	IF, IHC, WB
Clonality	Monoclonal OTI2A7
Formulation	PBS (pH 7.3) containing 1% stabilizing protein, 50% glycerol and 0.02% sodium azide. This antibody is supplied in a stabilized formulation. Compatibility with conjugation reactions depends on the chemistry of the conjugation method used. For conjugation methods that are not compatible with the stabilizing components present in this formulation, a carrier-free antibody format is required.
Storage Instructions	Store at -20°C as received.
Host	Mouse
Uniprot ID	P46734

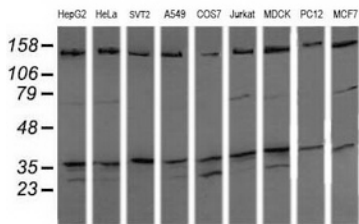
Technical Details

Immunogen	Full length human recombinant protein of human MAP2K3 (NP_659731) produced in HEK293T cell.
Isotype	IgG2b
Concentration	1 mg/ml
Purification	Purified from mouse ascites fluids or tissue culture supernatant by affinity chromatography (protein A/G)
Suggested Dilutions	WB 1:200~2000 IHC 1:150 IF 1:100

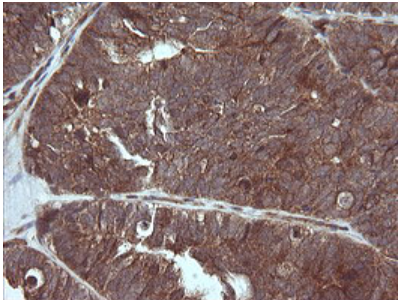
Anti-MEK3 (MAP2K3) Mouse Monoclonal Antibody [Clone ID: OTI2A7] (M02916-3) Images



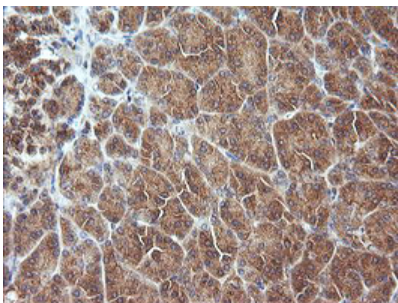
HEK293T cells were transfected with the pCMV6-ENTRY control (Left lane) or pCMV6-ENTRY MAP2K3 (Right lane) cDNA for 48 hrs and lysed. Equivalent amounts of cell lysates (5 ug per lane) were separated by SDS-PAGE and immunoblotted with anti-MAP2K3.



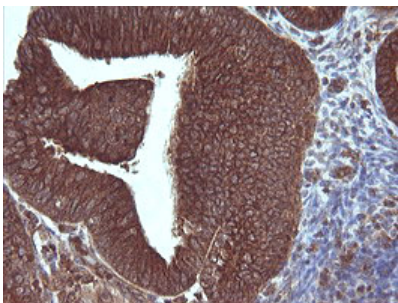
Western blot analysis of extracts (35ug) from 9 different cell lines by using anti-MAP2K3 monoclonal antibody (HepG2: human; HeLa: human; SVT2: mouse; A549: human; COS7: monkey; Jurkat: human; MDCK: canine; PC12: rat; MCF7: human).



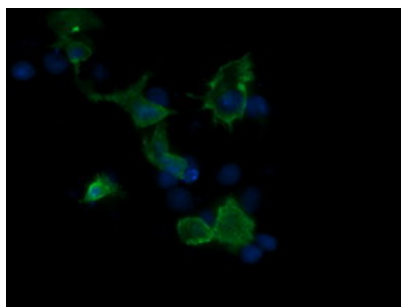
Immunohistochemical staining of paraffin-embedded Adenocarcinoma of Human ovary tissue using anti-MAP2K3 mouse monoclonal antibody. (Heat-induced epitope retrieval by 10mM citric buffer)



Immunohistochemical staining of paraffin-embedded Human pancreas tissue within the normal limits using anti-MAP2K3 mouse monoclonal antibody. (Heat-induced epitope retrieval by 10mM citric buffer)



Immunohistochemical staining of paraffin-embedded Adenocarcinoma of Human endometrium tissue using anti-MAP2K3 mouse monoclonal antibody. (Heat-induced epitope retrieval by 10mM citric buffer)



Anti-MAP2K3 mouse monoclonal antibody (M02916-3)
immunofluorescent staining of COS7 cells transiently
transfected by pCMV6-ENTRY MAP2K3.

Submit a product review to Biocompare.com

Submit a review of this product to Biocompare.com to receive a \$20 Amazon.com giftcard! Your reviews help your fellow scientists make the right decisions. Thank you for your contribution.



Anti-MEK3 (MAP2K3) Mouse Monoclonal Antibody [Clone ID: OTI2A7]

For Research Use Only. Not for use in diagnostic procedures.