

## Anti-NSE ENO2 Rabbit Monoclonal Antibody

Catalog Number: M02930-1

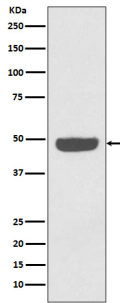
### Overview

Product Name	Anti-NSE ENO2 Rabbit Monoclonal Antibody
Reactive Species	Human, Mouse, Rat
Description	Boster Bio Anti-NSE ENO2 Rabbit Monoclonal Antibody catalog # M02930-1. Tested in WB, IHC, ICC/IF, Flow Cytometry applications. This antibody reacts with Human, Mouse, Rat.
Application	Flow Cytometry, IF, IHC, ICC, WB
Clonality	Monoclonal FBI-5
Formulation	Rabbit IgG in stabilizing components, phosphate buffered saline, pH 7.4, 150mM NaCl, 0.02% sodium azide and 50% glycerol. *This antibody is supplied in a stabilized formulation. Compatibility with conjugation reactions depends on the chemistry of the conjugation method used. For conjugation methods that are not compatible with the stabilizing components present in this formulation, a carrier-free antibody format is required.
Storage Instructions	Store at -20°C for one year. For short term storage and frequent use, store at 4°C for up to one month. Avoid repeated freeze-thaw cycles.
Host	Rabbit
Uniprot ID	P09104

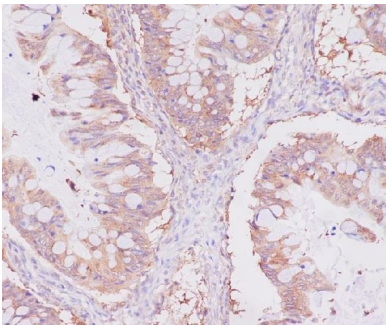
### Technical Details

Immunogen	A synthesized peptide derived from human NSE
Isotype	Rabbit IgG
Form	Liquid
Concentration	0.5mg/ml
Purification	Affinity-chromatography
Suggested Dilutions	WB 1:1000-5000 IHC 1:50-200 ICC/IF 1:50-200 FC 1:20

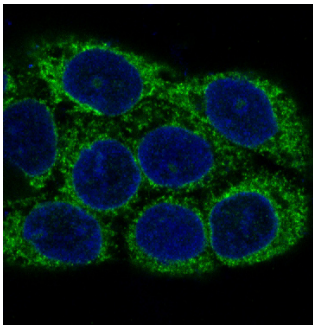
## Anti-NSE ENO2 Rabbit Monoclonal Antibody (M02930-1) Images



Western blot analysis of NSE expression in HeLa cell lysate.



Immunohistochemical analysis of paraffin-embedded human uterus cancer, using NSE Antibody.



Immunofluorescent analysis of A431 cells, using NSE Antibody.

## 13 Publications Citing This Product

1. PubMed ID: 25317155, Optimal therapeutic dose and time window of picoside II in cerebral ischemic injury
2. PubMed ID: 21720702, Involvement of calmodulin and actin in directed differentiation of rat cortical neural stem cells into neurons
3. PubMed ID: 24841897, Elemene inhibits stemness, promotes differentiation and impairs chemoresistance to temozolomide in glioblastoma stem-like cells

Visit [bosterbio.com/anti-nse-rabbit-monoclonal-antibody-m02930-1-boster.html](http://bosterbio.com/anti-nse-rabbit-monoclonal-antibody-m02930-1-boster.html) to see all 13 publications.

## Submit a product review to Biocompare.com

Submit a review of this product to Biocompare.com to receive a \$20 Amazon.com giftcard! Your reviews help your fellow scientists make the right decisions. Thank you for your contribution.



**Anti-NSE ENO2 Rabbit Monoclonal Antibody**

For Research Use Only. Not for use in diagnostic procedures.