

Anti-Neuron Specific Enolase (NSE) Eno2 Antibody

Catalog Number: M02930-2

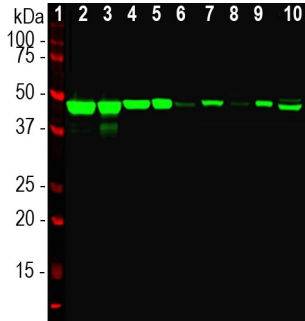
Overview

Product Name	Anti-Neuron Specific Enolase (NSE) Eno2 Antibody
Reactive Species	Human, Mouse, Rat
Description	Boster Bio Anti-Neuron Specific Enolase (NSE) Eno2 Antibody catalog # M02930-2. Tested in IF, IHC, ICC, WB applications. This antibody reacts with Human, Mouse, Rat.
Application	IF, IHC, ICC, WB
Clonality	Polyclonal
Formulation	Antibody is supplied as an aliquot of serum
Storage Instructions	Store at -20°C for one year. For short term storage and frequent use, store at 4°C for up to one month. Avoid repeated freeze-thaw cycles.
Host	Rabbit
Uniprot ID	P17183

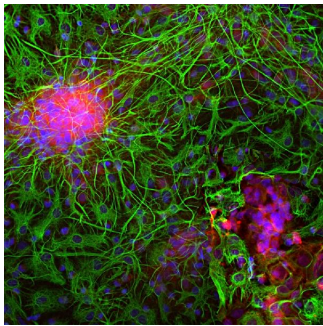
Technical Details

Immunogen	Recombinant full length human NSE purified from E. coli
Concentration	0.5-1mg/ml, actual concentration vary by lot. Use suggested dilution ratio to decide dilution procedure.
Suggested Dilutions	<p>Dilute the sample so that the expected range of concentrations fall within the detection range of this kit.</p> <p>If the expected range of concentration is unknown, a pilot test should be conducted to decide the optimal dilution ratio for your samples.</p> <p>Some PubMed article(s) citing the expression level of this target are as follows: Boster Bio's internal QC testing used WB: 1:2000 IF/ICC and IHC: 1:500</p> <p>For protocols, please visit https://www.bosterbio.com/protocol-and-troubleshooting/</p>

Anti-Neuron Specific Enolase (NSE) Eno2 Antibody (M02930-2) Images



Western blot analysis of different tissue and cell lysates using rabbit pAb to neuron specific enolase (NSE), M02930-2, dilution 1:5,000 in green: [1] protein standard (red), [2] rat brain, [3] rat spinal cord, [4] mouse brain, [5] mouse spinal cord, [6] NIH-3T3, [7] HEK293, [8] HeLa, [9] SH-SY5Y, and [10] C6 cells. A single band at about 47kDa corresponds to the NSE protein, seen only in extracts containing neurons or neuronal lineage cells.



Immunofluorescent analysis of mixed cortical neuron-glia cell culture from E20 rat stained with rabbit pAb to neuron specific enolase (NSE), RPCA-NSE, dilution 1:500 in red, and costained with chicken pAb to GFAP, CPCA-GFAP, dilution 1:5,000 in green. The blue is Hoechst staining of nuclear DNA. The NSE antibody labels protein expressed in neuronal cells, while the GFAP antibody stains intermediate filaments in astrocytic and certain other glial cells.

8 Publications Citing This Product

1. PubMed ID: 10.3760/cma.j.issn.0366-6999.2010.24.020, Neuroprotective effects of salvianolic acid B against oxyglucose deprivation/reperfusion damage in primary rat cortical neurons
2. PubMed ID: 21720702, Involvement of calmodulin and actin in directed differentiation of rat cortical neural stem cells into neurons
3. PubMed ID: 24841897, Elemene inhibits stemness, promotes differentiation and impairs chemoresistance to temozolomide in glioblastoma stem-like cells

Visit bosterbio.com/anti-neuron-specific-enolase-nse-antibody-m02930-2-boster.html to see all 8 publications.

Submit a product review to Biocompare.com

Submit a review of this product to Biocompare.com to receive a \$20 Amazon.com giftcard! Your reviews help your fellow scientists make the right decisions. Thank you for your contribution.



Anti-Neuron Specific Enolase (NSE) Eno2 Antibody