

Anti-Islet-1 ISL1 Monoclonal Antibody

Catalog Number: M02969-2

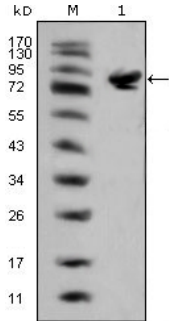
Overview

Product Name	Anti-Islet-1 ISL1 Monoclonal Antibody
Reactive Species	Human
Description	Boster Bio Anti-Islet-1 ISL1 Monoclonal Antibody catalog # M02969-2. Tested in ELISA, IF, IHC, WB applications. This antibody reacts with Human.
Application	ELISA, IF, IHC, WB
Clonality	Monoclonal 1H9
Formulation	Ascitic fluid containing 0.03% sodium azide.
Storage Instructions	Store at -20°C for one year. For short term storage and frequent use, store at 4°C for up to one month. Avoid repeated freeze-thaw cycles.
Host	Mouse
Uniprot ID	P61371

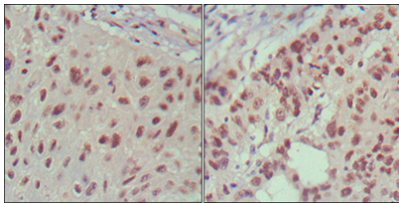
Technical Details

Immunogen	Purified recombinant fragment of human Islet-1 expressed in E. Coli.
Cross Reactivity	No cross reactivity with other proteins.
Isotype	IgG
Form	Liquid
Concentration	1 mg/ml
Purification	Affinity purification
Suggested Dilutions	WB 1:500-1:2000 IHC 1:200-1:1000 IF 1:200-1:1000 ELISA 1:10000

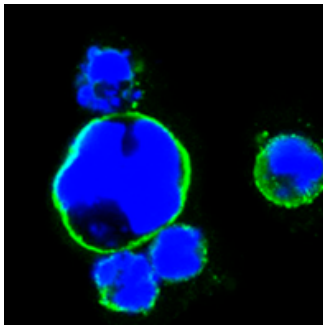
Anti-Islet-1 ISL1 Monoclonal Antibody (M02969-2) Images



Western blotting validation for Anti-Islet-1 ISL1 Monoclonal Antibody M02969-2 Western Blot (WB) analysis using Islet-1 Monoclonal Antibody against full-length ISL1 (aa1-349)-hlgGfc transfected HEK293 cell lysate(1). Electrophoresis was performed on a SDS-PAGE gel. To determine SDS-PAGE gel concentration



Immunohistochemistry validation of ISL1 using Anti-Islet-1 ISL1 Monoclonal Antibody (M02969-2). Immunohistochemistry (IHC) analysis of paraffin-embedded human lung cancer (left) and cervical carcinoma (right)



Immunofluorescent staining data of ISL1 using Anti-Islet-1 ISL1 Monoclonal Antibody (M02969-2). Confocal Immunofluorescence (IF) analysis of HEK293 cells transfected with full-length ISL1-hlgGfc using Islet-1 Monoclonal Antibody (green). Blue: DRAQ5 fluorescent DNA dye.

Submit a product review to Biocompare.com

Submit a review of this product to Biocompare.com to receive a \$20 Amazon.com giftcard! Your reviews help your fellow scientists make the right decisions. Thank you for your contribution.



Anti-Islet-1 ISL1 Monoclonal Antibody

For Research Use Only. Not for use in diagnostic procedures.