

Anti-GOLPH2 (GOLM1) Mouse Monoclonal Antibody [Clone ID: OTI2D6]

Catalog Number: M02975-1

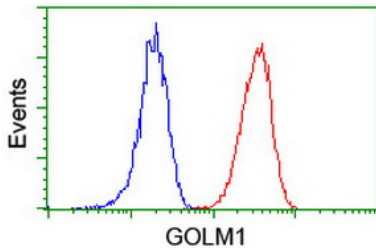
Overview

Product Name	Anti-GOLPH2 (GOLM1) Mouse Monoclonal Antibody [Clone ID: OTI2D6]
Reactive Species	Human
Description	Boster Bio GOLM1 mouse monoclonal antibody, clone OTI2D6 (formerly 2D6). Catalog# M02975-1. Tested in FC, IF, IHC, WB. This antibody reacts with Human.
Conjugate	Unconjugated
Application	Flow Cytometry, IF, IHC, WB
Clonality	Monoclonal OTI2D6
Formulation	PBS (pH 7.3) containing 1% stabilizing protein, 50% glycerol and 0.02% sodium azide. This antibody is supplied in a stabilized formulation. Compatibility with conjugation reactions depends on the chemistry of the conjugation method used. For conjugation methods that are not compatible with the stabilizing components present in this formulation, a carrier-free antibody format is required.
Storage Instructions	Store at -20°C for one year. For short term storage and frequent use, store at 4°C for up to one month. Avoid repeated freeze-thaw cycles.
Host	Mouse
Uniprot ID	Q8NBJ4

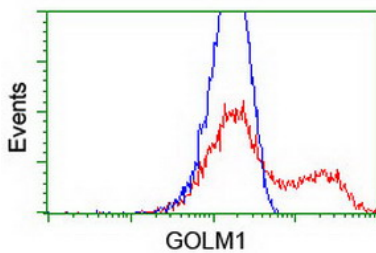
Technical Details

Immunogen	Full length human recombinant protein of human GOLM1 (NP_808800) produced in HEK293T cell.
Isotype	IgG2a
Concentration	0.98 mg/ml
Purification	Purified from mouse ascites fluids or tissue culture supernatant by affinity chromatography (protein A/G)
Suggested Dilutions	WB 1:2000 IHC 1:150 IF 1:100 Flow Cytometry 1:100

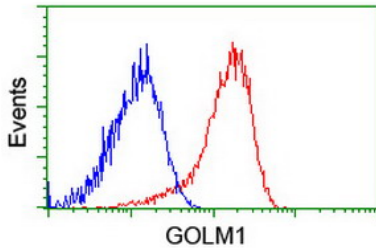
Anti-GOLPH2 (GOLM1) Mouse Monoclonal Antibody [Clone ID: OTI2D6] (M02975-1) Images



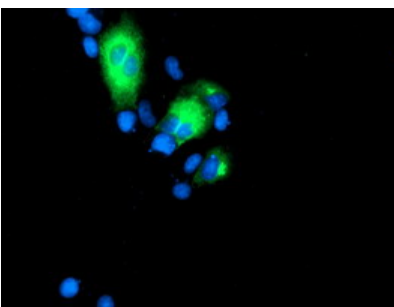
Flow cytometric Analysis of Jurkat cells



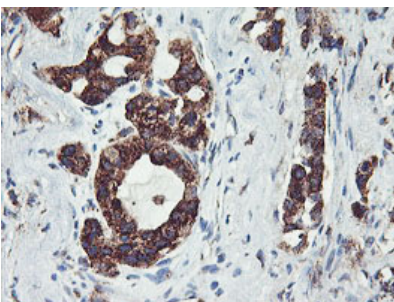
HEK293T cells transfected with either GOLM1 (Myc-DDK-tagged) overexpress plasmid (Red) or empty vector control plasmid (Blue) were immunostained by anti-GOLM1 antibody (M02975-1)



Flow cytometric Analysis of Hela cells

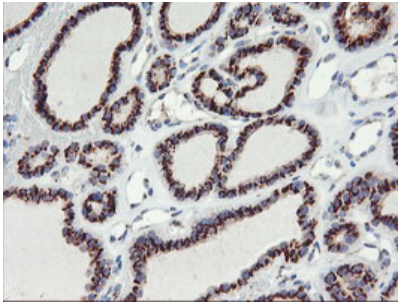


Anti-GOLM1 mouse monoclonal antibody (M02975-1) immunofluorescent staining of COS7 cells transiently transfected by pCMV6-ENTRY GOLM1.

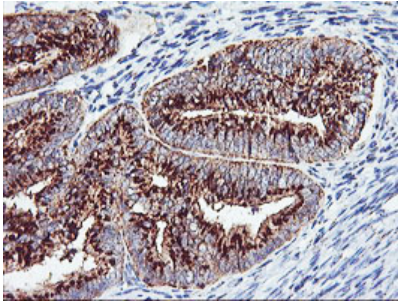


Immunohistochemical staining of paraffin-embedded Carcinoma of Human lung tissue using anti-GOLM1 mouse monoclonal antibody. (Heat-induced epitope retrieval by 10mM citric buffer)

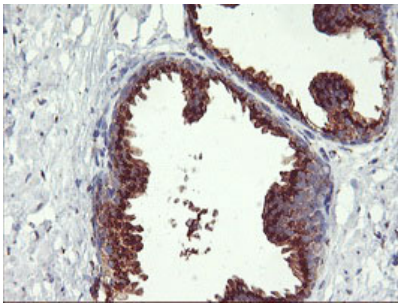
Immunohistochemical staining of paraffin-embedded



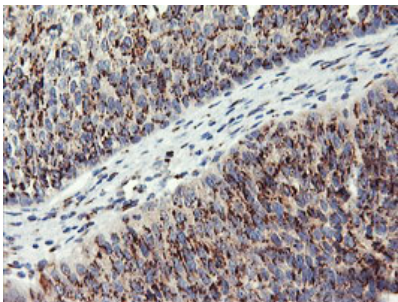
Carcinoma of Human thyroid tissue using anti-GOLM1 mouse monoclonal antibody. (Heat-induced epitope retrieval by 10mM citric buffer)



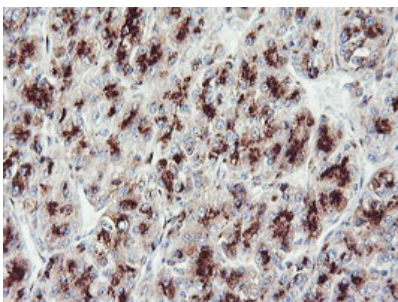
Immunohistochemical staining of paraffin-embedded Adenocarcinoma of Human endometrium tissue using anti-GOLM1 mouse monoclonal antibody. (Heat-induced epitope retrieval by 10mM citric buffer)



Immunohistochemical staining of paraffin-embedded Human prostate tissue within the normal limits using anti-GOLM1 mouse monoclonal antibody. (Heat-induced epitope retrieval by 10mM citric buffer)

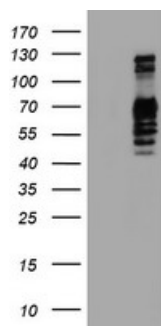


Immunohistochemical staining of paraffin-embedded Carcinoma of Human bladder tissue using anti-GOLM1 mouse monoclonal antibody. (Heat-induced epitope retrieval by 10mM citric buffer)



Immunohistochemical staining of paraffin-embedded Carcinoma of Human liver tissue using anti-GOLM1 mouse monoclonal antibody. (Heat-induced epitope retrieval by 10mM citric buffer)

HEK293T cells were transfected with the pCMV6-ENTRY control (Left lane) or pCMV6-ENTRY GOLM1 (Right lane) cDNA for 48 hrs and lysed. Equivalent amounts of cell



lysates (5 ug per lane) were separated by SDS-PAGE and immunoblotted with anti-GOLM1.

Submit a product review to [Biocompare.com](https://www.biocompare.com)

Submit a review of this product to [Biocompare.com](https://www.biocompare.com) to receive a \$20 Amazon.com giftcard! Your reviews help your fellow scientists make the right decisions. Thank you for your contribution.



Anti-GOLPH2 (GOLM1) Mouse Monoclonal Antibody [Clone ID: OT12D6]

For Research Use Only. Not for use in diagnostic procedures.