

## Anti-PLIN3 Antibody

Catalog Number: M02977

### About PLIN3

Required for the transport of mannose 6-phosphate receptors (MPR) from endosomes to the trans-Golgi network.

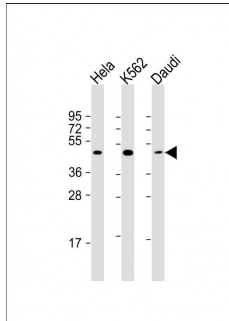
### Overview

Product Name	Anti-PLIN3 Antibody
Reactive Species	Human
Description	Boster Bio Anti-PLIN3 Antibody (Catalog # M02977). Tested in WB, Flow Cytometry application(s). This antibody reacts with Human.
Application	Flow Cytometry, WB
Clonality	Monoclonal 1651CT490.66.85
Formulation	Purified monoclonal antibody supplied in PBS with 0.09% (W/V) sodium azide.
Storage Instructions	Maintain refrigerated at 2-8°C for up to 2 weeks. For long-term storage, store at -20°C in small aliquots to prevent freeze-thaw cycles.
Host	Mouse
Uniprot ID	O60664

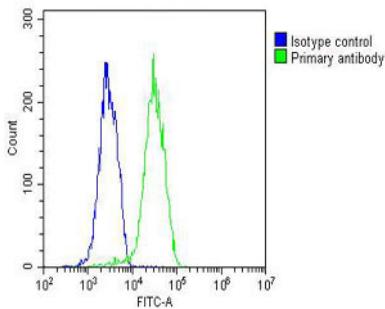
### Technical Details

Immunogen	This PLIN3 antibody is generated from a mouse immunized with a KLH conjugated synthetic peptide between 1-434 amino acids from human PLIN3.
Predicted Reactive Species	Bovine, Mouse
Isotype	IgG2a,k
Purification	This antibody is purified through a protein G column, followed by dialysis against PBS.
Suggested Dilutions	WB: 1:2000 FC: 1:25

## Anti-PLIN3 Antibody (M02977) Images



All lanes : Anti-PLIN3 Antibody at 1:2000 dilution  
Lane 1: HeLa whole cell lysate  
Lane 2: K562 whole cell lysate  
Lane 3: Daudi whole cell lysate  
Lysates/proteins at 20 µg per lane.  
Secondary Goat Anti-mouse IgG, (H+L), Peroxidase conjugated at 1/10000 dilution. Predicted band size : 47 kDa  
Blocking/Dilution buffer: 5% NFDN/TBST.



Overlay histogram showing HUVEC cells stained with M02977 (green line). The cells were fixed with 2% paraformaldehyde (10 min) and then permeabilized with 90% methanol for 10 min. The cells were then incubated in 2% bovine serum albumin to block non-specific protein-protein interactions followed by the antibody (M02977, 1:25 dilution) for 60 min at 37°C. The secondary antibody used was Goat-Anti-Mouse IgG, DyLight® 488 Conjugated Highly Cross-Adsorbed at 1/200 dilution for 40 min at 37°C. Isotype control antibody (blue line) was mouse IgG1 (1µg/1x10<sup>6</sup> cells) used under the same conditions. Acquisition of >10,000 events was performed.

## Submit a product review to Biocompare.com

Submit a review of this product to Biocompare.com to receive a \$20 Amazon.com giftcard! Your reviews help your fellow scientists make the right decisions. Thank you for your contribution.



Anti-PLIN3 Antibody

For Research Use Only. Not for use in diagnostic procedures.