

Anti-Rt PLSCR1 Ascites Monoclonal Antibody

Catalog Number: M02995

About PLSCR1

PLSCR1 (phospholipid scramblase 1) is a multiply palmitoylated endofacial plasma membrane protein containing several SH3 and WW domain binding motives. In the plasma membrane, PLSCR1 plays a role in transbilayer lipid redistributions and signal transduction. Nonpalmitoylated PLSCR1, however, is able to be transported into the nucleus and bind DNA. PLSCR1 potentiates the antiviral activity of interferon and its expression is highly induced by interferons and growth factors.

Overview

Product Name	Anti-Rt PLSCR1 Ascites Monoclonal Antibody
Reactive Species	Rat
Description	Boster Bio Anti-Rt PLSCR1 Ascites Monoclonal Antibody (Catalog# M02995). Tested in IP, WB, ICC, Flow Cytometry application(s). This antibody reacts with Rat.
Application	Flow Cytometry, IP, ICC, WB
Clonality	Monoclonal 13A6 [TEC-23]
Formulation	Stabilized with 15mM sodium azide.
Storage Instructions	Store at 2-8°C. Do not freeze.
Host	Mouse
Uniprot ID	P58195

Technical Details

Immunogen	Pooled lipid raft fraction isolated from RBL-2H3 cells. The antibody 13A6 [TEC-23] binds to an intracellular epitope of rat Phospholipid Scramblase 1 (PLSCR1), an 37-49 kDa protein, accelerating bidirectional movement of plasma membrane phospholipids under conditions of elevated calcium.
Predicted Reactive Species	Primate
Isotype	Mouse IgG2a
Form	Liquid
Concentration	1.0 mg/mL by UV absorbance at 280 nm
Purification	Purified by protein-A affinity chromatography.
Suggested Dilutions	Dilute the sample so that the expected range of concentrations fall within the detection range of this kit. If the expected range of concentration is unknown, a pilot test should be conducted to decide the

optimal dilution ratio for your samples.

Some PubMed article(s) citing the expression level of this target are as follows:

Boster Bio's internal QC testing used:

Western blotting: 1 ug/ml, positive control: RBL (rat basophilic leukemia) cell line; both reducing and non-reducing conditions.

Flow cytometry: Intracellular staining.

Anti-Rt PLSCR1 Ascites Monoclonal Antibody (M02995) Images

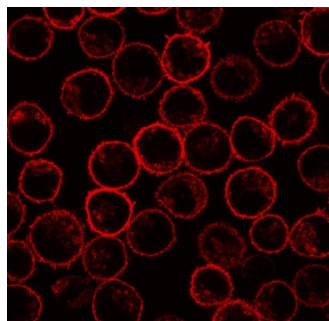


Figure 2. Immunocytochemistry staining of Plscr1 using Anti-Rt PLSCR1 Ascites Monoclonal Antibody (M02995).

Immunofluorescence staining of PLSCR1 in rat basophilic leukemia (RBL) cell line using 13A6 (Tec-23) antibody.

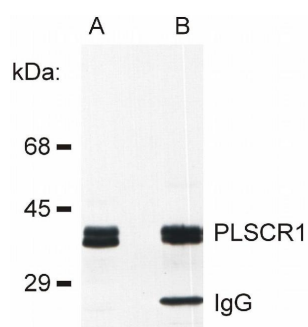


Figure 1. IP validation of Plscr1 using Anti-Rt PLSCR1 Ascites Monoclonal Antibody (M02995).

Detection of PLSCR1 in rat basophilic leukemia (RBL) cell line lysate (A) and in PLSCR1 immunoprecipitate from RBL lysate (B). The antibody 13A6 (Tec-23) was used both for immunoprecipitation and immunodetection.

Submit a product review to Biocompare.com

Submit a review of this product to Biocompare.com to receive a \$20 Amazon.com giftcard! Your reviews help your fellow scientists make the right decisions. Thank you for your contribution.



Anti-Rt PLSCR1 Ascites Monoclonal Antibody