

Anti-Ephrin type-A receptor 1 EphA1 Monoclonal Antibody

Catalog Number: M03024

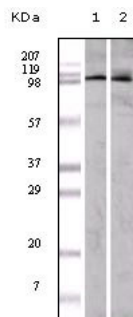
Overview

| | |
|----------------------|--|
| Product Name | Anti-Ephrin type-A receptor 1 EphA1 Monoclonal Antibody |
| Reactive Species | Human |
| Description | Boster Bio Anti-Ephrin type-A receptor 1 EphA1 Monoclonal Antibody catalog # M03024. Tested in ELISA, IHC, WB applications. This antibody reacts with Human. |
| Application | ELISA, IF, IHC, WB |
| Clonality | Monoclonal 5D2 |
| Formulation | Purified antibody in PBS containing 0.03% sodium azide. |
| Storage Instructions | Store at -20°C for one year. For short term storage and frequent use, store at 4°C for up to one month. Avoid repeated freeze-thaw cycles. |
| Host | Mouse |
| Uniprot ID | P21709 |

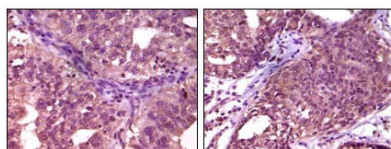
Technical Details

| | |
|---------------------|---|
| Immunogen | Purified recombinant fragment of EphA1 expressed in E. Coli. |
| Cross Reactivity | No cross reactivity with other proteins. |
| Isotype | IgG |
| Form | Liquid |
| Concentration | 1 mg/ml |
| Purification | Affinity purification |
| Suggested Dilutions | WB 1:500-1:2000 IHC 1:200-1:1000 ELISA 1:10000 IF 1:50-200 |

Anti-Ephrin type-A receptor 1 EphA1 Monoclonal Antibody (M03024) Images



Western Blot analysis using EphA1 Monoclonal Antibody against A549 (1) and HeLa (2) cell lysate.



Immunohistochemistry analysis of paraffin-embedded human ovary carcinoma (left) and breast carcinoma (right), showing cytoplasmic localization with DAB staining using EphA1 Monoclonal Antibody.

Submit a product review to [Biocompare.com](https://www.biocompare.com)

Submit a review of this product to [Biocompare.com](https://www.biocompare.com) to receive a \$20 Amazon.com giftcard! Your reviews help your fellow scientists make the right decisions. Thank you for your contribution.



Anti-Ephrin type-A receptor 1 EphA1 Monoclonal Antibody
For Research Use Only. Not for use in diagnostic procedures.