

Anti-MSMB Mouse Monoclonal Antibody [Clone ID: OTI6C7]

Catalog Number: M03041-1

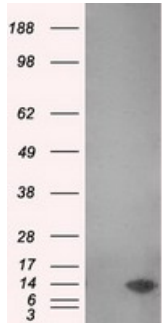
Overview

Product Name	Anti-MSMB Mouse Monoclonal Antibody [Clone ID: OTI6C7]
Reactive Species	Human
Description	Boster Bio Anti-MSMB mouse monoclonal antibody, clone OTI6C7 (formerly 6C7). Catalog# M03041-1. Tested in IF, WB. This antibody reacts with Human.
Application	IF, WB
Clonality	Monoclonal OTI6C7
Formulation	PBS (pH 7.3) containing 1% stabilizing protein, 50% glycerol and 0.02% sodium azide. This antibody is supplied in a stabilized formulation. Compatibility with conjugation reactions depends on the chemistry of the conjugation method used. For conjugation methods that are not compatible with the stabilizing components present in this formulation, a carrier-free antibody format is required.
Storage Instructions	Store at -20°C as received.
Host	Mouse
Uniprot ID	P08118

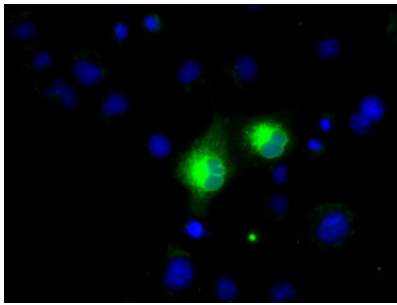
Technical Details

Immunogen	Full length human recombinant protein of human MSMB (NP_002434) produced in HEK293T cell.
Isotype	IgG1
Concentration	0.9 mg/ml
Purification	Purified from mouse ascites fluids or tissue culture supernatant by affinity chromatography (protein A/G)
Suggested Dilutions	WB: 1:2000 IF: 1:100

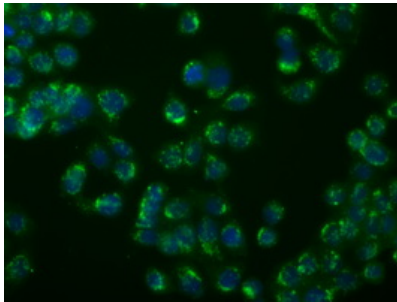
Anti-MSMB Mouse Monoclonal Antibody [Clone ID: OTI6C7] (M03041-1) Images



HEK293T cells were transfected with the pCMV6-ENTRY control (Left lane) or pCMV6-ENTRY MSMB (Right lane) cDNA for 48 hrs and lysed. Equivalent amounts of cell lysates (5 ug per lane) were separated by SDS-PAGE and immunoblotted with anti-MSMB.



Anti-MSMB mouse monoclonal antibody (M03041-1) immunofluorescent staining of COS7 cells transiently transfected by pCMV6-ENTRY MSMB.



Immunofluorescent staining of HeLa cells using anti-mouse monoclonal antibody ().

Submit a product review to Biocompare.com

Submit a review of this product to Biocompare.com to receive a \$20 Amazon.com giftcard! Your reviews help your fellow scientists make the right decisions. Thank you for your contribution.



Anti-MSMB Mouse Monoclonal Antibody [Clone ID: OTI6C7]

For Research Use Only. Not for use in diagnostic procedures.