

Anti-MSMB Mouse Monoclonal Antibody [Clone ID: OTI20F2]

Catalog Number: M03041-2

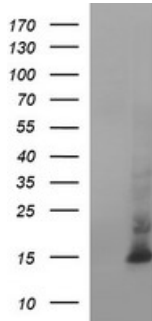
Overview

Product Name	Anti-MSMB Mouse Monoclonal Antibody [Clone ID: OTI20F2]
Reactive Species	Human
Description	Boster Bio MSMB mouse monoclonal antibody, clone OTI20F2 (formerly 20F2). Catalog# M03041-2. Tested in ELISA, IHC, WB. This antibody reacts with Human.
Application	ELISA, IHC, WB
Clonality	Monoclonal OTI20F2
Formulation	PBS (pH 7.3) containing 1% stabilizing protein, 50% glycerol and 0.02% sodium azide. This antibody is supplied in a stabilized formulation. Compatibility with conjugation reactions depends on the chemistry of the conjugation method used. For conjugation methods that are not compatible with the stabilizing components present in this formulation, a carrier-free antibody format is required.
Storage Instructions	Store at -20°C as received.
Host	Mouse
Uniprot ID	P08118

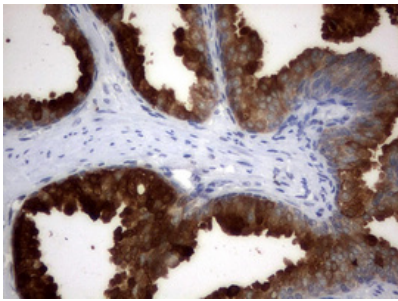
Technical Details

Immunogen	Purified prostate specific antigen (MSMB) from human seminal fluid
Isotype	IgG2b
Concentration	1 mg/ml
Purification	Purified from mouse ascites fluids or tissue culture supernatant by affinity chromatography (protein A/G)
Suggested Dilutions	WB 1:1000

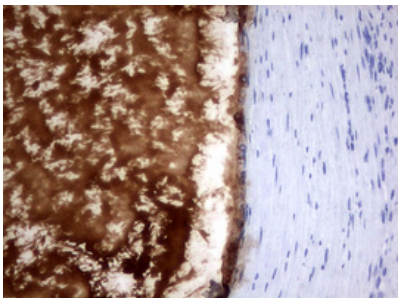
Anti-MSMB Mouse Monoclonal Antibody [Clone ID: OTI20F2] (M03041-2) Images



HEK293T cells were transfected with the pCMV6-ENTRY control (Left lane) or pCMV6-ENTRY MSMB (Right lane) cDNA for 48 hrs and lysed. Equivalent amounts of cell lysates (5 ug per lane) were separated by SDS-PAGE and immunoblotted with anti-MSMB.



Immunohistochemical staining of paraffin-embedded Human prostate tissue within the normal limits using anti-MSMB mouse monoclonal antibody. (M03041-2) Dilution: 1:150



Immunohistochemical staining of paraffin-embedded Carcinoma of Human prostate tissue using anti-MSMB mouse monoclonal antibody. (M03041-2) Dilution: 1:150

Submit a product review to [Biocompare.com](https://www.biocompare.com)

Submit a review of this product to [Biocompare.com](https://www.biocompare.com) to receive a \$20 Amazon.com giftcard! Your reviews help your fellow scientists make the right decisions. Thank you for your contribution.



Anti-MSMB Mouse Monoclonal Antibody [Clone ID: OTI20F2]

For Research Use Only. Not for use in diagnostic procedures.