

## Anti-PIM2 Mouse Monoclonal Antibody [Clone ID: OTI8G10]

Catalog Number: M03053

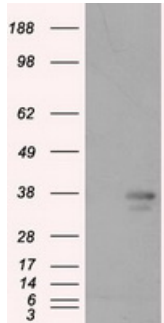
### Overview

Product Name	Anti-PIM2 Mouse Monoclonal Antibody [Clone ID: OTI8G10]
Reactive Species	Human, Mouse, Rat
Description	Boster Bio Anti-PIM2 mouse monoclonal antibody, clone OTI8G10 (formerly 8G10). Catalog# M03053. Tested in IF, IHC, IP, WB. This antibody reacts with Human, Mouse, Rat.
Application	IP, IF, IHC, WB
Clonality	Monoclonal OTI8G10
Formulation	PBS (pH 7.3) containing 1% stabilizing protein, 50% glycerol and 0.02% sodium azide. This antibody is supplied in a stabilized formulation. Compatibility with conjugation reactions depends on the chemistry of the conjugation method used. For conjugation methods that are not compatible with the stabilizing components present in this formulation, a carrier-free antibody format is required.
Storage Instructions	Store at -20°C as received.
Host	Mouse
Uniprot ID	Q9P1W9

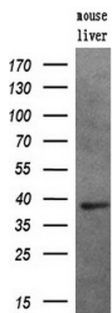
### Technical Details

Immunogen	Full length human recombinant protein of human PIM2 (NP_006866) produced in HEK293T cell.
Isotype	IgG2b
Concentration	0.81 mg/ml
Purification	Purified from mouse ascites fluids or tissue culture supernatant by affinity chromatography (protein A/G)
Suggested Dilutions	WB: 1:2000 IHC: 1:50 IF: 1:100

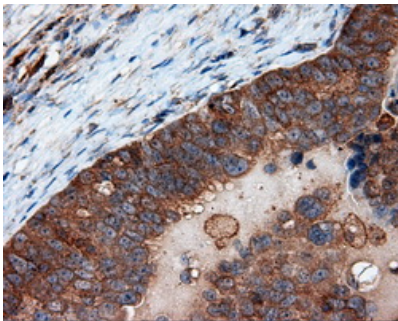
## Anti-PIM2 Mouse Monoclonal Antibody [Clone ID: OTI8G10] (M03053) Images



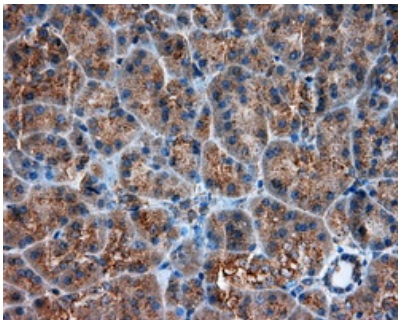
HEK293T cells were transfected with the pCMV6-ENTRY control (Left lane) or pCMV6-ENTRY PIM2 (Right lane) cDNA for 48 hrs and lysed. Equivalent amounts of cell lysates (5 ug per lane) were separated by SDS-PAGE and immunoblotted with anti-PIM2.



Western blot analysis of extracts (10ug) from a mouse tissue by using anti-PIM2 monoclonal antibody (1:200).

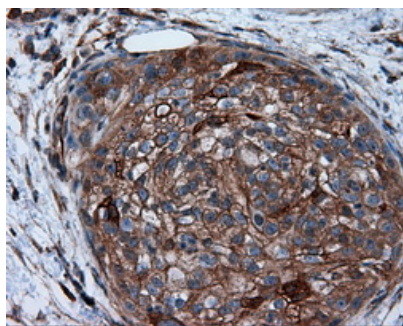


Immunohistochemical staining of paraffin-embedded Adenocarcinoma of ovary tissue using anti-PIM2 mouse monoclonal antibody. (Heat-induced epitope retrieval by 10mM citric buffer)

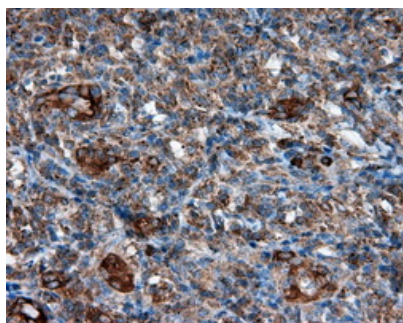


Immunohistochemical staining of paraffin-embedded pancreas tissue within the normal limits using anti-PIM2 mouse monoclonal antibody. (Heat-induced epitope retrieval by 10mM citric buffer)

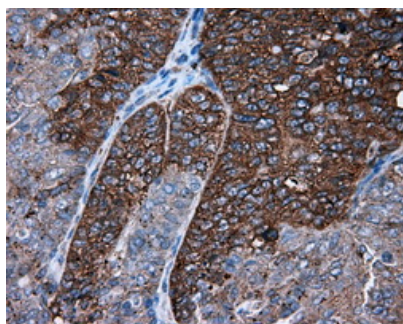
Immunohistochemical staining of paraffin-embedded Carcinoma of pancreas tissue using anti-PIM2 mouse monoclonal antibody. (Heat-induced epitope retrieval by 10mM citric buffer)



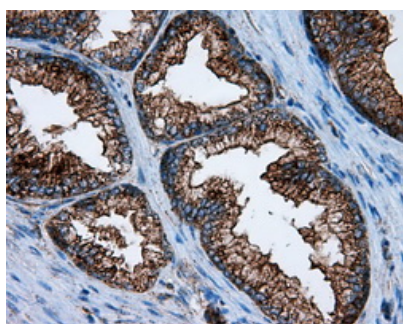
Immunohistochemical staining of paraffin-embedded Carcinoma of thyroid tissue using anti-PIM2 mouse monoclonal antibody. (Heat-induced epitope retrieval by 10mM citric buffer)



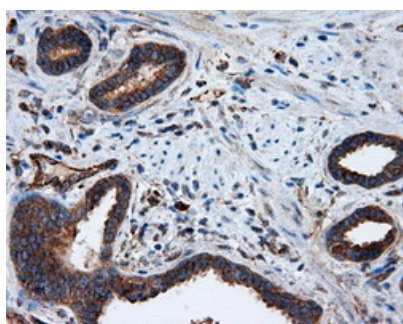
Immunohistochemical staining of paraffin-embedded Adenocarcinoma of endometrium tissue using anti-PIM2 mouse monoclonal antibody. (Heat-induced epitope retrieval by 10mM citric buffer)

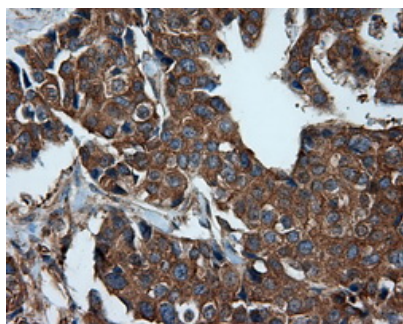


Immunohistochemical staining of paraffin-embedded prostate tissue within the normal limits using anti-PIM2 mouse monoclonal antibody. (Heat-induced epitope retrieval by 10mM citric buffer)

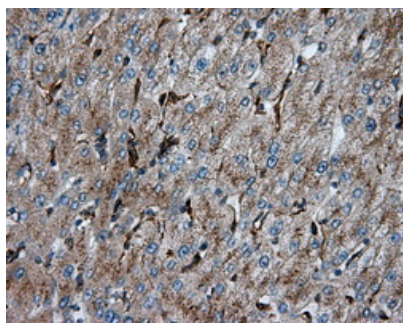


Immunohistochemical staining of paraffin-embedded Carcinoma of prostate tissue using anti-PIM2 mouse monoclonal antibody. (Heat-induced epitope retrieval by 10mM citric buffer)

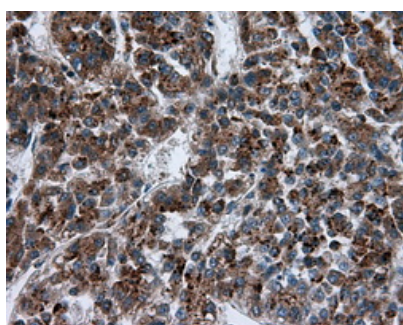




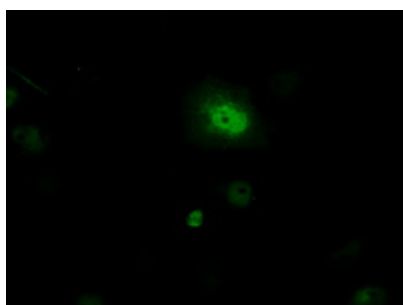
Immunohistochemical staining of paraffin-embedded Adenocarcinoma of breast tissue using anti-PIM2 mouse monoclonal antibody. (Heat-induced epitope retrieval by 10mM citric buffer)



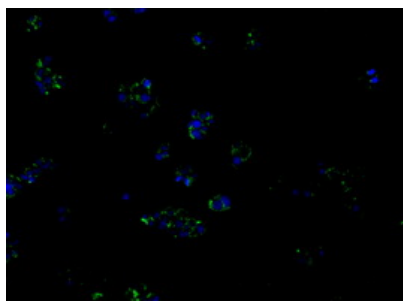
Immunohistochemical staining of paraffin-embedded liver tissue within the normal limits using anti-PIM2 mouse monoclonal antibody. (Heat-induced epitope retrieval by 10mM citric buffer)



Immunohistochemical staining of paraffin-embedded Carcinoma of liver tissue using anti-PIM2 mouse monoclonal antibody. (Heat-induced epitope retrieval by 10mM citric buffer)



Anti-PIM2 mouse monoclonal antibody (M03053) immunofluorescent staining of COS7 cells transiently transfected by pCMV6-ENTRY PIM2.



Immunofluorescent staining of HepG2 cells using anti-PIM2 mouse monoclonal antibody (M03053).

Submit a review of this product to Biocompare.com to receive a \$20 Amazon.com giftcard! Your reviews help your fellow scientists make the right decisions. Thank you for your contribution.



Anti-PIM2 Mouse Monoclonal Antibody [Clone ID: OT18G10]

For Research Use Only. Not for use in diagnostic procedures.