

## Anti-PIM2 Mouse Monoclonal Antibody [Clone ID: OTI5D5]

Catalog Number: M03053-1

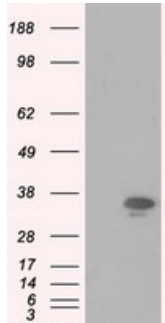
### Overview

Product Name	Anti-PIM2 Mouse Monoclonal Antibody [Clone ID: OTI5D5]
Reactive Species	Human, Mouse, Rat
Description	Boster Bio Anti-PIM2 mouse monoclonal antibody, clone OTI5D5 (formerly 5D5). Catalog# M03053-1. Tested in FC, IF, IHC, IP, WB. This antibody reacts with Human, Mouse, Rat.
Application	Flow Cytometry, IP, IF, IHC, WB
Clonality	Monoclonal OTI5D5
Formulation	PBS (pH 7.3) containing 1% stabilizing protein, 50% glycerol and 0.02% sodium azide. This antibody is supplied in a stabilized formulation. Compatibility with conjugation reactions depends on the chemistry of the conjugation method used. For conjugation methods that are not compatible with the stabilizing components present in this formulation, a carrier-free antibody format is required.
Storage Instructions	Store at -20°C as received.
Host	Mouse
Uniprot ID	Q9P1W9

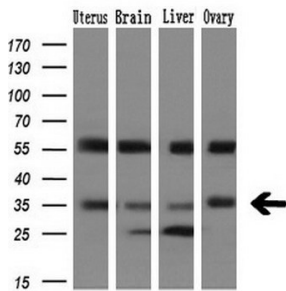
### Technical Details

Immunogen	Full length human recombinant protein of human PIM2 (NP_006866) produced in HEK293T cell.
Isotype	IgG2a
Concentration	0.54 mg/ml
Purification	Purified from mouse ascites fluids or tissue culture supernatant by affinity chromatography (protein A/G)
Suggested Dilutions	WB 1:2000 IHC 1:50 IF 1:100 Flow Cytometry 1:100 IP 2ug/500ul

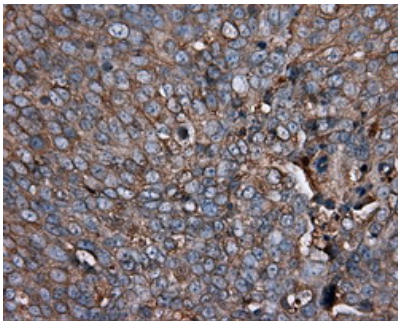
## Anti-PIM2 Mouse Monoclonal Antibody [Clone ID: OTI5D5] (M03053-1) Images



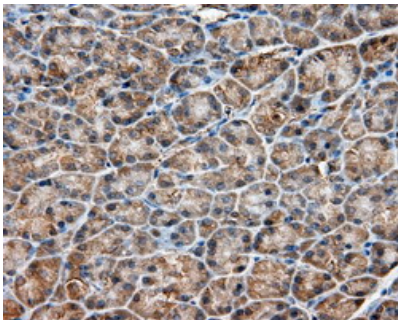
HEK293T cells were transfected with the pCMV6-ENTRY control (Left lane) or pCMV6-ENTRY PIM2 (Right lane) cDNA for 48 hrs and lysed. Equivalent amounts of cell lysates (5 ug per lane) were separated by SDS-PAGE and immunoblotted with anti-PIM2.



Western blot analysis of extracts (10ug) from 4 human tissue by using anti-PIM2 monoclonal antibody at 1:200 dilution.

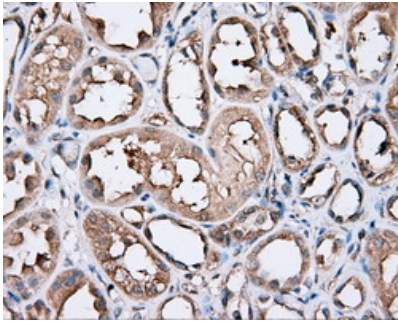
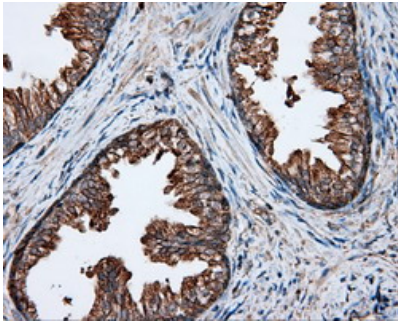


Immunohistochemical staining of paraffin-embedded Adenocarcinoma of Human ovary tissue using anti-PIM2 mouse monoclonal antibody. (Heat-induced epitope retrieval by 10mM citric buffer)

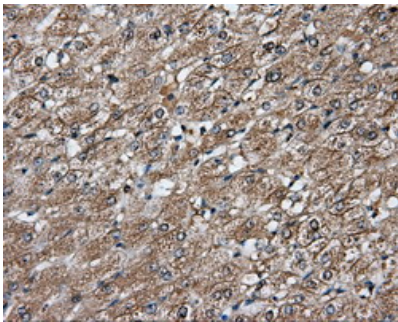


Immunohistochemical staining of paraffin-embedded Human pancreas tissue within the normal limits using anti-PIM2 mouse monoclonal antibody. (Heat-induced epitope retrieval by 10mM citric buffer)

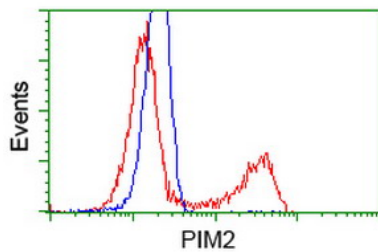
Immunohistochemical staining of paraffin-embedded Human prostate tissue within the normal limits using anti-PIM2 mouse monoclonal antibody. (Heat-induced epitope retrieval by 10mM citric buffer)



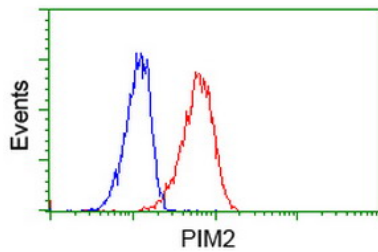
Immunohistochemical staining of paraffin-embedded Human Kidney tissue within the normal limits using anti-PIM2 mouse monoclonal antibody. (Heat-induced epitope retrieval by 10mM citric buffer)



Immunohistochemical staining of paraffin-embedded Human liver tissue within the normal limits using anti-PIM2 mouse monoclonal antibody. (Heat-induced epitope retrieval by 10mM citric buffer)

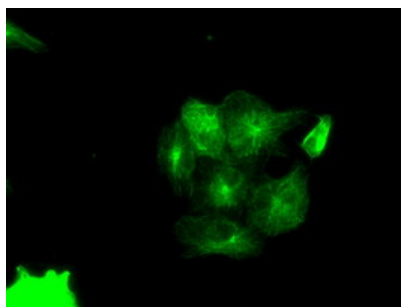


HEK293T cells transfected with either PIM2 (Myc-DDK-tagged) overexpress plasmid (Red) or empty vector control plasmid (Blue) were immunostained by anti-PIM2 antibody (M03053-1)

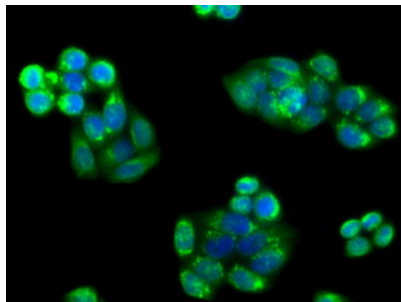


Flow cytometric Analysis of Jurkat cells

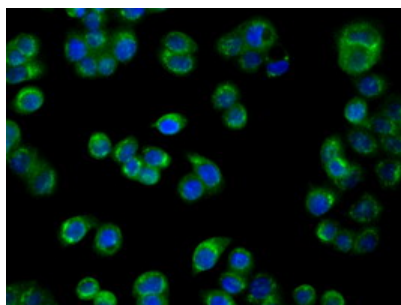
Anti-PIM2 mouse monoclonal antibody (M03053-1) immunofluorescent staining of COS7 cells transiently transfected by pCMV6-ENTRY PIM2.



Immunofluorescent staining of HeLa cells using anti-PIM2 mouse monoclonal antibody (M03053-1).



Immunofluorescent staining of HT29 cells using anti-PIM2 mouse monoclonal antibody (M03053-1).



## Submit a product review to [Biocompare.com](https://www.biocompare.com)

Submit a review of this product to [Biocompare.com](https://www.biocompare.com) to receive a \$20 Amazon.com giftcard! Your reviews help your fellow scientists make the right decisions. Thank you for your contribution.



Anti-PIM2 Mouse Monoclonal Antibody [Clone ID: OTI5D5]

For Research Use Only. Not for use in diagnostic procedures.