

## Anti-PIM2 Rabbit Monoclonal Antibody

Catalog Number: M03053-3

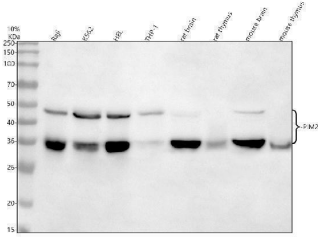
### Overview

Product Name	Anti-PIM2 Rabbit Monoclonal Antibody
Reactive Species	Human, Mouse, Rat
Description	Boster Bio Anti-PIM2 Rabbit Monoclonal Antibody catalog # M03053-3. Tested in WB, IP applications. This antibody reacts with Human, Mouse, Rat.
Application	IP, WB
Clonality	Monoclonal 26P53
Formulation	Rabbit IgG in stabilizing components, phosphate buffered saline, pH 7.4, 150mM NaCl, 0.02% sodium azide and 50% glycerol. *This antibody is supplied in a stabilized formulation. Compatibility with conjugation reactions depends on the chemistry of the conjugation method used. For conjugation methods that are not compatible with the stabilizing components present in this formulation, a carrier-free antibody format is required.
Storage Instructions	Store at -20°C for one year. For short term storage and frequent use, store at 4°C for up to one month. Avoid repeated freeze-thaw cycles.
Host	Rabbit
Uniprot ID	Q9P1W9

### Technical Details

Immunogen	A synthesized peptide derived from PIM2
Isotype	IgG
Form	Liquid
Concentration	0.5mg/ml
Purification	Affinity-chromatography
Suggested Dilutions	WB 1:500-1:2000 IP 1:50

## Anti-PIM2 Rabbit Monoclonal Antibody (M03053-3) Images



Western blot analysis of PIM2 using anti-PIM2 antibody (M03053-3). Electrophoresis was performed on a 10% SDS-PAGE gel at 80V (Stacking gel) / 120V (Resolving gel) for 2 hours. The sample well of each lane was loaded with 30 ug of sample under reducing conditions. Lane 1: human Raji whole cell lysates, Lane 2: human K562 whole cell lysates, Lane 3: human HEL whole cell lysates, Lane 4: human THP-1 whole cell lysates, Lane 5: rat brain tissue lysates, Lane 6: rat thymus tissue lysates, Lane 7: mouse brain tissue lysates, Lane 8: mouse thymus tissue lysates. After electrophoresis, proteins were transferred to a nitrocellulose membrane at 150 mA for 50-90 minutes. Blocked the membrane with 5% non-fat milk/TBS for 1.5 hour at RT. The membrane was incubated with rabbit anti-PIM2 antigen affinity purified monoclonal antibody (M03053-3) at 1:500 overnight at 4°C, then washed with TBS-0.1%Tween 3 times with 5 minutes each and probed with a goat anti-rabbit IgG-HRP secondary antibody at a dilution of 1:5000 for 1.5 hour at RT. The signal is developed using an ECL Plus Western Blotting Substrate (Catalog # AR1196-200) with Tanon 5200 system. A specific band was detected for PIM2 at approximately 34-44 kDa. The expected band size for PIM2 is at 34 kDa.

### Submit a product review to [Biocompare.com](https://www.biocompare.com)

Submit a review of this product to [Biocompare.com](https://www.biocompare.com) to receive a \$20 Amazon.com giftcard! Your reviews help your fellow scientists make the right decisions. Thank you for your contribution.



Anti-PIM2 Rabbit Monoclonal Antibody

For Research Use Only. Not for use in diagnostic procedures.