

Anti-Tin2 (TNF2) Mouse Monoclonal Antibody [Clone ID: OTI2C12]

Catalog Number: M03070

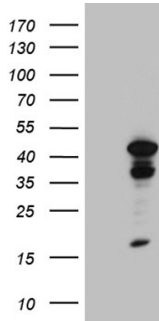
Overview

Product Name	Anti-Tin2 (TNF2) Mouse Monoclonal Antibody [Clone ID: OTI2C12]
Reactive Species	Human, Mouse, Rat
Description	Boster Bio TNF2 mouse monoclonal antibody, clone OTI2C12. Catalog# M03070. Tested in IHC, WB. This antibody reacts with Human, Mouse, Rat.
Application	IHC, WB
Clonality	Monoclonal OTI2C12
Formulation	PBS (pH 7.3) containing 1% stabilizing protein, 50% glycerol and 0.02% sodium azide. This antibody is supplied in a stabilized formulation. Compatibility with conjugation reactions depends on the chemistry of the conjugation method used. For conjugation methods that are not compatible with the stabilizing components present in this formulation, a carrier-free antibody format is required.
Storage Instructions	Store at -20°C as received.
Host	Mouse
Uniprot ID	Q9BSI4

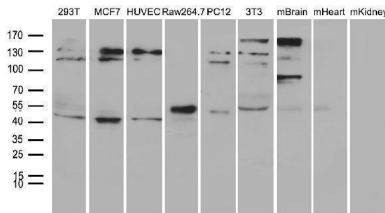
Technical Details

Immunogen	Human recombinant protein fragment corresponding to amino acids 266-347 of human TNF2 (NP_036593) produced in E.coli.
Isotype	IgG2b
Concentration	1 mg/ml
Purification	Purified from mouse ascites fluids or tissue culture supernatant by affinity chromatography (protein A/G)
Suggested Dilutions	WB: 1:500~2000 IHC: 1:2000

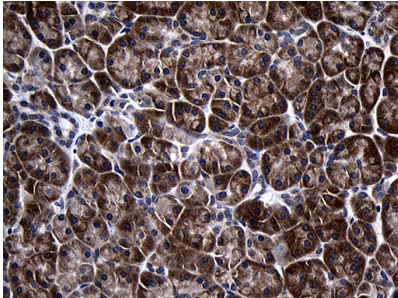
Anti-Tin2 (TINF2) Mouse Monoclonal Antibody [Clone ID: OTI2C12] (M03070) Images



HEK293T cells were transfected with the pCMV6-ENTRY control (Left lane) or pCMV6-ENTRY TINF2 (Right lane) cDNA for 48 hrs and lysed. Equivalent amounts of cell lysates (5 ug per lane) were separated by SDS-PAGE and immunoblotted with anti-TINF2 (1:2000).



Western blot analysis of extracts (35ug) from 6 different cell lines and 3 different tissue lines by using anti-TINF2 monoclonal antibody (1:500).



Immunohistochemical staining of paraffin-embedded Human pancreas tissue within the normal limits using anti-TINF2 mouse monoclonal antibody. (Heat-induced epitope retrieval by 1mM EDTA in 10mM Tris buffer (pH8.5) at 120°C for 3min)

Submit a product review to [Biocompare.com](https://www.biocompare.com)

Submit a review of this product to [Biocompare.com](https://www.biocompare.com) to receive a \$20 Amazon.com giftcard! Your reviews help your fellow scientists make the right decisions. Thank you for your contribution.



Anti-Tin2 (TINF2) Mouse Monoclonal Antibody [Clone ID: OTI2C12]

For Research Use Only. Not for use in diagnostic procedures.