

Anti-XPB (ERCC3) Mouse Monoclonal Antibody [Clone ID: OTI6H8]

Catalog Number: M03103-1

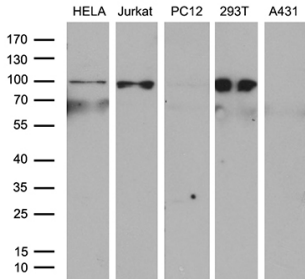
Overview

Product Name	Anti-XPB (ERCC3) Mouse Monoclonal Antibody [Clone ID: OTI6H8]
Reactive Species	Human, Mouse, Rat
Description	Boster Bio ERCC3 mouse monoclonal antibody, clone OTI6H8. Catalog# M03103-1. Tested in IHC, WB. This antibody reacts with Human, Mouse, Rat.
Application	IHC, WB
Clonality	Monoclonal OTI6H8
Formulation	PBS (pH 7.3) containing 1% stabilizing protein, 50% glycerol and 0.02% sodium azide. This antibody is supplied in a stabilized formulation. Compatibility with conjugation reactions depends on the chemistry of the conjugation method used. For conjugation methods that are not compatible with the stabilizing components present in this formulation, a carrier-free antibody format is required.
Storage Instructions	Store at -20°C as received.
Host	Mouse
Uniprot ID	P19447

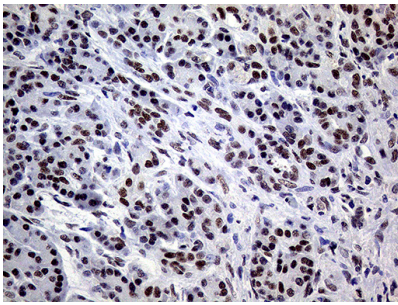
Technical Details

Immunogen	Human recombinant protein fragment corresponding to amino acids 191-436 of human ERCC3 (NP_000113) produced in E.coli.
Isotype	IgG1
Concentration	1 mg/ml
Purification	Purified from mouse ascites fluids or tissue culture supernatant by affinity chromatography (protein A/G)
Suggested Dilutions	WB 1:500 IHC 1:1000

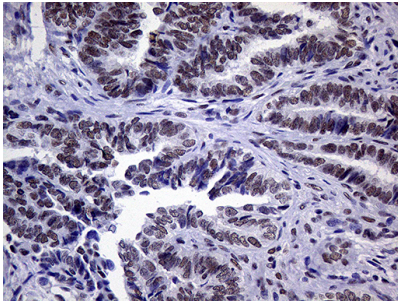
Anti-XPB (ERCC3) Mouse Monoclonal Antibody [Clone ID: OTI6H8] (M03103-1) Images



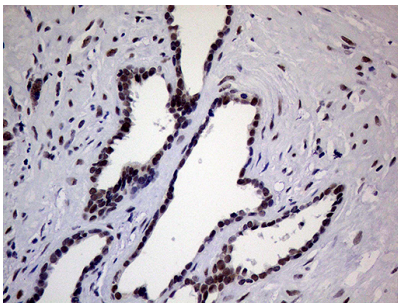
Western blot analysis of extracts (35ug) from 5 different cell lines by using anti-ERCC3 monoclonal antibody (1:500).



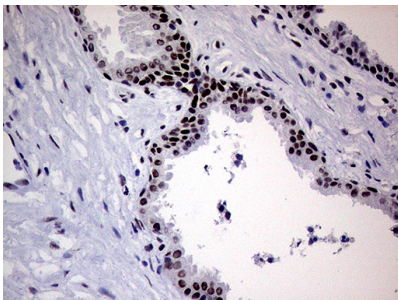
Immunohistochemical staining of paraffin-embedded Human pancreas tissue within the normal limits using anti-ERCC3 mouse monoclonal antibody. (Heat-induced epitope retrieval by 1mM EDTA in 10mM Tris buffer (pH8.5) at 120°C for 3min)



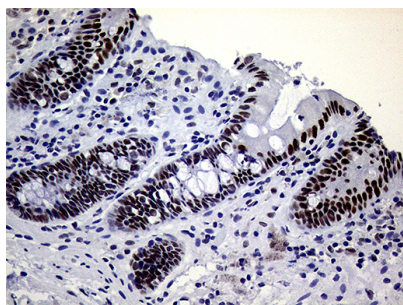
Immunohistochemical staining of paraffin-embedded Adenocarcinoma of Human endometrium tissue using anti-ERCC3 mouse monoclonal antibody. (Heat-induced epitope retrieval by 1mM EDTA in 10mM Tris buffer (pH8.5) at 120°C for 3min)



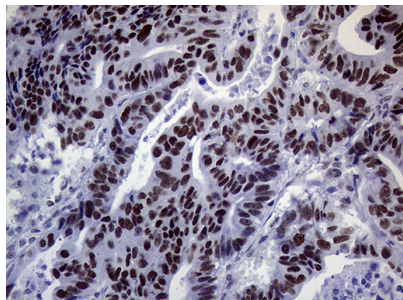
Immunohistochemical staining of paraffin-embedded Human prostate tissue within the normal limits using anti-ERCC3 mouse monoclonal antibody. (Heat-induced epitope retrieval by 1mM EDTA in 10mM Tris buffer (pH8.5) at 120°C for 3min)



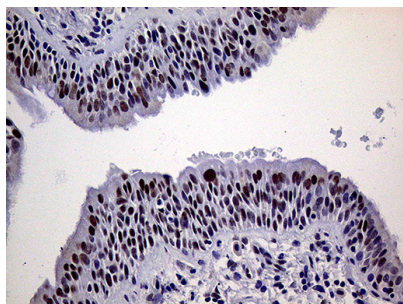
Immunohistochemical staining of paraffin-embedded Carcinoma of Human prostate tissue using anti-ERCC3 mouse monoclonal antibody. (Heat-induced epitope retrieval by 1mM EDTA in 10mM Tris buffer (pH8.5) at 120°C for 3min)



Immunohistochemical staining of paraffin-embedded Human colon tissue within the normal limits using anti-ERCC3 mouse monoclonal antibody. (Heat-induced epitope retrieval by 1mM EDTA in 10mM Tris buffer (pH8.5) at 120Å°C for 3min)



Immunohistochemical staining of paraffin-embedded Adenocarcinoma of Human colon tissue using anti-ERCC3 mouse monoclonal antibody. (Heat-induced epitope retrieval by 1mM EDTA in 10mM Tris buffer (pH8.5) at 120Å°C for 3min)



Immunohistochemical staining of paraffin-embedded Human lung tissue within the normal limits using anti-ERCC3 mouse monoclonal antibody. (Heat-induced epitope retrieval by 1mM EDTA in 10mM Tris buffer (pH8.5) at 120Å°C for 3min)

Submit a product review to Biocompare.com

Submit a review of this product to Biocompare.com to receive a \$20 Amazon.com giftcard! Your reviews help your fellow scientists make the right decisions. Thank you for your contribution.



Anti-XPB (ERCC3) Mouse Monoclonal Antibody [Clone ID: OT16H8]

For Research Use Only. Not for use in diagnostic procedures.