

## Anti-IL1 Receptor II (IL1R2) Mouse Monoclonal Antibody [Clone ID: OTI3C6]

Catalog Number: M03106

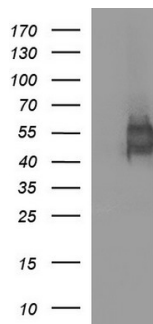
### Overview

Product Name	Anti-IL1 Receptor II (IL1R2) Mouse Monoclonal Antibody [Clone ID: OTI3C6]
Reactive Species	Human
Description	Boster Bio IL1R2 mouse monoclonal antibody, clone OTI3C6 (formerly 3C6). Catalog# M03106. Tested in WB. This antibody reacts with Human.
Application	WB
Clonality	Monoclonal OTI3C6
Formulation	PBS (pH 7.3) containing 1% stabilizing protein, 50% glycerol and 0.02% sodium azide. This antibody is supplied in a stabilized formulation. Compatibility with conjugation reactions depends on the chemistry of the conjugation method used. For conjugation methods that are not compatible with the stabilizing components present in this formulation, a carrier-free antibody format is required.
Storage Instructions	Store at -20°C as received.
Host	Mouse
Uniprot ID	P27930

### Technical Details

Immunogen	Full length human recombinant protein of human IL1R2 (NP_004624) produced in HEK293T cell.
Isotype	IgG1
Concentration	1 mg/ml
Purification	Purified from mouse ascites fluids or tissue culture supernatant by affinity chromatography (protein A/G)
Suggested Dilutions	WB: 1:1000

## Anti-IL1 Receptor II (IL1R2) Mouse Monoclonal Antibody [Clone ID: OTI3C6] (M03106) Images



HEK293T cells were transfected with the pCMV6-ENTRY control (Left lane) or pCMV6-ENTRY IL1R2 (Right lane) cDNA for 48 hrs and lysed. Equivalent amounts of cell lysates (5 ug per lane) were separated by SDS-PAGE and immunoblotted with anti-IL1R2.

### Submit a product review to Biocompare.com

Submit a review of this product to Biocompare.com to receive a \$20 Amazon.com giftcard! Your reviews help your fellow scientists make the right decisions. Thank you for your contribution.



Anti-IL1 Receptor II (IL1R2) Mouse Monoclonal Antibody [Clone ID: OTI3C6]

For Research Use Only. Not for use in diagnostic procedures.