

## Anti-Clathrin Heavy Chain Purified CLTC Monoclonal Antibody

Catalog Number: M03134-1

### About CTLC

Clathrin is a submembrane protein that polymerizes into coat-like lattices, which results in membrane invagination. The basic oligomers are composed of three clathrin heavy chain (180 kDa) and three light chain (30 kDa) subunits and the process of polymerization is dynamically regulated by the light chains. Interaction of clathrin with the plasma membrane is mediated by adaptor proteins (AP1-4) specific for different cellular compartments. Another proteins, such as endophilin, epsin and amphiphysin are involved in membrane invagination and clathrin rearrangements. Finally, dynamin functions at the fission stage of clathrin-mediated endocytosis.

### Overview

Product Name	Anti-Clathrin Heavy Chain Purified CLTC Monoclonal Antibody
Reactive Species	Cow, Human, Mouse, Pig, Rat
Description	Boster Bio Anti-Clathrin Heavy Chain Purified CLTC Monoclonal Antibody (Catalog# M03134-1). Tested in Flow Cytometry, IP, WB, ICC, ELISA application(s). This antibody reacts with Rat, Cow, Mouse, Human, Pig.
Application	ELISA, Flow Cytometry, IP, ICC, WB
Clonality	Monoclonal BF-06
Formulation	Stabilizing Tris buffered saline (TBS), pH 8.0, 15 mM sodium azide
Storage Instructions	Store at 2-8°C. Do not freeze.
Host	Mouse
Uniprot ID	Q00610

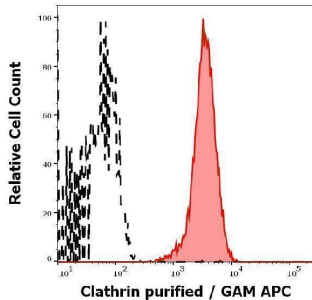
### Technical Details

Immunogen	The antibody BF-06 recognizes clathrin heavy chain, an ubiquitously expressed 180 kDa intracellular protein involved in receptor-mediated endocytosis.
Predicted Reactive Species	Primate
Cross Reactivity	This antibody does not cross-react with Thy-1.1 alloantigen.
Isotype	Mouse IgM
Form	Liquid
Concentration	1 mg/ml
Purification	Purified by sequential steps of physicochemical fractionation (differential precipitation and solid-phase chromatography methods).

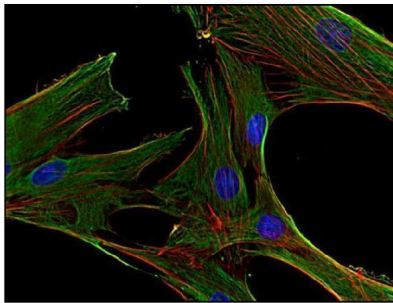
Suggested Dilutions

Flow cytometry: 2-5 ug/ml; positive control: human blood leukocytes. Intracellular staining.

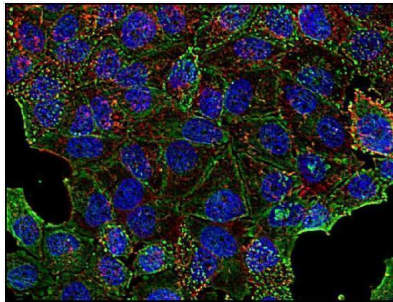
## Anti-Clathrin Heavy Chain Purified CLTC Monoclonal Antibody (M03134-1) Images



Separation of MCF-7 cells stained using anti-Clathrin (BF-06) purified antibody (concentration in sample 2 µg/ml, GAM APC, red-filled) from MCF-7 cells unstained by primary antibody (GAM APC, black-dashed) in flow cytometry analysis (intracellular staining).



Immunocytochemistry staining of clathrin in human primary fibroblasts using anti-clathrin (BF-06; green). Actin cytoskeleton decorated by phalloidin (red) and cell nuclei stained with DAPI (blue).



Immunocytochemistry staining of clathrin in human HeLa cell line using anti-clathrin (BF-06; green). Actin cytoskeleton decorated by phalloidin (red) and cell nuclei stained with DAPI (blue).

### Submit a product review to [Biocompare.com](https://www.biocompare.com)

Submit a review of this product to [Biocompare.com](https://www.biocompare.com) to receive a \$20 Amazon.com giftcard! Your reviews help your fellow scientists make the right decisions. Thank you for your contribution.



Anti-Clathrin Heavy Chain Purified CLTC Monoclonal Antibody

For Research Use Only. Not for use in diagnostic procedures.