

## Anti-Clathrin Heavy Chain / CHC Reference Antibody (Academia Sinica patent anti-Clathrin Heavy Chain)

Catalog Number: M03134-3

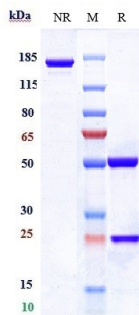
### Overview

Product Name	Anti-Clathrin Heavy Chain / CHC Reference Antibody (Academia Sinica patent anti-Clathrin Heavy Chain)
Reactive Species	Human
Description	Boster Bio Anti-Clathrin Heavy Chain / CHC Reference Antibody (Academia Sinica patent anti-Clathrin Heavy Chain (Catalog # M03134-3). Tested in Flow Cytometry, ELISA, FTA. This antibody reacts with Human. Endotoxin: < 0.1018EU/ug, determined by LAL method. Expression system: CHO Cell
Application	ELISA, Flow Cytometry, Functional Assay, Kinetics
Clonality	Monoclonal
Formulation	Purified monoclonal antibody supplied in PBS, pH6.0, without preservative. This antibody is purified through a protein A column.
Storage Instructions	Maintain refrigerated at 2-8°C for up to 2 weeks. For long-term storage, aliquot and store at -20°C to avoid repeated freeze-thaw cycles.
Uniprot ID	Q00610

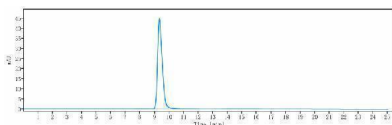
### Technical Details

Isotype	IgG1
Form	Liquid

## Anti-Clathrin Heavy Chain / CHC Reference Antibody (Academia Sinica patent anti-Clathrin Heavy Chain (M03134-3) Images



Anti-Clathrin Heavy Chain/CHC Reference Antibody (Academia Sinica patent anti-Clathrin Heavy Chain) on SDS-PAGE under reducing (R) condition. The gel was stained with Coomassie Blue. The purity of the protein is greater than 90%



The purity of Anti-Clathrin Heavy Chain/CHC Reference Antibody (Academia Sinica patent anti-Clathrin Heavy Chain) is more than 95%

### Submit a product review to Biocompare.com

Submit a review of this product to Biocompare.com to receive a \$20 Amazon.com giftcard! Your reviews help your fellow scientists make the right decisions. Thank you for your contribution.



Anti-Clathrin Heavy Chain / CHC Reference Antibody (Academia Sinica patent anti-Clathrin Heavy Chain

For Research Use Only. Not for use in diagnostic procedures.