

Anti-RhoGDI (ARHGDI) Mouse Monoclonal Antibody [Clone ID: OTI1F2]

Catalog Number: M03135

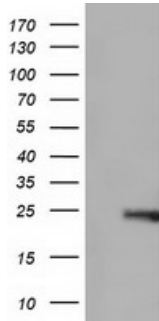
Overview

Product Name	Anti-RhoGDI (ARHGDI) Mouse Monoclonal Antibody [Clone ID: OTI1F2]
Reactive Species	Dog, Human, Monkey, Mouse, Rat
Description	Boster Bio ARHGDI (RhoGDI) mouse monoclonal antibody, clone OTI1F2 (formerly 1F2). Catalog# M03135. Tested in FC, WB. This antibody reacts with Human, Monkey, Mouse, Rat, Dog.
Application	Flow Cytometry, WB
Clonality	Monoclonal OTI1F2
Formulation	PBS (pH 7.3) containing 1% stabilizing protein, 50% glycerol and 0.02% sodium azide. This antibody is supplied in a stabilized formulation. Compatibility with conjugation reactions depends on the chemistry of the conjugation method used. For conjugation methods that are not compatible with the stabilizing components present in this formulation, a carrier-free antibody format is required.
Storage Instructions	Store at -20°C as received.
Host	Mouse
Uniprot ID	P52565

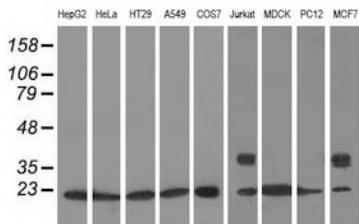
Technical Details

Immunogen	Full length human recombinant protein of human ARHGDI (NP_004300) produced in HEK293T cell.
Isotype	IgG1
Concentration	1 mg/ml
Purification	Purified from mouse ascites fluids or tissue culture supernatant by affinity chromatography (protein A/G)
Suggested Dilutions	WB 1:200~1000 Flow Cytometry 1:100

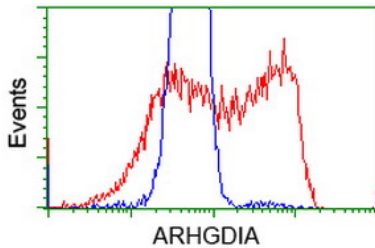
Anti-RhoGDI (ARHGDI) Mouse Monoclonal Antibody [Clone ID: OTI1F2] (M03135) Images



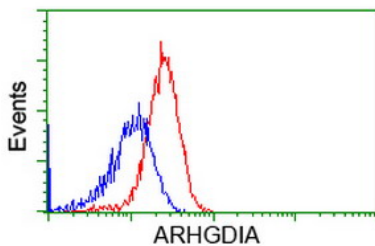
HEK293T cells were transfected with the pCMV6-ENTRY control (Left lane) or pCMV6-ENTRY ARHGDI cDNA for 48 hrs and lysed. Equivalent amounts of cell lysates (5 ug per lane) were separated by SDS-PAGE and immunoblotted with anti-ARHGDI.



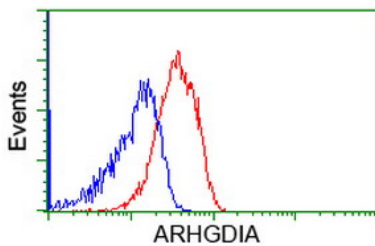
Western blot analysis of extracts (35ug) from 9 different cell lines by using anti-ARHGDI monoclonal antibody.



HEK293T cells transfected with either ARHGDI (Myc-DDK-tagged) overexpress plasmid (Red) or empty vector control plasmid (Blue) were immunostained by anti-ARHGDI antibody (M03135)

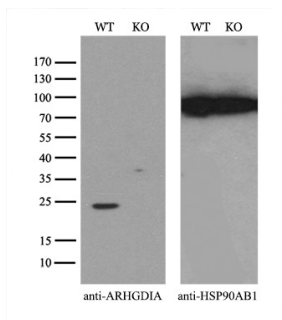


Flow cytometric Analysis of HeLa cells



Flow cytometric Analysis of Jurkat cells

Equivalent amounts of cell lysates (10 ug per lane) of wild-type 293T cells (WT) and ARHGDI-Knockout 293T cells (KO) were separated by SDS-PAGE and immunoblotted with anti-



ARHGDI monoclonal antibody M03135

Submit a product review to Biocompare.com

Submit a review of this product to Biocompare.com to receive a \$20 Amazon.com giftcard! Your reviews help your fellow scientists make the right decisions. Thank you for your contribution.



Anti-RhoGDI (ARHGDI) Mouse Monoclonal Antibody [Clone ID: OT11F2]

For Research Use Only. Not for use in diagnostic procedures.