

Anti-RhoGDI (ARHGDI) Mouse Monoclonal Antibody [Clone ID: OTI1A7]

Catalog Number: M03135-1

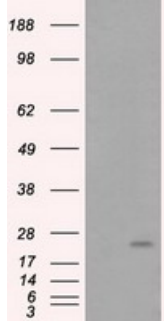
Overview

Product Name	Anti-RhoGDI (ARHGDI) Mouse Monoclonal Antibody [Clone ID: OTI1A7]
Reactive Species	Human, Mouse, Rat
Description	Boster Bio Anti-ARHGDI (RhoGDI) mouse monoclonal antibody, clone OTI1A7 (formerly 1A7). Catalog# M03135-1. Tested in IF, IHC, WB. This antibody reacts with Human, Mouse, Rat.
Application	IF, IHC, WB
Clonality	Monoclonal OTI1A7
Formulation	PBS (pH 7.3) containing 1% stabilizing protein, 50% glycerol and 0.02% sodium azide. This antibody is supplied in a stabilized formulation. Compatibility with conjugation reactions depends on the chemistry of the conjugation method used. For conjugation methods that are not compatible with the stabilizing components present in this formulation, a carrier-free antibody format is required.
Storage Instructions	Store at -20°C as received.
Host	Mouse
Uniprot ID	P52565

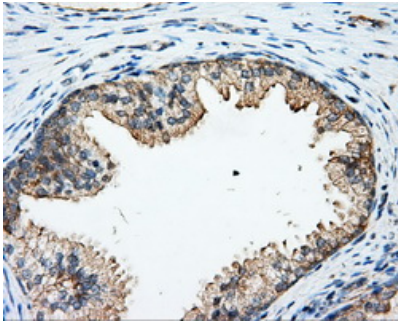
Technical Details

Immunogen	Full length human recombinant protein of human ARHGDI (NP_004300) produced in HEK293T cell.
Isotype	IgG1
Concentration	0.72 mg/ml
Purification	Purified from mouse ascites fluids or tissue culture supernatant by affinity chromatography (protein A/G)
Suggested Dilutions	WB: 1:2000 IHC: 1:50 IF: 1:100

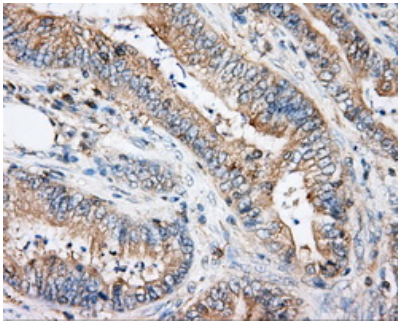
Anti-RhoGDI (ARHGDI) Mouse Monoclonal Antibody [Clone ID: OTI1A7] (M03135-1) Images



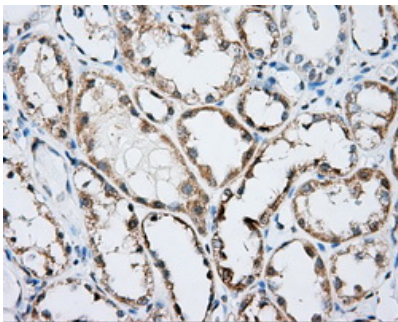
HEK293T cells were transfected with the pCMV6-ENTRY control (Left lane) or pCMV6-ENTRY ARHGDI (Right lane) cDNA for 48 hrs and lysed. Equivalent amounts of cell lysates (5 ug per lane) were separated by SDS-PAGE and immunoblotted with anti-ARHGDI.



Immunohistochemical staining of paraffin-embedded prostate tissue within the normal limits using anti-ARHGDI mouse monoclonal antibody. (Heat-induced epitope retrieval by 10mM citric buffer)

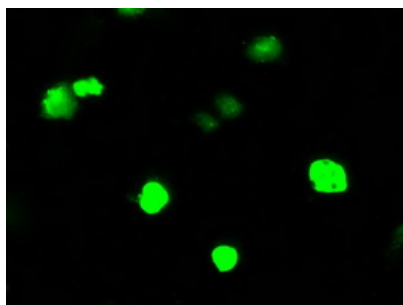


Immunohistochemical staining of paraffin-embedded Adenocarcinoma of colon tissue using anti-ARHGDI mouse monoclonal antibody. (Heat-induced epitope retrieval by 10mM citric buffer)



Immunohistochemical staining of paraffin-embedded Kidney tissue within the normal limits using anti-ARHGDI mouse monoclonal antibody. (Heat-induced epitope retrieval by 10mM citric buffer)

Anti-ARHGDI mouse monoclonal antibody (M03135-1) immunofluorescent staining of COS7 cells transiently transfected by pCMV6-ENTRY ARHGDI.



Submit a product review to Biocompare.com

Submit a review of this product to Biocompare.com to receive a \$20 Amazon.com giftcard! Your reviews help your fellow scientists make the right decisions. Thank you for your contribution.



Anti-RhoGDI (ARHGDI) Mouse Monoclonal Antibody [Clone ID: OT11A7]

For Research Use Only. Not for use in diagnostic procedures.