

## Anti-CD272 (BTLA) Mouse Monoclonal Antibody [Clone ID: OTI4D6]

Catalog Number: M03149-1

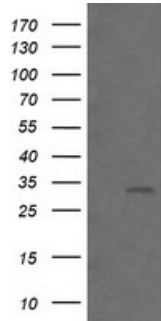
### Overview

Product Name	Anti-CD272 (BTLA) Mouse Monoclonal Antibody [Clone ID: OTI4D6]
Reactive Species	Human
Description	Boster Bio BTLA mouse monoclonal antibody, clone OTI4D6 (formerly 4D6). Catalog# M03149-1. Tested in FC, IF, IHC, WB. This antibody reacts with Human.
Application	Flow Cytometry, IF, IHC, WB
Clonality	Monoclonal OTI4D6
Formulation	PBS (PH 7.3) containing 1% BSA, 50% glycerol and 0.02% sodium azide.
Storage Instructions	Store at -20°C as received.
Host	Mouse
Uniprot ID	Q7Z6A9

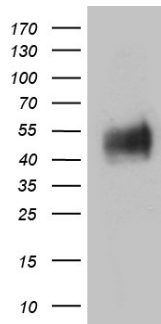
### Technical Details

Immunogen	Full length human recombinant protein of human BTLA (NP_861445) produced in HEK293T cell.
Isotype	IgG2b
Concentration	1 mg/ml
Purification	Purified from mouse ascites fluids or tissue culture supernatant by affinity chromatography (protein A/G)
Suggested Dilutions	Dilute the sample so that the expected range of concentrations fall within the detection range of this kit. If the expected range of concentration is unknown, a pilot test should be conducted to decide the optimal dilution ratio for your samples. Some PubMed article(s) citing the expression level of this target are as follows:

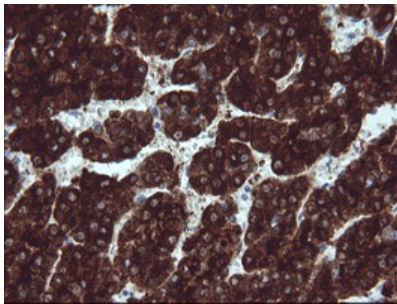
## Anti-CD272 (BTLA) Mouse Monoclonal Antibody [Clone ID: OTI4D6] (M03149-1) Images



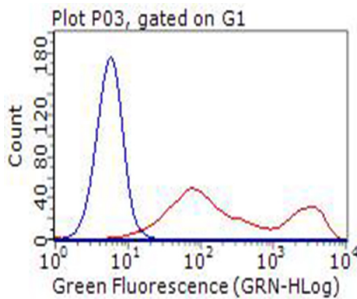
HEK293T cells were transfected with the pCMV6-ENTRY control (Left lane) or pCMV6-ENTRY BTLA (Right lane) cDNA for 48 hrs and lysed. Equivalent amounts of cell lysates (5 ug per lane) were separated by SDS-PAGE and immunoblotted with anti-BTLA.



Western blot analysis of extracts (35ug) from PBMCs by using anti-BTLA monoclonal antibody (1:500).

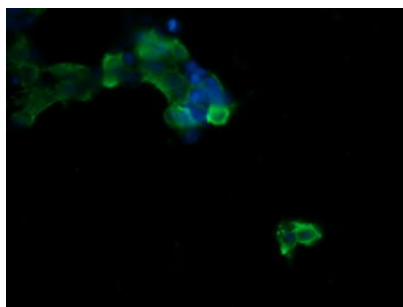


Immunohistochemical staining of paraffin-embedded Carcinoma of Human liver tissue using anti-BTLA mouse monoclonal antibody. (Heat-induced epitope retrieval by 10mM citric buffer)



HEK293T cells transfected with either BTLA (Myc-DDK-tagged) overexpress plasmid (Red) or empty vector control plasmid (Blue) were immunostained by anti-BTLA antibody (M03149-1)

Anti-BTLA mouse monoclonal antibody (M03149-1) immunofluorescent staining of COS7 cells transiently transfected by pCMV6-ENTRY BTLA.



## Submit a product review to Biocompare.com

Submit a review of this product to Biocompare.com to receive a \$20 Amazon.com giftcard! Your reviews help your fellow scientists make the right decisions. Thank you for your contribution.



Anti-CD272 (BTLA) Mouse Monoclonal Antibody [Clone ID: OTI4D6]