

Anti-TOMM40 Mouse Monoclonal Antibody [Clone ID: OTI9A3]

Catalog Number: M03166-1

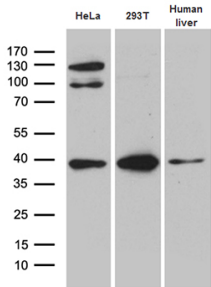
Overview

Product Name	Anti-TOMM40 Mouse Monoclonal Antibody [Clone ID: OTI9A3]
Reactive Species	Human, Mouse, Rat
Description	Boster Bio TOMM40 mouse monoclonal antibody, clone OTI9A3. Catalog# M03166-1. Tested in IHC, WB. This antibody reacts with Human, Mouse, Rat.
Application	IHC, WB
Clonality	Monoclonal OTI9A3
Formulation	PBS (pH 7.3) containing 1% stabilizing protein, 50% glycerol and 0.02% sodium azide. This antibody is supplied in a stabilized formulation. Compatibility with conjugation reactions depends on the chemistry of the conjugation method used. For conjugation methods that are not compatible with the stabilizing components present in this formulation, a carrier-free antibody format is required.
Storage Instructions	Store at -20°C as received.
Host	Mouse
Uniprot ID	O96008

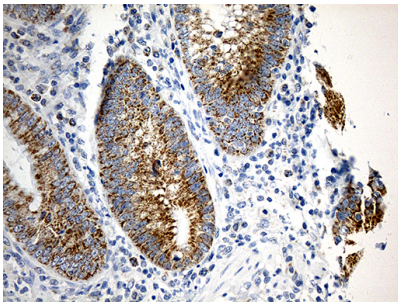
Technical Details

Immunogen	Full length human recombinant protein of human TOMM40 (NP_006105) produced in E.coli.
Isotype	IgG2b
Concentration	1 mg/ml
Purification	Purified from mouse ascites fluids or tissue culture supernatant by affinity chromatography (protein A/G)
Suggested Dilutions	WB 1:500, IHC 1:500

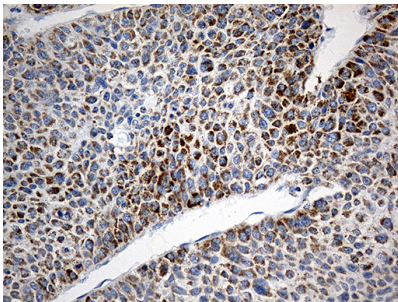
Anti-TOMM40 Mouse Monoclonal Antibody [Clone ID: OTI9A3] (M03166-1) Images



Western blot analysis of extracts (35ug) from 2 cell lines and human liver tissue lysate by using anti-TOMM40 monoclonal antibody (1:500).



Immunohistochemical staining of paraffin-embedded Human appendix tissue within the normal limits using anti-TOMM40 mouse monoclonal antibody. (Heat-induced epitope retrieval by 1mM EDTA in 10mM Tris buffer (pH8.5) at 120Å°C for 3min)



Immunohistochemical staining of paraffin-embedded Carcinoma of Human liver tissue using anti-TOMM40 mouse monoclonal antibody. (Heat-induced epitope retrieval by 1mM EDTA in 10mM Tris buffer (pH8.5) at 120Å°C for 3min)

Submit a product review to Biocompare.com

Submit a review of this product to Biocompare.com to receive a \$20 Amazon.com giftcard! Your reviews help your fellow scientists make the right decisions. Thank you for your contribution.



Anti-TOMM40 Mouse Monoclonal Antibody [Clone ID: OTI9A3]

For Research Use Only. Not for use in diagnostic procedures.