

Anti-PSMD10 Mouse Monoclonal Antibody [Clone ID: OTI3F6]

Catalog Number: M03169

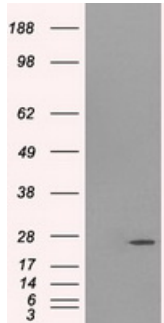
Overview

Product Name	Anti-PSMD10 Mouse Monoclonal Antibody [Clone ID: OTI3F6]
Reactive Species	Human, Mouse, Rat
Description	Boster Bio Anti-PSMD10 mouse monoclonal antibody, clone OTI3F6 (formerly 3F6). Catalog# M03169. Tested in FC, WB. This antibody reacts with Human, Mouse, Rat.
Application	Flow Cytometry, WB
Clonality	Monoclonal OTI3F6
Formulation	PBS (pH 7.3) containing 1% stabilizing protein, 50% glycerol and 0.02% sodium azide. This antibody is supplied in a stabilized formulation. Compatibility with conjugation reactions depends on the chemistry of the conjugation method used. For conjugation methods that are not compatible with the stabilizing components present in this formulation, a carrier-free antibody format is required.
Storage Instructions	Store at -20°C as received.
Host	Mouse
Uniprot ID	O75832

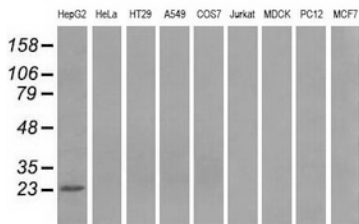
Technical Details

Immunogen	Full length human recombinant protein of human PSMD10 (NP_002805) produced in HEK293T cell.
Isotype	IgG1
Concentration	1 mg/ml
Purification	Purified from mouse ascites fluids or tissue culture supernatant by affinity chromatography (protein A/G)
Suggested Dilutions	WB 1:2000 Flow Cytometry 1:100

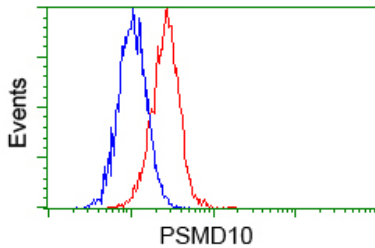
Anti-PSMD10 Mouse Monoclonal Antibody [Clone ID: OTI3F6] (M03169) Images



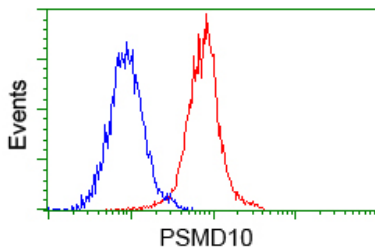
HEK293T cells were transfected with the pCMV6-ENTRY control (Left lane) or pCMV6-ENTRY PSMD10 (Right lane) cDNA for 48 hrs and lysed. Equivalent amounts of cell lysates (5 ug per lane) were separated by SDS-PAGE and immunoblotted with anti-PSMD10.



Western blot analysis of extracts (35ug) from 9 different cell lines by using anti-PSMD10 monoclonal antibody.



Flow cytometric analysis of HeLa cells



Flow cytometric analysis of Jurkat cells

Submit a product review to [Biocompare.com](https://www.biocompare.com)

Submit a review of this product to [Biocompare.com](https://www.biocompare.com) to receive a \$20 Amazon.com giftcard! Your reviews help your fellow scientists make the right decisions. Thank you for your contribution.



Anti-PSMD10 Mouse Monoclonal Antibody [Clone ID: OTI3F6]

For Research Use Only. Not for use in diagnostic procedures.