

Anti-Rictor Rabbit Monoclonal Antibody

Catalog Number: M03195-1

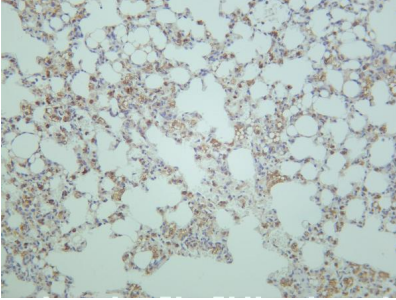
Overview

Product Name	Anti-Rictor Rabbit Monoclonal Antibody
Reactive Species	Human, Mouse
Description	This Recombinant Rabbit Monoclonal Antibody detects endogenous levels of Rictor protein. Validated for research with WB,IHC,IF,IP,ELISA applications. Anti Rictor is reactive for Human, Mouse samples
Application	ELISA, IP, IF, IHC, WB
Clonality	Monoclonal
Formulation	PBS, 50% glycerol, 0.05% Proclin 300, 0.05% stabilizing protein This antibody is supplied in a stabilized formulation. Compatibility with conjugation reactions depends on the chemistry of the conjugation method used. For conjugation methods that are not compatible with the stabilizing components present in this formulation, a carrier-free antibody format is required.
Storage Instructions	Store at -20°C/1 year
Host	Rabbit
Uniprot ID	Q6R327

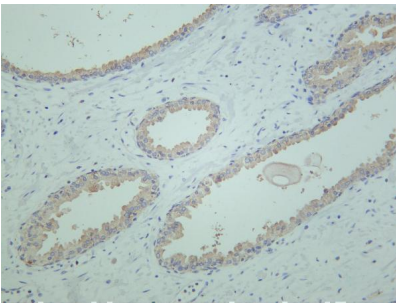
Technical Details

Isotype	IgG, Kappa
Purification	Protein A
Suggested Dilutions	IHC 1:200-1:1000 WB 1:2000-1:10000 IF 1:200-1:1000 ELISA 1:5000-1:20000 IP 1:50-1:200

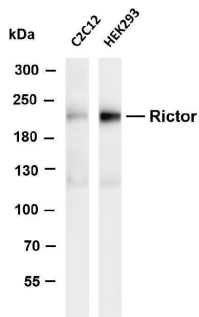
Anti-Rictor Rabbit Monoclonal Antibody (M03195-1) Images



Mouse lung was stained with anti-Rictor rabbit antibody



Human prostate was stained with anti-Rictor rabbit antibody



Various whole cell lysates were separated by 4-8% SDS-PAGE, and the membrane was blotted with anti-Rictor antibody. The HRP-conjugated Goat anti-Rabbit IgG(H + L) antibody was used to detect the antibody. Lane 1: C2C12 Lane 2: HEK293 Predicted band size: 192kDa Observed band size: 192kDa

Submit a product review to Biocompare.com

Submit a review of this product to Biocompare.com to receive a \$20 Amazon.com giftcard! Your reviews help your fellow scientists make the right decisions. Thank you for your contribution.



Anti-Rictor Rabbit Monoclonal Antibody

For Research Use Only. Not for use in diagnostic procedures.