

## Anti-LIPG Mouse Monoclonal Antibody [Clone ID: OTI4A8]

Catalog Number: M03211

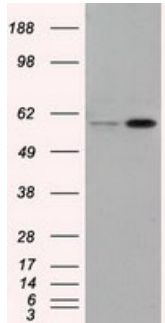
### Overview

Product Name	Anti-LIPG Mouse Monoclonal Antibody [Clone ID: OTI4A8]
Reactive Species	Human
Description	Boster Bio LIPG mouse monoclonal antibody, clone OTI4A8 (formerly 4A8). Catalog# M03211. Tested in FC, IF, IHC, IP, WB. This antibody reacts with Human.
Application	Flow Cytometry, IP, IF, IHC, WB
Clonality	Monoclonal OTI4A8
Formulation	PBS (pH 7.3) containing 1% stabilizing protein, 50% glycerol and 0.02% sodium azide. This antibody is supplied in a stabilized formulation. Compatibility with conjugation reactions depends on the chemistry of the conjugation method used. For conjugation methods that are not compatible with the stabilizing components present in this formulation, a carrier-free antibody format is required.
Storage Instructions	Store at -20°C as received.
Host	Mouse
Uniprot ID	Q9Y5X9

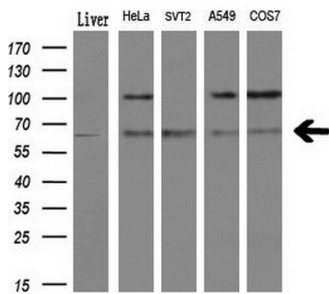
### Technical Details

Immunogen	Full length human recombinant protein of human LIPG (NP_006024) produced in HEK293T cell.
Isotype	IgG2a
Concentration	0.87 mg/ml
Purification	Purified from mouse ascites fluids or tissue culture supernatant by affinity chromatography (protein A/G)
Suggested Dilutions	WB 1:1000 IHC 1:50 IF 1:100 Flow Cytometry 1:100 IP 2ug/500ul

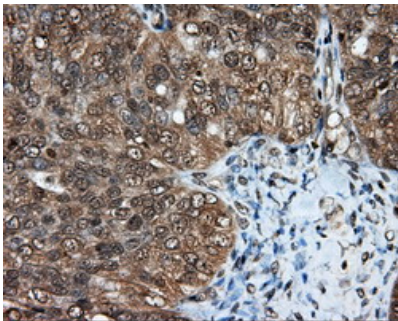
## Anti-LIPG Mouse Monoclonal Antibody [Clone ID: OTI4A8] (M03211) Images



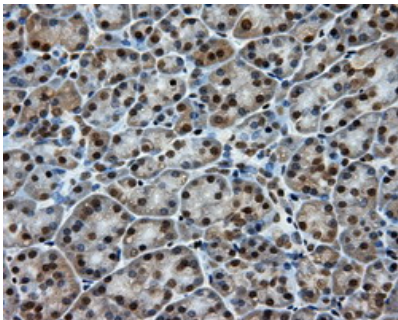
HEK293T cells were transfected with the pCMV6-ENTRY control (Left lane) or pCMV6-ENTRY LIPG (Right lane) cDNA for 48 hrs and lysed. Equivalent amounts of cell lysates (5 ug per lane) were separated by SDS-PAGE and immunoblotted with anti-LIPG.



Western blot analysis of extracts (10ug) from 4 different cell lines and 1 human tissue by using anti-LIPG monoclonal antibody at 1:200 dilution.

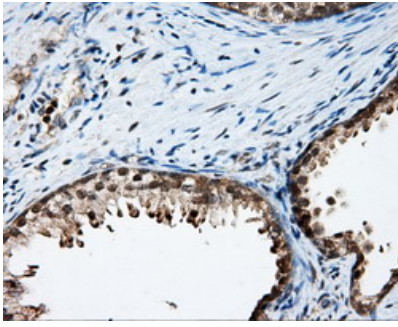


Immunohistochemical staining of paraffin-embedded Adenocarcinoma of Human ovary tissue using anti-LIPG mouse monoclonal antibody. (Heat-induced epitope retrieval by 10mM citric buffer)

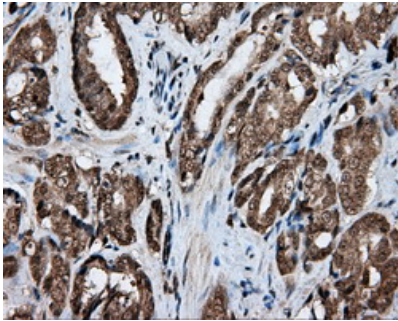


Immunohistochemical staining of paraffin-embedded Human pancreas tissue within the normal limits using anti-LIPG mouse monoclonal antibody. (Heat-induced epitope retrieval by 10mM citric buffer)

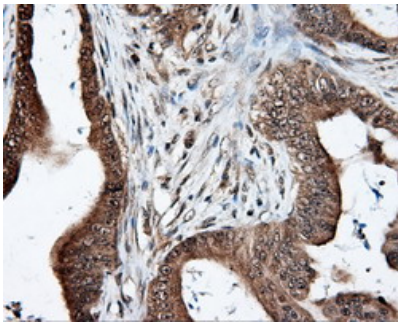
Immunohistochemical staining of paraffin-embedded Human prostate tissue within the normal limits using anti-LIPG mouse monoclonal antibody. (Heat-induced epitope retrieval by 10mM citric buffer)



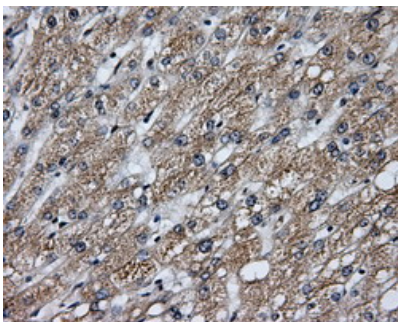
Immunohistochemical staining of paraffin-embedded Carcinoma of Human prostate tissue using anti-LIPG mouse monoclonal antibody. (Heat-induced epitope retrieval by 10mM citric buffer)



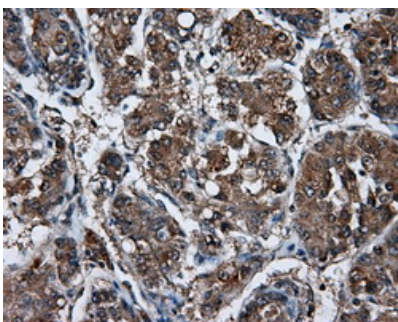
Immunohistochemical staining of paraffin-embedded Adenocarcinoma of Human colon tissue using anti-LIPG mouse monoclonal antibody. (Heat-induced epitope retrieval by 10mM citric buffer)

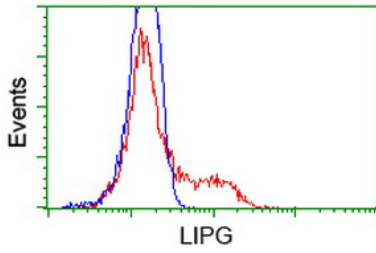


Immunohistochemical staining of paraffin-embedded Human liver tissue within the normal limits using anti-LIPG mouse monoclonal antibody. (Heat-induced epitope retrieval by 10mM citric buffer)

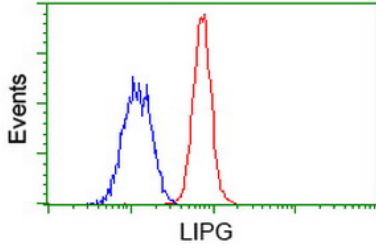


Immunohistochemical staining of paraffin-embedded Carcinoma of Human liver tissue using anti-LIPG mouse monoclonal antibody. (Heat-induced epitope retrieval by 10mM citric buffer)

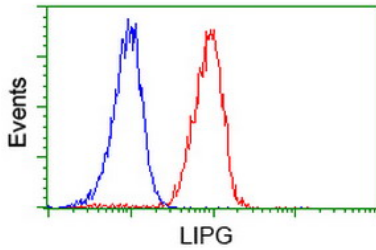




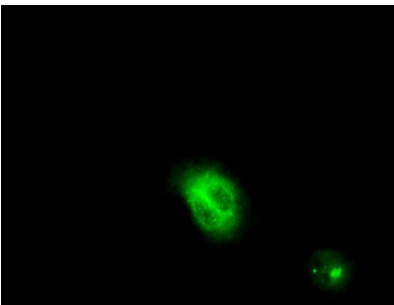
HEK293T cells transfected with either LIPG (Myc-DDK-tagged) overexpress plasmid (Red) or empty vector control plasmid (Blue) were immunostained by anti-LIPG antibody (M03211)



Flow cytometric Analysis of HeLa cells



Flow cytometric Analysis of Jurkat cells



Anti-LIPG mouse monoclonal antibody (M03211) immunofluorescent staining of COS7 cells transiently transfected by pCMV6-ENTRY LIPG.

## Submit a product review to Biocompare.com

Submit a review of this product to Biocompare.com to receive a \$20 Amazon.com giftcard! Your reviews help your fellow scientists make the right decisions. Thank you for your contribution.



Anti-LIPG Mouse Monoclonal Antibody [Clone ID: OTI4A8]

For Research Use Only. Not for use in diagnostic procedures.