

Anti-Myosin Light Chain 2 Rabbit Monoclonal Antibody

Catalog Number: M03215

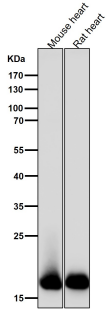
Overview

Product Name	Anti-Myosin Light Chain 2 Rabbit Monoclonal Antibody
Reactive Species	Human, Mouse, Rat
Description	Boster Bio Anti-Myosin Light Chain 2 Rabbit Monoclonal Antibody catalog # M03215. Tested in WB, IHC, IP applications. This antibody reacts with Human, Mouse, Rat.
Application	IP, IHC, WB
Clonality	Monoclonal FHO-13
Formulation	Rabbit IgG in phosphate buffered saline, pH 7.4, 150mM NaCl, 0.02% sodium azide and 50% glycerol, 0.4-0.5mg/ml BSA.
Storage Instructions	Store at -20°C for one year. For short term storage and frequent use, store at 4°C for up to one month. Avoid repeated freeze-thaw cycles.
Host	Rabbit
Uniprot ID	P10916

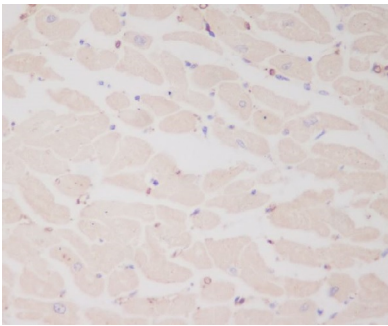
Technical Details

Immunogen	A synthesized peptide derived from human Myosin Light Chain 2
Isotype	Rabbit IgG
Form	Liquid
Concentration	Actual concentration vary by lot. Use suggested dilution ratio to decide dilution procedure.
Purification	Affinity-chromatography
Suggested Dilutions	WB 1:1000-1:5000 IHC 1:50-1:200 IP 1:50

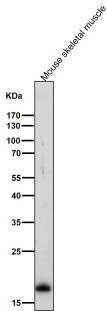
Anti-Myosin Light Chain 2 Rabbit Monoclonal Antibody (M03215) Images



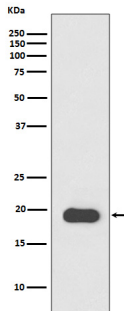
All lanes use the Antibody at 1:5K dilution for 1 hour at room temperature.



Immunohistochemical analysis of paraffin-embedded human heart, using Myosin Light Chain 2 Antibody.



All lanes use the Antibody at 1:5K dilution for 1 hour at room temperature.



Western blot analysis of Myosin Light Chain 2 expression in Mouse heart lysate.

Submit a product review to Biocompare.com

Submit a review of this product to Biocompare.com to receive a \$20 Amazon.com giftcard! Your reviews help your fellow scientists make the right decisions. Thank you for your contribution.



Anti-Myosin Light Chain 2 Rabbit Monoclonal Antibody