

## Anti-GLUT3 SLC2A3 Rabbit Monoclonal Antibody

Catalog Number: M03259

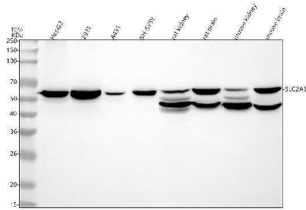
### Overview

Product Name	Anti-GLUT3 SLC2A3 Rabbit Monoclonal Antibody
Reactive Species	Human, Mouse, Rat
Description	Boster Bio Anti-GLUT3 SLC2A3 Rabbit Monoclonal Antibody catalog # M03259. Tested in WB, IHC application. This antibody reacts with Human, Mouse, Rat.
Application	IHC, WB
Clonality	Monoclonal ABHB-19
Formulation	Rabbit IgG in stabilizing components, phosphate buffered saline, pH 7.4, 150mM NaCl, 0.02% sodium azide and 50% glycerol. *This antibody is supplied in a stabilized formulation. Compatibility with conjugation reactions depends on the chemistry of the conjugation method used. For conjugation methods that are not compatible with the stabilizing components present in this formulation, a carrier-free antibody format is required.
Storage Instructions	Store at -20°C for one year. For short term storage and frequent use, store at 4°C for up to one month. Avoid repeated freeze-thaw cycles.
Host	Rabbit
Uniprot ID	P11169

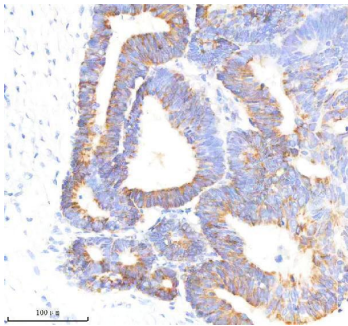
### Technical Details

Immunogen	A synthesized peptide derived from human GLUT3
Isotype	Rabbit IgG
Form	Liquid
Concentration	0.5mg/ml
Purification	Affinity-chromatography
Suggested Dilutions	WB 1:500-2000 IHC 1:50-200

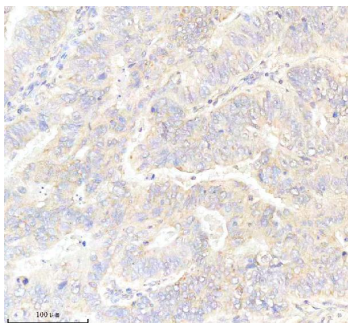
## Anti-GLUT3 SLC2A3 Rabbit Monoclonal Antibody (M03259) Images



Western blot analysis of GLUT3 using anti-GLUT3 antibody (M03259). Electrophoresis was performed on a 5-20% SDS-PAGE gel at 70V (Stacking gel) / 90V (Resolving gel) for 2-3 hours. The sample well of each lane was loaded with 30 ug of sample under reducing conditions. Lane 1: human HepG2 whole cell lysates, Lane 2: human 293T whole cell lysates, Lane 3: human A431 whole cell lysates, Lane 4: human SH-SY5Y whole cell lysates, Lane 5: rat kidney tissue lysates, Lane 6: rat brain tissue lysates, Lane 7: mouse kidney tissue lysates, Lane 8: mouse brain tissue lysates. After electrophoresis, proteins were transferred to a nitrocellulose membrane at 150 mA for 50-90 minutes. Blocked the membrane with 5% non-fat milk/TBS for 1.5 hour at RT. The membrane was incubated with rabbit anti-GLUT3 antigen affinity purified monoclonal antibody (Catalog # M03259) at 1:500 overnight at 4°C, then washed with TBS-0.1%Tween 3 times with 5 minutes each and probed with a goat anti-rabbit IgG-HRP secondary antibody at a dilution of 1:500 for 1.5 hour at RT. The signal is developed using an Enhanced Chemiluminescent detection (ECL) kit (Catalog # EK1002) with Tanon 5200 system. A specific band was detected for GLUT3 at approximately 54 kDa. The expected band size for GLUT3 is at 54 kDa.



IHC analysis of GLUT3/SLC2A3 using anti-GLUT3/SLC2A3 antibody (M03259). GLUT3/SLC2A3 was detected in a paraffin-embedded section of human colon cancer tissue. Heat mediated antigen retrieval was performed in EDTA buffer (pH 8.0, epitope retrieval solution). The tissue section was blocked with 10% goat serum. The tissue section was then incubated with 1:200 rabbit anti-GLUT3/SLC2A3 Antibody (M03259) overnight at 4°C. Peroxidase Conjugated Goat Anti-rabbit IgG was used as secondary antibody and incubated for 30 minutes at 37°C. The tissue section was developed using HRP Conjugated Rabbit IgG Super Vision Assay Kit (Catalog # SV0002) with DAB as the chromogen.



IHC analysis of GLUT3/SLC2A3 using anti-GLUT3/SLC2A3 antibody (M03259). GLUT3/SLC2A3 was detected in a paraffin-embedded section of human stomach cancer tissue. Heat mediated antigen retrieval was performed in EDTA buffer (pH 8.0, epitope retrieval solution). The tissue section was blocked with 10% goat serum. The tissue section was then incubated with 1:200 rabbit anti-GLUT3/SLC2A3 Antibody (M03259) overnight at 4°C. Peroxidase Conjugated Goat Anti-rabbit IgG was used as secondary antibody and incubated for 30 minutes at 37°C. The tissue section was developed using HRP Conjugated Rabbit IgG Super Vision Assay Kit (Catalog # SV0002) with DAB as the chromogen.

Submit a review of this product to Biocompare.com to receive a \$20 Amazon.com giftcard! Your reviews help your fellow scientists make the right decisions. Thank you for your contribution.



### Anti-GLUT3 SLC2A3 Rabbit Monoclonal Antibody

For Research Use Only. Not for use in diagnostic procedures.