

Anti-SLC2A3 Antibody (C-Term)

Catalog Number: M03259-1

About SLC2A3

Facilitative glucose transporter. Probably a neuronal glucose transporter.

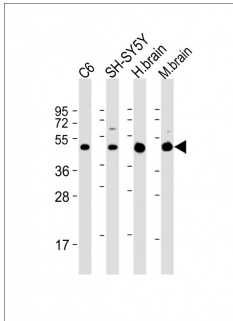
Overview

Product Name	Anti-SLC2A3 Antibody (C-Term)
Reactive Species	Human, Mouse, Rat
Description	Boster Bio Anti-SLC2A3 Antibody (C-Term) (Catalog # M03259-1). Tested in WB, Flow Cytometry application(s). This antibody reacts with Human, Mouse, Rat.
Application	Flow Cytometry, WB
Clonality	Polyclonal
Formulation	Purified polyclonal antibody supplied in PBS with 0.09% (W/V) sodium azide.
Storage Instructions	Maintain refrigerated at 2-8°C for up to 2 weeks. For long-term storage, store at -20°C in small aliquots to prevent freeze-thaw cycles.
Host	Rabbit
Uniprot ID	P11169

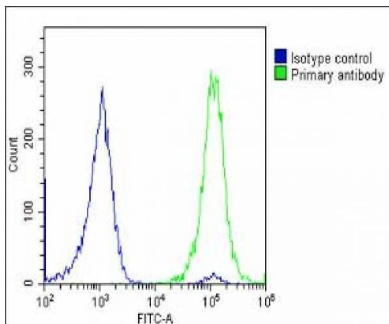
Technical Details

Immunogen	This SLC2A3 antibody is generated from a rabbit immunized with a KLH conjugated synthetic peptide between 432-463 amino acids from human SLC2A3.
Predicted Reactive Species	Rabbit
Isotype	Rabbit IgG
Purification	This antibody is purified through a protein A column, followed by peptide affinity purification.
Suggested Dilutions	WB: 1:2000 FC: 1:25

Anti-SLC2A3 Antibody (C-Term) (M03259-1) Images



All lanes : Anti-SLC2A3 Antibody (C-Term) at 1:2000 dilution
Lane 1: C6 whole cell lysate
Lane 2: SH-SY5Y whole cell lysate
Lane 3: human brain lysate
Lane 4: mouse brain lysate
Lysates/proteins at 20 µg per lane. Secondary Goat Anti-Rabbit IgG, (H+L), Peroxidase conjugated at 1/10000 dilution. Predicted band size : 54 kDa
Blocking/Dilution buffer: 5% NFDM/TBST.



Overlay histogram showing U-2 OS cells stained with M03259-1 (green line). The cells were fixed with 2% paraformaldehyde (10 min) and then permeabilized with 90% methanol for 10 min. The cells were then incubated in 2% bovine serum albumin to block non-specific protein-protein interactions followed by the antibody (M03259-1, 1:25 dilution) for 60 min at 37°C. The secondary antibody used was Goat-Anti-Rabbit IgG, DyLight® 488 Conjugated Highly Cross-Adsorbed at 1/200 dilution for 40 min at 37°C. Isotype control antibody (blue line) was rabbit IgG1 (1µg/1x10⁶ cells) used under the same conditions. Acquisition of >10, 000 events was performed.

Submit a product review to [Biocompare.com](https://www.biocompare.com)

Submit a review of this product to [Biocompare.com](https://www.biocompare.com) to receive a \$20 Amazon.com giftcard! Your reviews help your fellow scientists make the right decisions. Thank you for your contribution.



Anti-SLC2A3 Antibody (C-Term)

For Research Use Only. Not for use in diagnostic procedures.