

## Anti-Mesothelin Reference Antibody (anetumab-MMAE)

Catalog Number: M03266-3

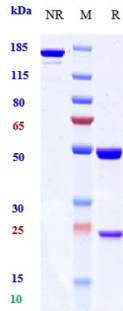
### Overview

|                      |  |
|----------------------|--|
| Product Name         | Anti-Mesothelin Reference Antibody (anetumab-MMAE)   |
| Reactive Species     | Cynomolgus monkey, Human, Mouse  |
| Description          | Boster Bio Anti-Mesothelin Reference Antibody (anetumab-MMAE) (Catalog # M03266-3). Tested in Flow Cytometry, ELISA, FTA. This antibody reacts with Cynomolgus monkey, Human, Mouse. Endotoxin: < 0.786EU/ug,determined by LAL method. Expression system: CHO Cell |
| Application          | ELISA, Flow Cytometry, Functional Assay, Kinetics  |
| Clonality            | Monoclonal   |
| Formulation          | Purified monoclonal antibody supplied in PBS, pH6.0, without preservative.This antibody is purified through a protein A column.  |
| Storage Instructions | Maintain refrigerated at 2-8°C for up to 2 weeks. For long-term storage, aliquot and store at -20°C to avoid repeated freeze-thaw cycles.  |
| Uniprot ID           | Q13421   |

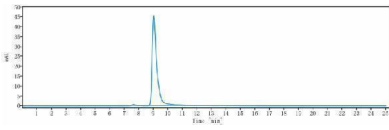
### Technical Details

|         |        |
|---------|--------|
| Isotype | IgG1   |
| Form    | Liquid |

## Anti-Mesothelin Reference Antibody (anetumab-MMAE) (M03266-3) Images



Anti-Mesothelin Reference Antibody (anetumab-MMAE) on SDS-PAGE under reducing (R) condition. The gel was stained with Coomassie Blue. The purity of the protein is greater than 90%



The purity of Anti-Mesothelin Reference Antibody (anetumab-MMAE) is more than 95%

### Submit a product review to Biocompare.com

Submit a review of this product to Biocompare.com to receive a \$20 Amazon.com giftcard! Your reviews help your fellow scientists make the right decisions. Thank you for your contribution.



Anti-Mesothelin Reference Antibody (anetumab-MMAE)

For Research Use Only. Not for use in diagnostic procedures.