

Anti-LXR alpha (NR1H3) Mouse Monoclonal Antibody [Clone ID: OT11A5]

Catalog Number: M03331-1

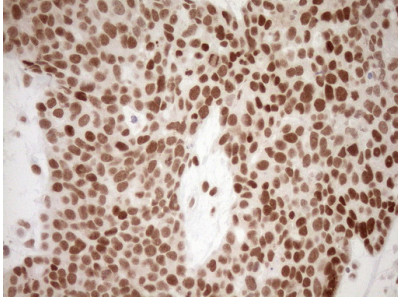
Overview

Product Name	Anti-LXR alpha (NR1H3) Mouse Monoclonal Antibody [Clone ID: OT11A5]
Reactive Species	Human, Mouse, Rat
Description	Boster Bio NR1H3 mouse monoclonal antibody, clone OT11A5 (formerly 1A5). Catalog# M03331-1. Tested in IHC, WB. This antibody reacts with Human, Mouse, Rat.
Conjugate	Unconjugated
Application	IHC, WB
Clonality	Monoclonal OT11A5
Formulation	PBS (pH 7.3) containing 1% stabilizing protein, 50% glycerol and 0.02% sodium azide. This antibody is supplied in a stabilized formulation. Compatibility with conjugation reactions depends on the chemistry of the conjugation method used. For conjugation methods that are not compatible with the stabilizing components present in this formulation, a carrier-free antibody format is required.
Storage Instructions	Store at -20°C for one year. For short term storage and frequent use, store at 4°C for up to one month. Avoid repeated freeze-thaw cycles.
Host	Mouse
Uniprot ID	Q13133

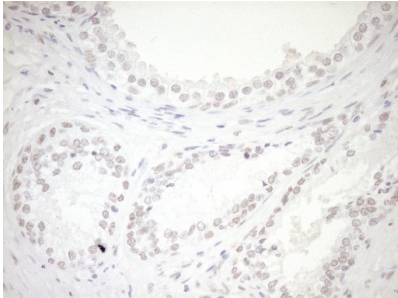
Technical Details

Immunogen	Human recombinant protein fragment corresponding to amino acids 69-329 of human NR1H3 (NP_005684) produced in E.coli.
Isotype	IgG2a
Concentration	1 mg/ml
Purification	Purified from mouse ascites fluids or tissue culture supernatant by affinity chromatography (protein A/G)
Suggested Dilutions	WB: 1:2000 IHC: 1:150

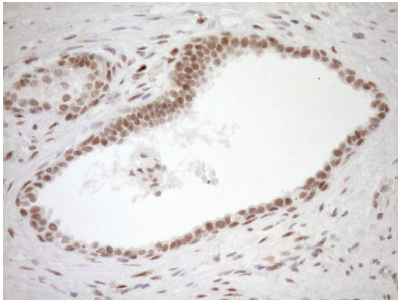
Anti-LXR alpha (NR1H3) Mouse Monoclonal Antibody [Clone ID: OT11A5] (M03331-1) Images



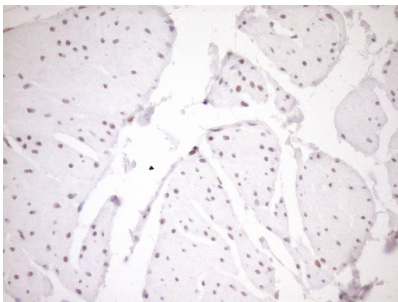
Immunohistochemical staining of paraffin-embedded Adenocarcinoma of Human endometrium tissue using anti-NR1H3 mouse monoclonal antibody. (Heat-induced epitope retrieval by 1mM EDTA in 10mM Tris buffer (pH8.5) at 120Å°C for 3min)



Immunohistochemical staining of paraffin-embedded Human prostate tissue within the normal limits using anti-NR1H3 mouse monoclonal antibody. (Heat-induced epitope retrieval by 1mM EDTA in 10mM Tris buffer (pH8.5) at 120Å°C for 3min)

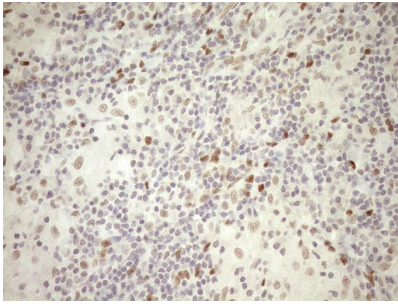


Immunohistochemical staining of paraffin-embedded Carcinoma of Human prostate tissue using anti-NR1H3 mouse monoclonal antibody. (Heat-induced epitope retrieval by 1mM EDTA in 10mM Tris buffer (pH8.5) at 120Å°C for 3min)

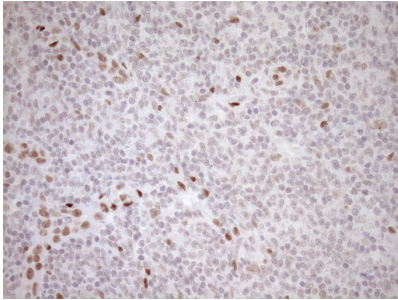


Immunohistochemical staining of paraffin-embedded Human bladder tissue within the normal limits using anti-NR1H3 mouse monoclonal antibody. (Heat-induced epitope retrieval by 1mM EDTA in 10mM Tris buffer (pH8.5) at 120Å°C for 3min)

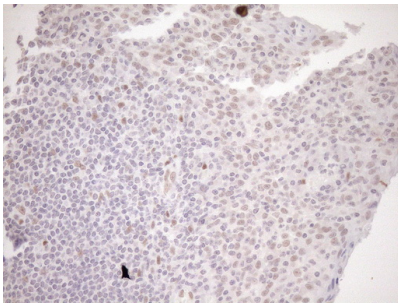
Immunohistochemical staining of paraffin-embedded Human lymph node tissue within the normal limits using anti-NR1H3 mouse monoclonal antibody. (Heat-induced epitope retrieval by 1mM EDTA in 10mM Tris buffer (pH8.5) at 120Å°C for 3min)



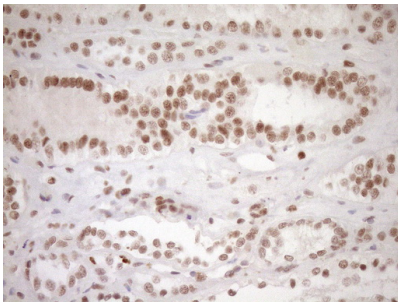
Immunohistochemical staining of paraffin-embedded Human lymphoma tissue using anti-NR1H3 mouse monoclonal antibody. (Heat-induced epitope retrieval by 1mM EDTA in 10mM Tris buffer (pH8.5) at 120Å°C for 3min)



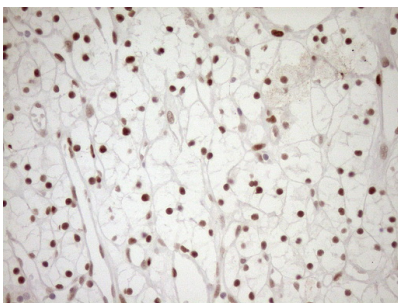
Immunohistochemical staining of paraffin-embedded Human tonsil within the normal limits using anti-NR1H3 mouse monoclonal antibody. (Heat-induced epitope retrieval by 1mM EDTA in 10mM Tris buffer (pH8.5) at 120Å°C for 3min)



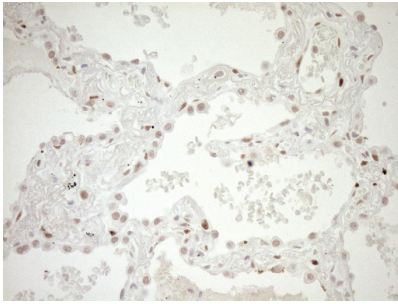
Immunohistochemical staining of paraffin-embedded Human Kidney tissue within the normal limits using anti-NR1H3 mouse monoclonal antibody. (Heat-induced epitope retrieval by 1mM EDTA in 10mM Tris buffer (pH8.5) at 120Å°C for 3min)



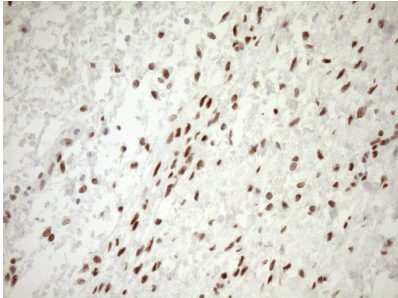
Immunohistochemical staining of paraffin-embedded Carcinoma of Human kidney tissue using anti-NR1H3 mouse monoclonal antibody. (Heat-induced epitope retrieval by 1mM EDTA in 10mM Tris buffer (pH8.5) at 120Å°C for 3min)



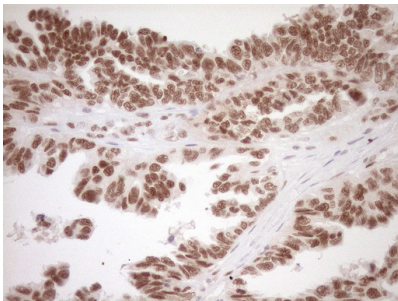
Immunohistochemical staining of paraffin-embedded Carcinoma of Human lung tissue using anti-NR1H3 mouse monoclonal antibody. (Heat-induced epitope retrieval by



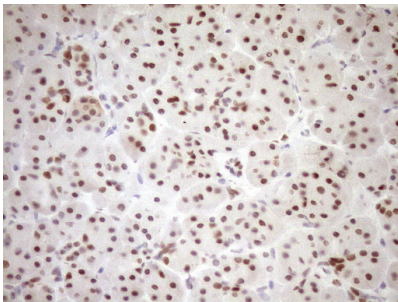
1mM EDTA in 10mM Tris buffer (pH8.5) at 120°C for 3min



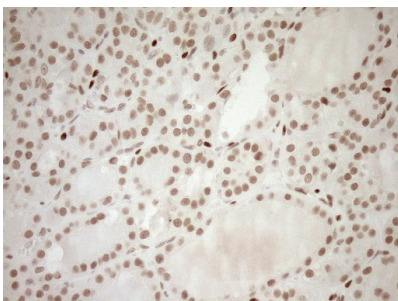
Immunohistochemical staining of paraffin-embedded Human Ovary tissue within the normal limits using anti-NR1H3 mouse monoclonal antibody. (Heat-induced epitope retrieval by 1mM EDTA in 10mM Tris buffer (pH8.5) at 120°C for 3min



Immunohistochemical staining of paraffin-embedded Adenocarcinoma of Human ovary tissue using anti-NR1H3 mouse monoclonal antibody. (Heat-induced epitope retrieval by 1mM EDTA in 10mM Tris buffer (pH8.5) at 120°C for 3min

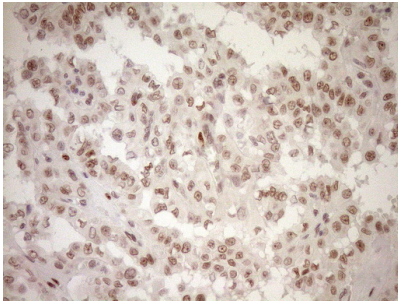


Immunohistochemical staining of paraffin-embedded Human pancreas tissue within the normal limits using anti-NR1H3 mouse monoclonal antibody. (Heat-induced epitope retrieval by 1mM EDTA in 10mM Tris buffer (pH8.5) at 120°C for 3min

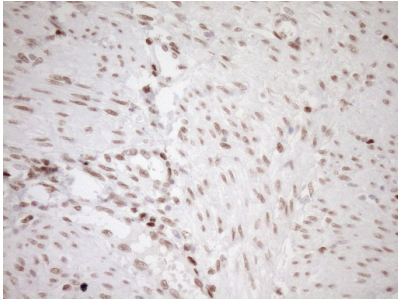


Immunohistochemical staining of paraffin-embedded Human thyroid tissue within the normal limits using anti-NR1H3 mouse monoclonal antibody. (Heat-induced epitope retrieval by 1mM EDTA in 10mM Tris buffer (pH8.5) at 120°C for 3min

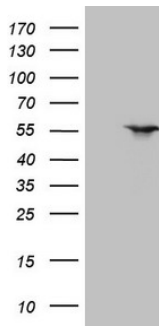
Immunohistochemical staining of paraffin-embedded Carcinoma of Human thyroid tissue using anti-NR1H3 mouse monoclonal antibody. (Heat-induced epitope retrieval by



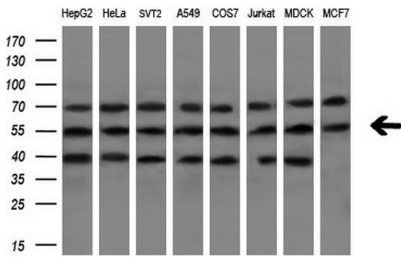
1mM EDTA in 10mM Tris buffer (pH8.5) at 120°C for 3min



Immunohistochemical staining of paraffin-embedded Human endometrium tissue within the normal limits using anti-NR1H3 mouse monoclonal antibody. (Heat-induced epitope retrieval by 1mM EDTA in 10mM Tris buffer (pH8.5) at 120°C for 3min)



HEK293T cells were transfected with the pCMV6-ENTRY control (Left lane) or pCMV6-ENTRY NR1H3 (Right lane) cDNA for 48 hrs and lysed. Equivalent amounts of cell lysates (5 ug per lane) were separated by SDS-PAGE and immunoblotted with anti-NR1H3 (1:2000).



Western blot analysis of extracts (10ug) from 8 different cell lines by using anti-NR1H3 monoclonal antibody (1:200).

Submit a product review to Biocompare.com

Submit a review of this product to Biocompare.com to receive a \$20 Amazon.com giftcard! Your reviews help your fellow scientists make the right decisions. Thank you for your contribution.



Anti-LXR alpha (NR1H3) Mouse Monoclonal Antibody [Clone ID: OT11A5]

For Research Use Only. Not for use in diagnostic procedures.