

## Anti-Neurotrophin 3 (NTF3) Mouse Monoclonal Antibody [Clone ID: OTI5C7]

Catalog Number: M03348

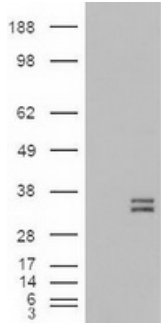
### Overview

Product Name	Anti-Neurotrophin 3 (NTF3) Mouse Monoclonal Antibody [Clone ID: OTI5C7]
Reactive Species	Human, Mouse, Rat
Description	Boster Bio Anti-NT3 (Neurotrophin 3) mouse monoclonal antibody, clone OTI5C7 (formerly 5C7). Catalog# M03348. Tested in IHC, WB. This antibody reacts with Human, Mouse, Rat.
Application	IHC, WB
Clonality	Monoclonal OTI5C7
Formulation	PBS (pH 7.3) containing 1% stabilizing protein, 50% glycerol and 0.02% sodium azide. This antibody is supplied in a stabilized formulation. Compatibility with conjugation reactions depends on the chemistry of the conjugation method used. For conjugation methods that are not compatible with the stabilizing components present in this formulation, a carrier-free antibody format is required.
Storage Instructions	Store at -20°C as received.
Host	Mouse
Uniprot ID	P20783

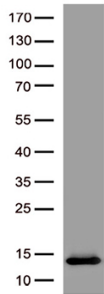
### Technical Details

Immunogen	Recombinant protein expressed in E.coli corresponding to amino acids 139-257 of human NT3
Isotype	IgG2a
Concentration	0.2 mg/ml
Purification	Purified from mouse ascites fluids or tissue culture supernatant by affinity chromatography (protein A/G)
Suggested Dilutions	WB: 1:5000 IHC 1:50

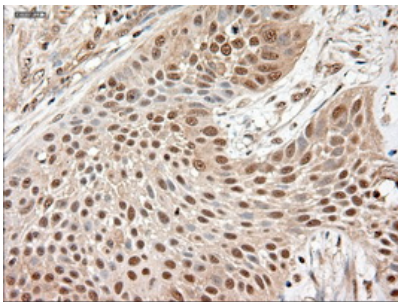
## Anti-Neurotrophin 3 (NTF3) Mouse Monoclonal Antibody [Clone ID: OTI5C7] (M03348) Images



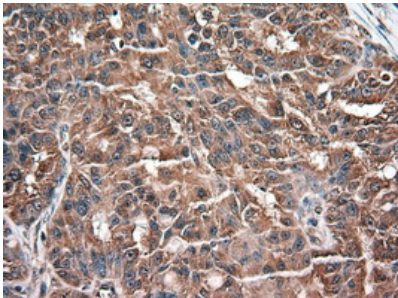
HEK293T cells were transfected with the pCMV6-ENTRY control (Left lane) or pCMV6-ENTRY NTF3 (Right lane) cDNA for 48 hrs and lysed. Equivalent amounts of cell lysates (5 ug per lane) were separated by SDS-PAGE and immunoblotted with anti-NTF3.



Western blot analysis of recombinant human NTF3 protein (Tyr139-Thr257)

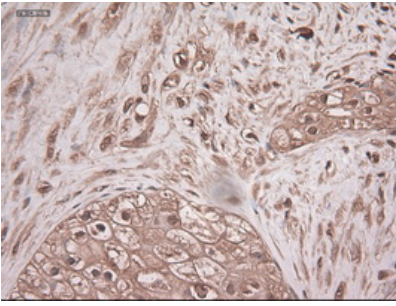


Immunohistochemical staining of paraffin-embedded Carcinoma of lung using anti-NTF3 (M03348) mouse monoclonal antibody (Heat-induced epitope retrieval by 10mM citric buffer)

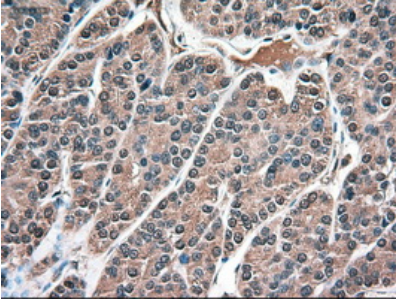


Immunohistochemical staining of paraffin-embedded Adenocarcinoma of ovary using anti-NTF3 (M03348) mouse monoclonal antibody (Heat-induced epitope retrieval by 10mM citric buffer)

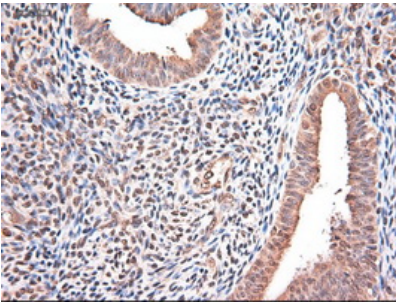
Immunohistochemical staining of paraffin-embedded Carcinoma of pancreas using anti-NTF3 (M03348) mouse monoclonal antibody (Heat-induced epitope retrieval by 10mM citric buffer)



Immunohistochemical staining of paraffin-embedded Carcinoma of thyroid using anti-NTF3 (M03348) mouse monoclonal antibody (Heat-induced epitope retrieval by 10mM citric buffer)



Immunohistochemical staining of paraffin-embedded endometrium within the normal limits using anti-NTF3 (M03348) mouse monoclonal antibody (Heat-induced epitope retrieval by 10mM citric buffer)



Immunohistochemical staining of paraffin-embedded breast within the normal limits using anti-NTF3 (M03348) mouse monoclonal antibody (Heat-induced epitope retrieval by 10mM citric buffer)

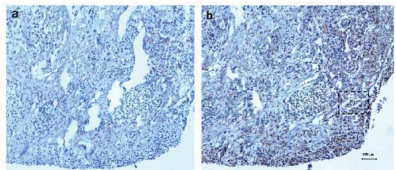
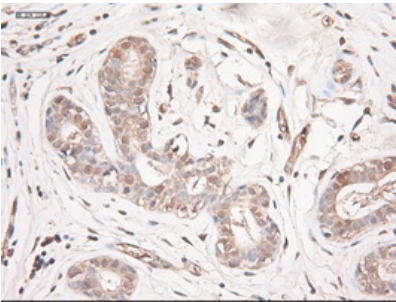
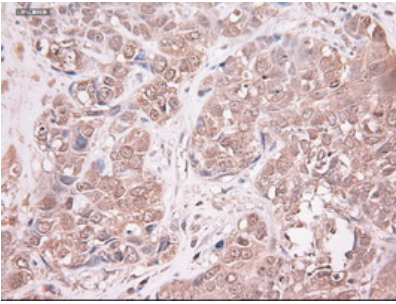
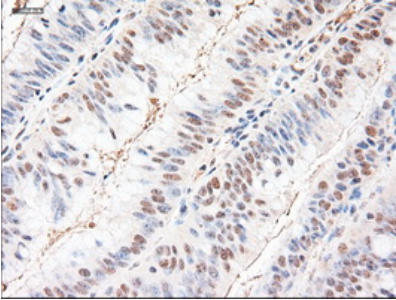


Figure from citation: Detection of NT-3 (NTF3) protein in brain metastases from breast cancer patients. (a) 100 magnification of the brain metastasis tissue section with the isotype-matched negative control antibody staining. (b) 100 magnification of the brain metastasis tissue section with the NT-3 antibody staining.

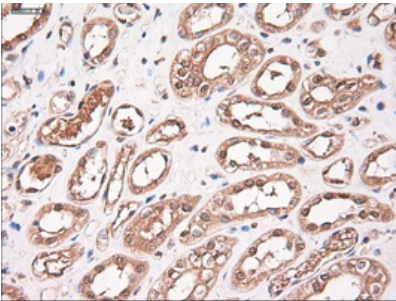
Immunohistochemical staining of paraffin-embedded Adenocarcinoma of breast using anti-NTF3 (M03348) mouse monoclonal antibody (Heat-induced epitope retrieval by 10mM citric buffer)



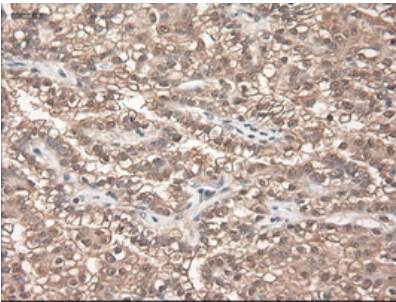
Immunohistochemical staining of paraffin-embedded Adenocarcinoma of colon using anti-NTF3 (M03348) mouse monoclonal antibody (Heat-induced epitope retrieval by 10mM citric buffer)



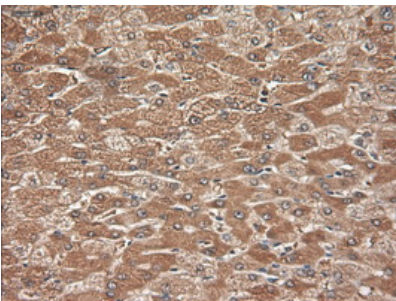
Immunohistochemical staining of paraffin-embedded kidney within the normal limits using anti-NTF3 (M03348) mouse monoclonal antibody (Heat-induced epitope retrieval by 10mM citric buffer)



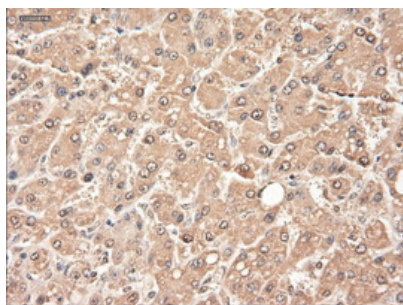
Immunohistochemical staining of paraffin-embedded Carcinoma of kidney using anti-NTF3 (M03348) mouse monoclonal antibody (Heat-induced epitope retrieval by 10mM citric buffer)



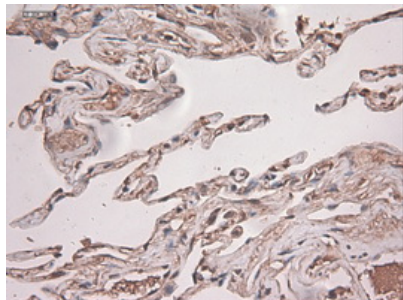
Immunohistochemical staining of paraffin-embedded liver within the normal limits using anti-NTF3 (M03348) mouse monoclonal antibody (Heat-induced epitope retrieval by 10mM citric buffer)



Immunohistochemical staining of paraffin-embedded Carcinoma of liver using anti-NTF3 (M03348) mouse monoclonal antibody (Heat-induced epitope retrieval by



10mM citric buffer



Immunohistochemical staining of paraffin-embedded lung within the normal limits using anti-NTF3 (M03348) mouse monoclonal antibody (Heat-induced epitope retrieval by 10mM citric buffer)

## Submit a product review to Biocompare.com

Submit a review of this product to Biocompare.com to receive a \$20 Amazon.com giftcard! Your reviews help your fellow scientists make the right decisions. Thank you for your contribution.



Anti-Neurotrophin 3 (NTF3) Mouse Monoclonal Antibody [Clone ID: OTI5C7]

For Research Use Only. Not for use in diagnostic procedures.