

## Anti-PEPD Mouse Monoclonal Antibody [Clone ID: OTI5D5]

Catalog Number: M03417

### Overview

Product Name	Anti-PEPD Mouse Monoclonal Antibody [Clone ID: OTI5D5]
Reactive Species	Human, Mouse, Rat
Description	Boster Bio PEPD mouse monoclonal antibody, clone OTI5D5 (formerly 5D5). Catalog# M03417. Tested in FC, IHC, WB. This antibody reacts with Human, Mouse, Rat.
Application	Flow Cytometry, IHC, WB
Clonality	Monoclonal OTI5D5
Formulation	PBS (pH 7.3) containing 1% stabilizing protein, 50% glycerol and 0.02% sodium azide. This antibody is supplied in a stabilized formulation. Compatibility with conjugation reactions depends on the chemistry of the conjugation method used. For conjugation methods that are not compatible with the stabilizing components present in this formulation, a carrier-free antibody format is required.
Storage Instructions	Store at -20°C as received.
Host	Mouse
Uniprot ID	P12955

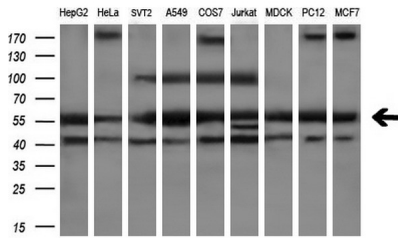
### Technical Details

Immunogen	Full length human recombinant protein of human PEPD (NP_000276) produced in HEK293T cell.
Isotype	IgG1
Concentration	0.81 mg/ml
Purification	Purified from mouse ascites fluids or tissue culture supernatant by affinity chromatography (protein A/G)
Suggested Dilutions	WB: 1:200 - 1:1000 Flow Cytometry 1:100

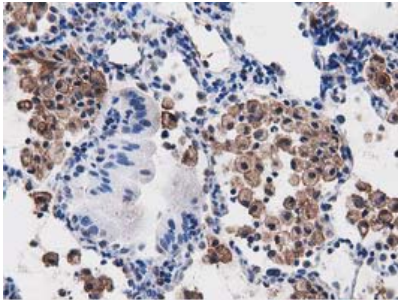
## Anti-PEPD Mouse Monoclonal Antibody [Clone ID: OTI5D5] (M03417) Images



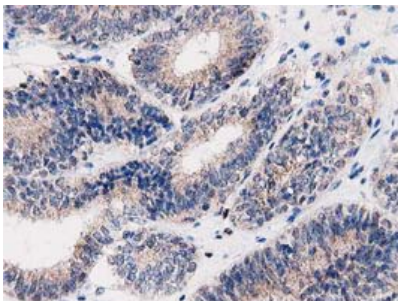
HEK293T cells were transfected with the pCMV6-ENTRY control (Left lane) or pCMV6-ENTRY PEPD (Right lane) cDNA for 48 hrs and lysed. Equivalent amounts of cell lysates (5 ug per lane) were separated by SDS-PAGE and immunoblotted with anti-PEPD.



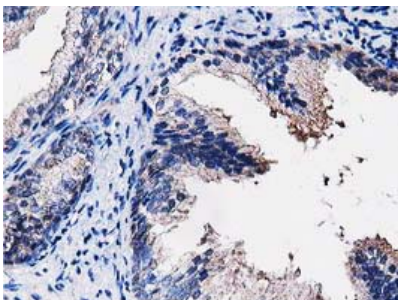
Western blot analysis of extracts (35ug) from 9 different cell lines by using anti-PEPD monoclonal antibody (HepG2: human; HeLa: human; SVT2: mouse; A549: human; COS7: monkey; Jurkat: human; MDCK: canine; PC12: rat; MCF7: human) (1:200).



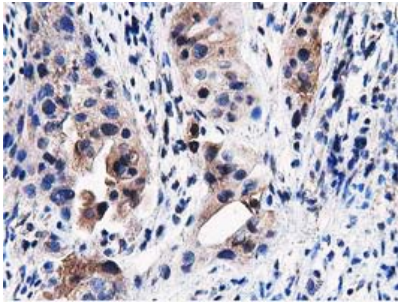
Immunohistochemical staining of paraffin-embedded Carcinoma of Human lung tissue using anti-PEPD mouse monoclonal antibody. (M03417)



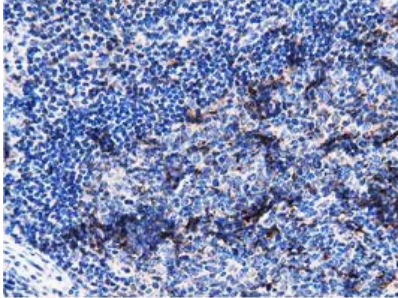
Immunohistochemical staining of paraffin-embedded Adenocarcinoma of Human endometrium tissue using anti-PEPD mouse monoclonal antibody. (M03417)



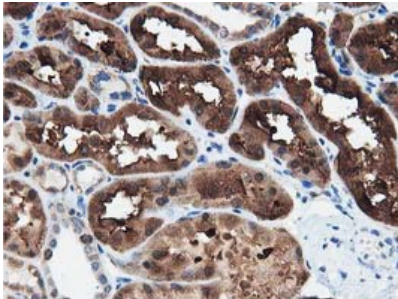
Immunohistochemical staining of paraffin-embedded Human prostate tissue within the normal limits using anti-PEPD mouse monoclonal antibody. (M03417)



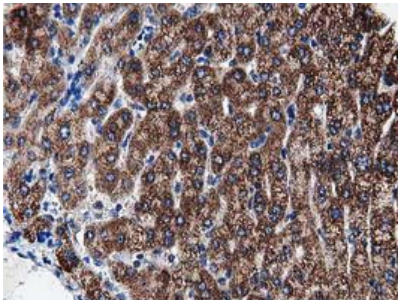
Immunohistochemical staining of paraffin-embedded Carcinoma of Human bladder tissue using anti-PEPD mouse monoclonal antibody. (M03417)



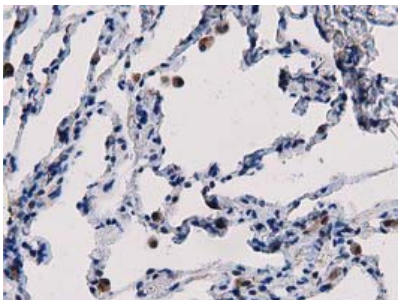
Immunohistochemical staining of paraffin-embedded Human lymph node tissue within the normal limits using anti-PEPD mouse monoclonal antibody. (M03417)



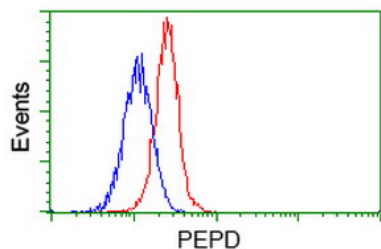
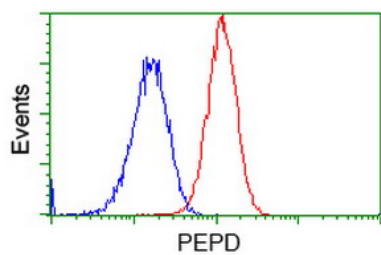
Immunohistochemical staining of paraffin-embedded Human Kidney tissue within the normal limits using anti-PEPD mouse monoclonal antibody. (M03417)



Immunohistochemical staining of paraffin-embedded Human liver tissue within the normal limits using anti-PEPD mouse monoclonal antibody. (M03417)



Immunohistochemical staining of paraffin-embedded Human lung tissue within the normal limits using anti-PEPD mouse monoclonal antibody. (M03417)



Flow cytometric Analysis of Jurkat cells

## Submit a product review to Biocompare.com

Submit a review of this product to Biocompare.com to receive a \$20 Amazon.com giftcard! Your reviews help your fellow scientists make the right decisions. Thank you for your contribution.



Anti-PEPD Mouse Monoclonal Antibody [Clone ID: OTI5D5]

For Research Use Only. Not for use in diagnostic procedures.