

## Anti-SP-B (Surfactant protein B) Rabbit Monoclonal Antibody, Clone#RM370

Catalog Number: M03441

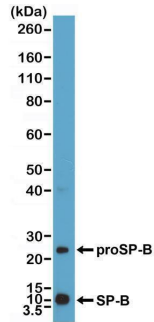
### Overview

Product Name	Anti-SP-B (Surfactant protein B) Rabbit Monoclonal Antibody, Clone#RM370
Reactive Species	Human
Description	Boster Bio Anti-SP-B (Surfactant protein B) Rabbit Monoclonal Antibody, Clone#RM370 (Catalog # M03441). Tested in IHC, WB applications. This antibody reacts with Human.
Application	IHC, WB
Clonality	Monoclonal RM370
Formulation	50% Glycerol/PBS with 1% stabilizing protein and 0.09% sodium azide This antibody is supplied in a stabilized formulation. Compatibility with conjugation reactions depends on the chemistry of the conjugation method used. For conjugation methods that are not compatible with the stabilizing components present in this formulation, a carrier-free antibody format is required.
Storage Instructions	Store at -20°C for one year. Avoid repeated freeze-thaw cycles.
Host	Rabbit
Uniprot ID	P07988

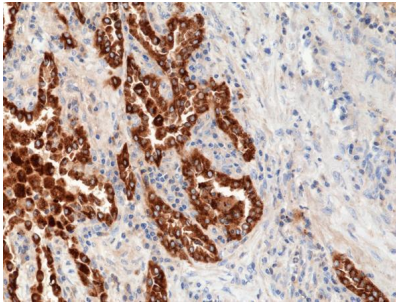
### Technical Details

Immunogen	A peptide corresponding to residues near C-terminus of human SP-B (Surfactant protein B)
Cross Reactivity	This antibody reacts to human SP-B (Surfactant protein B) and proSP-B
Isotype	Rabbit IgG
Form	Liquid
Concentration	0.5-1mg/ml, actual concentration vary by lot. Use suggested dilution ratio to decide dilution procedure.
Purification	Protein A affinity purified from an animal origin-free culture supernatant
Suggested Dilutions	Immunohistochemistry (IHC): 1:500-1:1000 dilution WB: 1:500-1:1000 dilution.

## Anti-SP-B (Surfactant protein B) Rabbit Monoclonal Antibody, Clone#RM370 (M03441) Images



Western Blotting result Western Blot of human lung tissue lysate using anti-SP-B rabbit monoclonal antibody (Clone RM370) at a 1:1000 dilution.



IHC result Immunohistochemical staining of formalin fixed and paraffin embedded human lung cancer tissue section using anti-SP-B rabbit monoclonal antibody (Clone RM370) at a 1:1000 dilution.

### Submit a product review to Biocompare.com

Submit a review of this product to Biocompare.com to receive a \$20 Amazon.com giftcard! Your reviews help your fellow scientists make the right decisions. Thank you for your contribution.



Anti-SP-B (Surfactant protein B) Rabbit Monoclonal Antibody, Clone#RM370

For Research Use Only. Not for use in diagnostic procedures.