

Anti-CMA1 Antibody (N-Term)

Catalog Number: M03446

About CMA1

Major secreted protease of mast cells with suspected roles in vasoactive peptide generation, extracellular matrix degradation, and regulation of gland secretion.

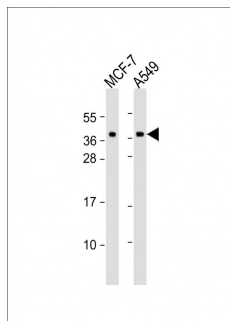
Overview

Product Name	Anti-CMA1 Antibody (N-Term)
Reactive Species	Human
Description	Boster Bio Anti-CMA1 Antibody (N-Term) (Catalog # M03446). Tested in WB application(s). This antibody reacts with Human.
Application	WB
Clonality	Polyclonal
Formulation	Purified polyclonal antibody supplied in PBS with 0.09% (W/V) sodium azide.
Storage Instructions	Maintain refrigerated at 2-8°C for up to 2 weeks. For long-term storage, store at -20°C in small aliquots to prevent freeze-thaw cycles.
Host	Rabbit
Uniprot ID	P23946

Technical Details

Immunogen	This CMA1 antibody is generated from a rabbit immunized with a KLH conjugated synthetic peptide between 84-118 amino acids from human CMA1.
Predicted Reactive Species	Human
Isotype	Rabbit IgG
Purification	This antibody is purified through a protein A column, followed by peptide affinity purification.
Suggested Dilutions	WB: 1:2000

Anti-CMA1 Antibody (N-Term) (M03446) Images



All lanes : Anti-CMA1 Antibody (N-Term) at 1:2000 dilution
Lane 1: MCF-7 whole cell lysates
Lane 2: A549 whole cell lysates
Lysates/proteins at 20 µg per lane.
Secondary Goat Anti-Rabbit IgG, (H+L), Peroxidase conjugated at 1/10000 dilution. Predicted band size : 27 kDa
Blocking/Dilution buffer: 5% NFDN/TBST.

Submit a product review to Biocompare.com

Submit a review of this product to Biocompare.com to receive a \$20 Amazon.com giftcard! Your reviews help your fellow scientists make the right decisions. Thank you for your contribution.



Anti-CMA1 Antibody (N-Term)

For Research Use Only. Not for use in diagnostic procedures.