

Anti-PDE2A Mouse Monoclonal Antibody [Clone ID: OTI3A4]

Catalog Number: M03472-1

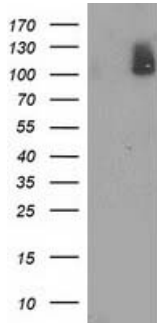
Overview

Product Name	Anti-PDE2A Mouse Monoclonal Antibody [Clone ID: OTI3A4]
Reactive Species	Human, Mouse, Rat
Description	Boster Bio PDE2A mouse monoclonal antibody, clone OTI3A4 (formerly 3A4). Catalog# M03472-1. Tested in FC, IF, IHC, WB. This antibody reacts with Human, Mouse, Rat.
Application	Flow Cytometry, IF, IHC, WB
Clonality	Monoclonal OTI3A4
Formulation	PBS (pH 7.3) containing 1% stabilizing protein, 50% glycerol and 0.02% sodium azide. This antibody is supplied in a stabilized formulation. Compatibility with conjugation reactions depends on the chemistry of the conjugation method used. For conjugation methods that are not compatible with the stabilizing components present in this formulation, a carrier-free antibody format is required.
Storage Instructions	Store at -20°C as received.
Host	Mouse
Uniprot ID	O00408

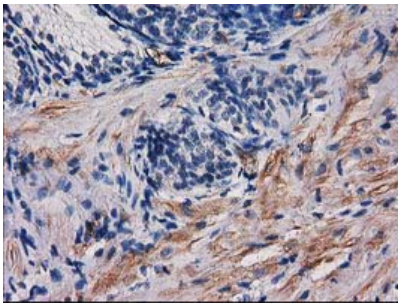
Technical Details

Immunogen	Full length human recombinant protein of human PDE2A (NP_002590) produced in HEK293T cell.
Isotype	IgG2b
Concentration	0.94 mg/ml
Purification	Purified from mouse ascites fluids or tissue culture supernatant by affinity chromatography (protein A/G)
Suggested Dilutions	WB 1:2000 IHC 1:150 IF 1:100 Flow Cytometry 1:100

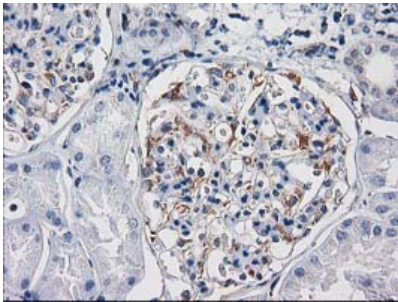
Anti-PDE2A Mouse Monoclonal Antibody [Clone ID: OTI3A4] (M03472-1) Images



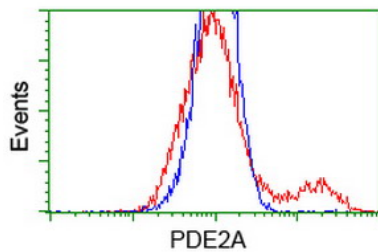
HEK293T cells were transfected with the pCMV6-ENTRY control (Left lane) or pCMV6-ENTRY PDE2A (Right lane) cDNA for 48 hrs and lysed. Equivalent amounts of cell lysates (5 ug per lane) were separated by SDS-PAGE and immunoblotted with anti-PDE2A.



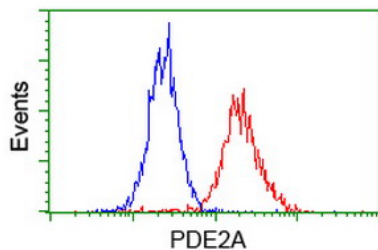
Immunohistochemical staining of paraffin-embedded Human prostate tissue within the normal limits using anti-PDE2A mouse monoclonal antibody. (Heat-induced epitope retrieval by 10mM citric buffer)



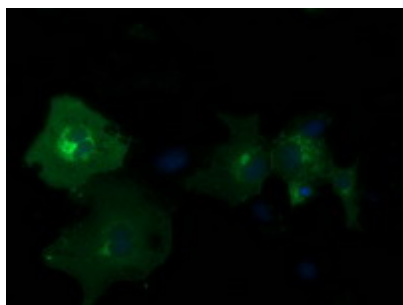
Immunohistochemical staining of paraffin-embedded Human Kidney tissue within the normal limits using anti-PDE2A mouse monoclonal antibody. (Heat-induced epitope retrieval by 10mM citric buffer)



HEK293T cells transfected with either PDE2A (Myc-DDK-tagged) overexpress plasmid (Red) or empty vector control plasmid (Blue) were immunostained by anti-PDE2A antibody (M03472-1)



Flow cytometric Analysis of HeLa cells



Anti-PDE2A mouse monoclonal antibody (M03472-1)
immunofluorescent staining of COS7 cells transiently
transfected by pCMV6-ENTRY PDE2A.

Submit a product review to Biocompare.com

Submit a review of this product to Biocompare.com to receive a \$20 Amazon.com giftcard! Your reviews help your fellow scientists make the right decisions. Thank you for your contribution.



Anti-PDE2A Mouse Monoclonal Antibody [Clone ID: OT13A4]

For Research Use Only. Not for use in diagnostic procedures.