

## Anti-Alpha B Crystallin (CRYAB) Mouse Monoclonal Antibody [Clone ID: OTI6G5]

Catalog Number: M03496-1

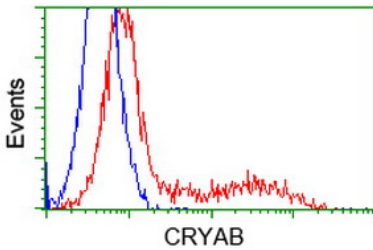
### Overview

Product Name	Anti-Alpha B Crystallin (CRYAB) Mouse Monoclonal Antibody [Clone ID: OTI6G5]
Reactive Species	Human, Mouse, Rat
Description	Boster Bio CRYAB (Alpha B Crystallin) mouse monoclonal antibody, clone OTI6G5 (formerly 6G5). Catalog# M03496-1. Tested in FC, IHC, IP, WB. This antibody reacts with Human, Mouse, Rat.
Conjugate	Unconjugated
Application	Flow Cytometry, IP, IHC, WB
Clonality	Monoclonal OTI6G5
Formulation	PBS (pH 7.3) containing 1% stabilizing protein, 50% glycerol and 0.02% sodium azide. This antibody is supplied in a stabilized formulation. Compatibility with conjugation reactions depends on the chemistry of the conjugation method used. For conjugation methods that are not compatible with the stabilizing components present in this formulation, a carrier-free antibody format is required.
Storage Instructions	Store at -20°C for one year. For short term storage and frequent use, store at 4°C for up to one month. Avoid repeated freeze-thaw cycles.
Host	Mouse
Uniprot ID	P02511

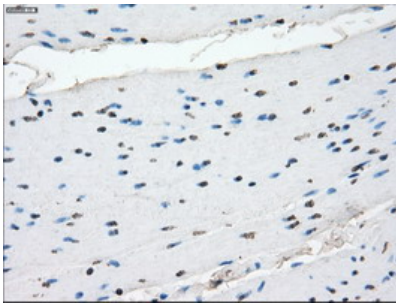
### Technical Details

Immunogen	Full length human recombinant protein of human CRYAB (NP_001876) produced in HEK293T cell.
Isotype	IgG2b
Concentration	1 mg/ml
Purification	Purified from mouse ascites fluids or tissue culture supernatant by affinity chromatography (protein A/G)
Suggested Dilutions	WB 1:1000 IHC 1:50 Flow Cytometry 1:100 IP 2ug/500ul

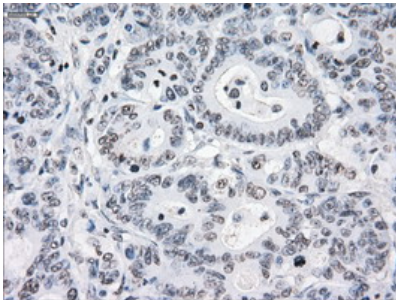
## Anti-Alpha B Crystallin (CRYAB) Mouse Monoclonal Antibody [Clone ID: OTI6G5] (M03496-1) Images



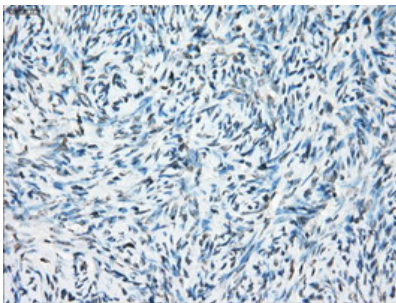
HEK293T cells transfected with either CRYAB (Myc-DDK-tagged) overexpress plasmid (Red) or empty vector control plasmid (Blue) were immunostained by anti-CRYAB antibody (M03496-1)



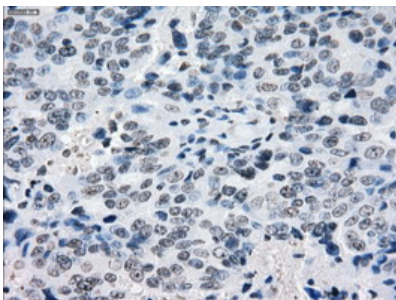
Immunohistochemical staining of paraffin-embedded Human colon tissue within the normal limits using anti-CRYAB mouse monoclonal antibody. (Heat-induced epitope retrieval by 10mM citric buffer)



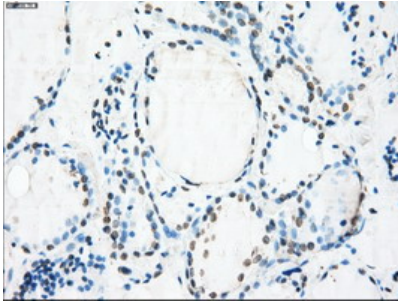
Immunohistochemical staining of paraffin-embedded Adenocarcinoma of Human colon tissue using anti-CRYAB mouse monoclonal antibody. (Heat-induced epitope retrieval by 10mM citric buffer)



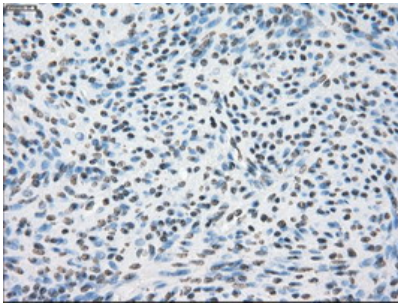
Immunohistochemical staining of paraffin-embedded Human Ovary tissue within the normal limits using anti-CRYAB mouse monoclonal antibody. (Heat-induced epitope retrieval by 10mM citric buffer)



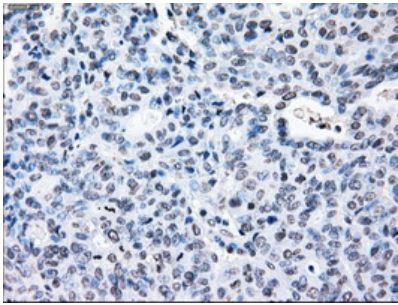
Immunohistochemical staining of paraffin-embedded Adenocarcinoma of Human ovary tissue using anti-CRYAB mouse monoclonal antibody. (Heat-induced epitope retrieval by 10mM citric buffer)



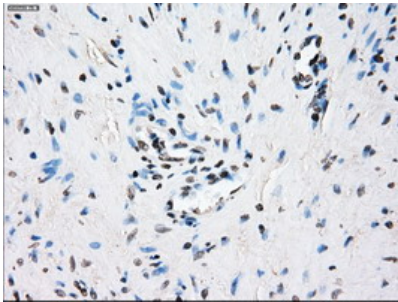
Immunohistochemical staining of paraffin-embedded Human thyroid tissue within the normal limits using anti-CRYAB mouse monoclonal antibody. (Heat-induced epitope retrieval by 10mM citric buffer)



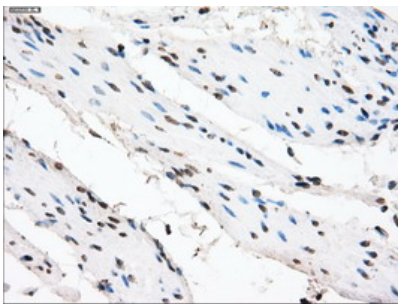
Immunohistochemical staining of paraffin-embedded Human endometrium tissue within the normal limits using anti-CRYAB mouse monoclonal antibody. (Heat-induced epitope retrieval by 10mM citric buffer)



Immunohistochemical staining of paraffin-embedded Adenocarcinoma of Human endometrium tissue using anti-CRYAB mouse monoclonal antibody. (Heat-induced epitope retrieval by 10mM citric buffer)

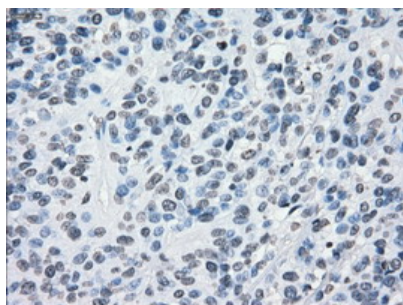


Immunohistochemical staining of paraffin-embedded Human prostate tissue within the normal limits using anti-CRYAB mouse monoclonal antibody. (Heat-induced epitope retrieval by 10mM citric buffer)

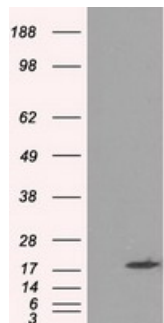


Immunohistochemical staining of paraffin-embedded Human bladder tissue within the normal limits using anti-CRYAB mouse monoclonal antibody. (Heat-induced epitope retrieval by 10mM citric buffer)

Immunohistochemical staining of paraffin-embedded Carcinoma of Human bladder tissue using anti-CRYAB mouse



monoclonal antibody. (Heat-induced epitope retrieval by 10mM citric buffer)



HEK293T cells were transfected with the pCMV6-ENTRY control (Left lane) or pCMV6-ENTRY CRYAB (Right lane) cDNA for 48 hrs and lysed. Equivalent amounts of cell lysates (5 ug per lane) were separated by SDS-PAGE and immunoblotted with anti-CRYAB.

**Submit a product review to [Biocompare.com](https://www.biocompare.com)**

Submit a review of this product to [Biocompare.com](https://www.biocompare.com) to receive a \$20 Amazon.com giftcard! Your reviews help your fellow scientists make the right decisions. Thank you for your contribution.



**Anti-Alpha B Crystallin (CRYAB) Mouse Monoclonal Antibody [Clone ID: OTI6G5]**

For Research Use Only. Not for use in diagnostic procedures.