

## Anti-Alpha B Crystallin (CRYAB) Mouse Monoclonal Antibody [Clone ID: OTI6D11]

Catalog Number: M03496-2

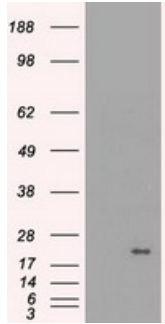
### Overview

Product Name	Anti-Alpha B Crystallin (CRYAB) Mouse Monoclonal Antibody [Clone ID: OTI6D11]
Reactive Species	Human, Monkey, Mouse, Rat
Description	Boster Bio CRYAB (Alpha B Crystallin) mouse monoclonal antibody, clone OTI6D11 (formerly 6D11). Catalog# M03496-2. Tested in FC, IF, IHC, IP, WB. This antibody reacts with Human, Monkey, Mouse, Rat.
Application	Flow Cytometry, IP, IF, IHC, WB
Clonality	Monoclonal OTI6D11
Formulation	PBS (pH 7.3) containing 1% BSA, 50% glycerol and 0.02% sodium azide.
Storage Instructions	Store at -20°C as received.
Host	Mouse
Uniprot ID	P02511

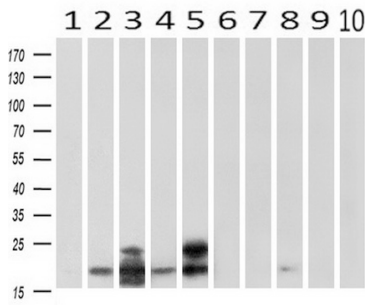
### Technical Details

Immunogen	Full length human recombinant protein of human CRYAB (NP_001876) produced in HEK293T cell.
Isotype	IgG1
Concentration	1 mg/ml
Purification	Purified from mouse ascites fluids or tissue culture supernatant by affinity chromatography (protein A/G)
Suggested Dilutions	Dilute the sample so that the expected range of concentrations fall within the detection range of this kit. If the expected range of concentration is unknown, a pilot test should be conducted to decide the optimal dilution ratio for your samples. Some PubMed article(s) citing the expression level of this target are as follows:

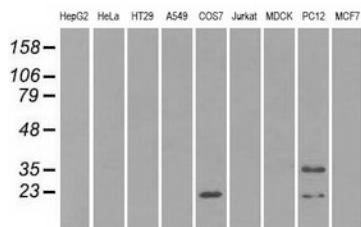
## Anti-Alpha B Crystallin (CRYAB) Mouse Monoclonal Antibody [Clone ID: OTI6D11] (M03496-2) Images



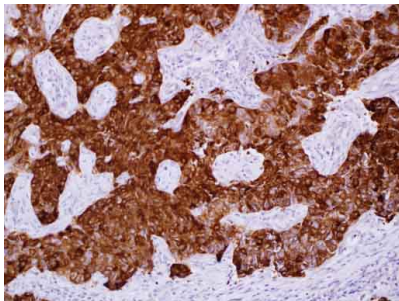
HEK293T cells were transfected with the pCMV6-ENTRY control (Left lane) or pCMV6-ENTRY CRYAB (Right lane) cDNA for 48 hrs and lysed. Equivalent amounts of cell lysates (5 ug per lane) were separated by SDS-PAGE and immunoblotted with anti-CRYAB.



Western blot analysis of extracts (10ug) from 10 Human tissue by using anti-CRYAB monoclonal antibody at 1:200 (1: Testis; 2: Omentum; 3: Uterus; 4: Breast; 5: Brain; 6: Liver; 7: Ovary; 8: Thyroid gland; 9: colon; 10: spleen).

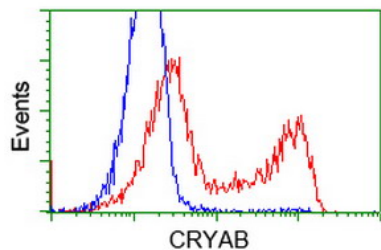
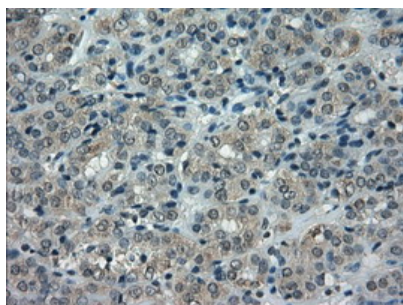


Western blot analysis of extracts (35ug) from 9 different cell lines by using anti-CRYAB monoclonal antibody (HepG2: human; HeLa: human; SVT2: mouse; A549: human; COS7: monkey; Jurkat: human; MDCK: canine; PC12: rat; MCF7: human).

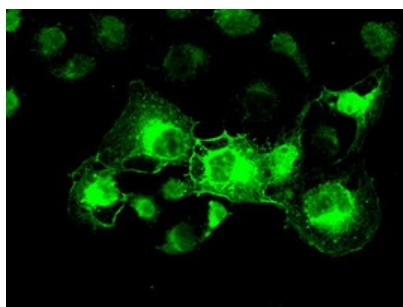


Immunohistochemical staining of paraffin-embedded human smooth muscle cancer tissue using anti-CRYAB mouse monoclonal antibody. (Heat-induced epitope retrieval)

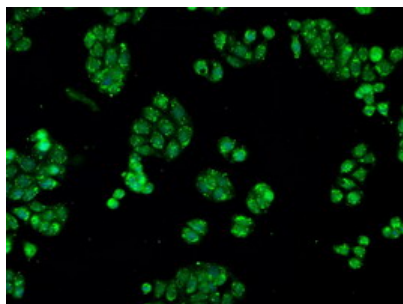
Immunohistochemical staining of paraffin-embedded Carcinoma of Human thyroid tissue using anti-CRYAB mouse monoclonal antibody. (Heat-induced epitope retrieval by 10mM citric buffer)



HEK293T cells transfected with either CRYAB (Myc-DDK-tagged) overexpress plasmid (Red) or empty vector control plasmid (Blue) were immunostained by anti-CRYAB antibody (M03496-2)



Anti-CRYAB mouse monoclonal antibody (M03496-2) immunofluorescent staining of COS7 cells transiently transfected by pCMV6-ENTRY CRYAB.



Immunofluorescent staining of HT29 cells using anti-CRYAB mouse monoclonal antibody (M03496-2).

**Submit a product review to Biocompare.com**

Submit a review of this product to Biocompare.com to receive a \$20 Amazon.com giftcard! Your reviews help your fellow scientists make the right decisions. Thank you for your contribution.



Anti-Alpha B Crystallin (CRYAB) Mouse Monoclonal Antibody [Clone ID: OTI6D11]