

Anti-SULT1A1 Mouse Monoclonal Antibody [Clone ID: OTI9B7]

Catalog Number: M03500-1

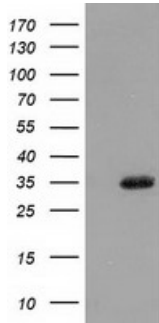
Overview

Product Name	Anti-SULT1A1 Mouse Monoclonal Antibody [Clone ID: OTI9B7]
Reactive Species	Human
Description	Boster Bio SULT1A1 mouse monoclonal antibody, clone OTI9B7 (formerly 9B7). Catalog# M03500-1. Tested in FC, IF, IHC, WB. This antibody reacts with Human.
Application	Flow Cytometry, IF, IHC, WB
Clonality	Monoclonal OTI9B7
Formulation	PBS (pH 7.3) containing 1% stabilizing protein, 50% glycerol and 0.02% sodium azide. This antibody is supplied in a stabilized formulation. Compatibility with conjugation reactions depends on the chemistry of the conjugation method used. For conjugation methods that are not compatible with the stabilizing components present in this formulation, a carrier-free antibody format is required.
Storage Instructions	Store at -20°C as received.
Host	Mouse
Uniprot ID	P50225

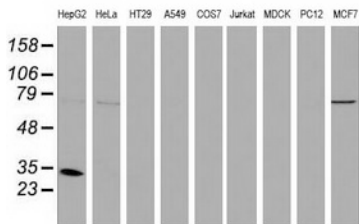
Technical Details

Immunogen	Full length human recombinant protein of human SULT1A1 (NP_001046) produced in HEK293T cell.
Isotype	IgG1
Concentration	0.49 mg/ml
Purification	Purified from mouse ascites fluids or tissue culture supernatant by affinity chromatography (protein A/G)
Suggested Dilutions	WB 1:500~2000 IHC 1:150 IF 1:100 Flow Cytometry 1:100

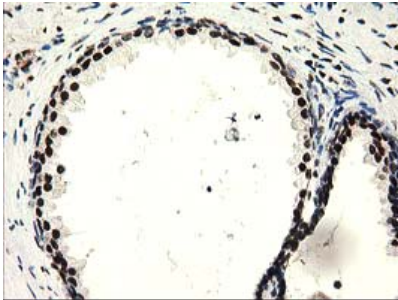
Anti-SULT1A1 Mouse Monoclonal Antibody [Clone ID: OTI9B7] (M03500-1) Images



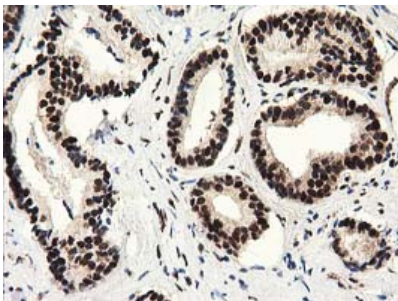
HEK293T cells were transfected with the pCMV6-ENTRY control (Left lane) or pCMV6-ENTRY SULT1A1 (Right lane) cDNA for 48 hrs and lysed. Equivalent amounts of cell lysates (5 ug per lane) were separated by SDS-PAGE and immunoblotted with anti-SULT1A1.



Western blot analysis of extracts (35ug) from 9 different cell lines by using anti-SULT1A1 monoclonal antibody.



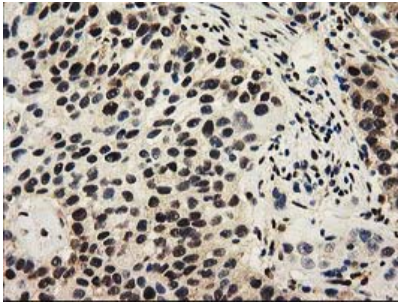
Immunohistochemical staining of paraffin-embedded Human prostate tissue within the normal limits using anti-SULT1A1 mouse monoclonal antibody. (Heat-induced epitope retrieval by 10mM citric buffer)



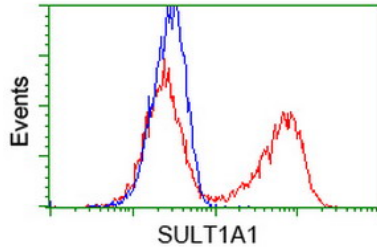
Immunohistochemical staining of paraffin-embedded Carcinoma of Human prostate tissue using anti-SULT1A1 mouse monoclonal antibody. (Heat-induced epitope retrieval by 10mM citric buffer)



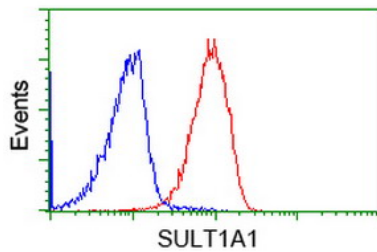
Immunohistochemical staining of paraffin-embedded Human bladder tissue within the normal limits using anti-SULT1A1 mouse monoclonal antibody. (Heat-induced epitope retrieval by 10mM citric buffer)



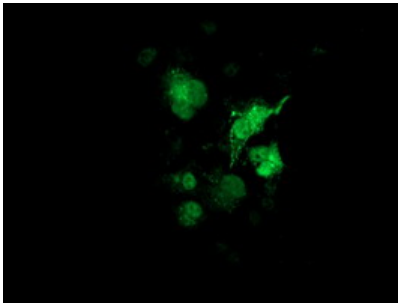
Immunohistochemical staining of paraffin-embedded Carcinoma of Human bladder tissue using anti-SULT1A1 mouse monoclonal antibody. (Heat-induced epitope retrieval by 10mM citric buffer)



HEK293T cells transfected with either SULT1A1 (Myc-DDK-tagged) overexpress plasmid (Red) or empty vector control plasmid (Blue) were immunostained by anti-SULT1A1 antibody (M03500-1)



Flow cytometric Analysis of Jurkat cells



Anti-SULT1A1 mouse monoclonal antibody (M03500-1) immunofluorescent staining of COS7 cells transiently transfected by pCMV6-ENTRY SULT1A1.

Submit a product review to Biocompare.com

Submit a review of this product to Biocompare.com to receive a \$20 Amazon.com giftcard! Your reviews help your fellow scientists make the right decisions. Thank you for your contribution.



Anti-SULT1A1 Mouse Monoclonal Antibody [Clone ID: OTI9B7]

For Research Use Only. Not for use in diagnostic procedures.