

Anti-ACHE Antibody (C-term)

Catalog Number: M03519

About ACHE

Terminates signal transduction at the neuromuscular junction by rapid hydrolysis of the acetylcholine released into the synaptic cleft. Role in neuronal apoptosis.

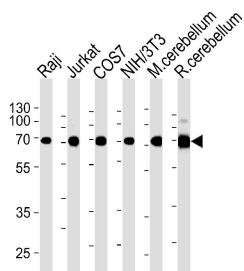
Overview

Product Name	Anti-ACHE Antibody (C-term)
Reactive Species	African green monkey, Human, Mouse, Rat
Description	Boster Bio Anti-ACHE Antibody (C-term) (Catalog # M03519). Tested in WB application(s). This antibody reacts with Human, Mouse, Rat, African green monkey.
Application	WB
Clonality	Monoclonal 684CT8.3.4
Formulation	Purified monoclonal antibody supplied in PBS with 0.09% (W/V) sodium azide.
Storage Instructions	Maintain refrigerated at 2-8°C for up to 2 weeks. For long-term storage, store at -20°C in small aliquots to prevent freeze-thaw cycles.
Host	Mouse
Uniprot ID	P22303

Technical Details

Immunogen	This ACHE antibody is generated from mouse immunized with a KLH conjugated synthetic peptide between 587-611 amino acids from the C-terminal region of human ACHE.
Predicted Reactive Species	Bovine, Rabbit
Isotype	IgG1
Purification	This antibody is purified through a protein G column, followed by dialysis against PBS.
Suggested Dilutions	Dilute the sample so that the expected range of concentrations fall within the detection range of this kit. If the expected range of concentration is unknown, a pilot test should be conducted to decide the optimal dilution ratio for your samples. Some PubMed article(s) citing the expression level of this target are as follows: Boster Bio's internal QC testing used: WB: 1:2000

Anti-ACHE Antibody (C-term) (M03519) Images



ACHE Antibody (C-term) western blot analysis in Raji, Jurkat, COS7, mouse NIH/3T3 cell line and mouse cerebellum, rat cerebellum tissue lysates (35ug/lane). This demonstrates the ACHE antibody detected the ACHE protein (arrow).

Submit a product review to Biocompare.com

Submit a review of this product to Biocompare.com to receive a \$20 Amazon.com giftcard! Your reviews help your fellow scientists make the right decisions. Thank you for your contribution.



Anti-ACHE Antibody (C-term)