

Anti-PI 3 Kinase Class 2A (PIK3C2A) Mouse Monoclonal Antibody [Clone ID: OTI3H2]

Catalog Number: M03530

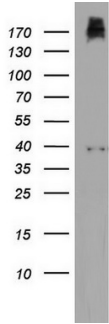
Overview

Product Name	Anti-PI 3 Kinase Class 2A (PIK3C2A) Mouse Monoclonal Antibody [Clone ID: OTI3H2]
Reactive Species	Human, Mouse, Rat
Description	Boster Bio PIK3C2A mouse monoclonal antibody, clone OTI3H2 (formerly 3H2). Catalog# M03530. Tested in IHC, WB. This antibody reacts with Human, Mouse, Rat.
Application	IHC, WB
Clonality	Monoclonal OTI3H2
Formulation	PBS (pH 7.3) containing 1% stabilizing protein, 50% glycerol and 0.02% sodium azide. This antibody is supplied in a stabilized formulation. Compatibility with conjugation reactions depends on the chemistry of the conjugation method used. For conjugation methods that are not compatible with the stabilizing components present in this formulation, a carrier-free antibody format is required.
Storage Instructions	Store at -20°C as received.
Host	Mouse
Uniprot ID	O00443

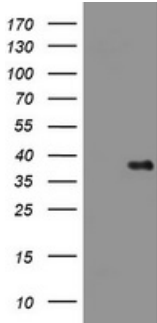
Technical Details

Immunogen	Human recombinant protein fragment corresponding to amino acids 230-560 of human PIK3C2A (NP_002636) produced in E.coli.
Isotype	IgG1
Concentration	1 mg/ml
Purification	Purified from mouse ascites fluids or tissue culture supernatant by affinity chromatography (protein A/G)
Suggested Dilutions	WB 1:2000 IHC 1:150

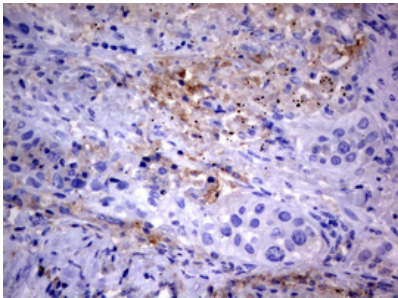
Anti-PI 3 Kinase Class 2A (PIK3C2A) Mouse Monoclonal Antibody [Clone ID: OTI3H2] (M03530) Images



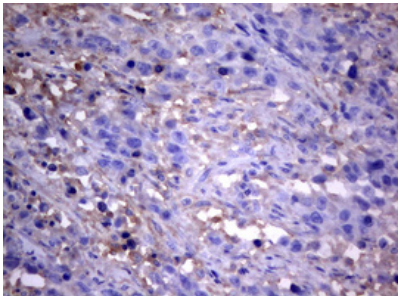
Western blot analysis of HT29 cell lysate (35ug) by using anti-PIK3C2A monoclonal antibody. Dilution: 1:500



E.coli lysate (left lane) and E.coli lysate expressing human recombinant protein fragment corresponding to amino acids 230-560 of human PIK3C2A (NP_002636) were separated by SDS-PAGE and immunoblotted with anti-PIK3C2A.

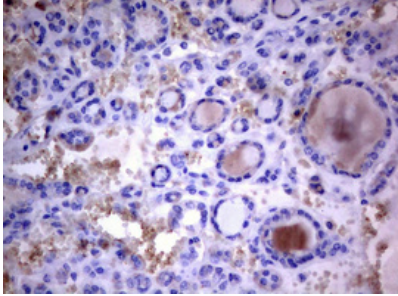
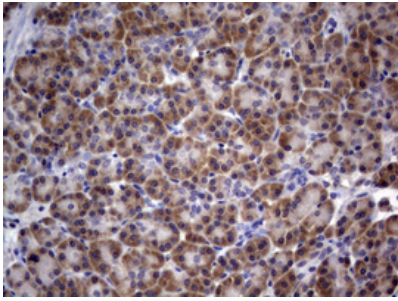


Immunohistochemical staining of paraffin-embedded Carcinoma of Human lung tissue using anti-PIK3C2A mouse monoclonal antibody. (Heat-induced epitope retrieval by 10mM citric buffer)

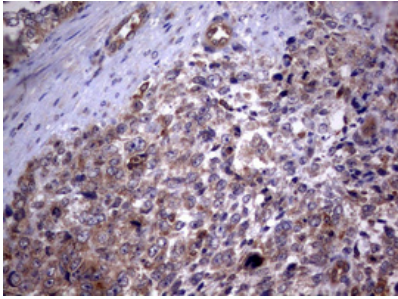


Immunohistochemical staining of paraffin-embedded Adenocarcinoma of Human ovary tissue using anti-PIK3C2A mouse monoclonal antibody. (Heat-induced epitope retrieval by 10mM citric buffer)

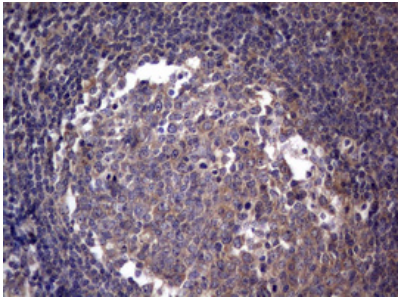
Immunohistochemical staining of paraffin-embedded Human pancreas tissue within the normal limits using anti-PIK3C2A mouse monoclonal antibody. (Heat-induced epitope retrieval by 10mM citric buffer)



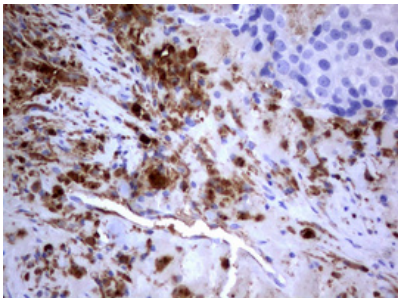
Immunohistochemical staining of paraffin-embedded Carcinoma of Human thyroid tissue using anti-PIK3C2A mouse monoclonal antibody. (Heat-induced epitope retrieval by 10mM citric buffer)



Immunohistochemical staining of paraffin-embedded Adenocarcinoma of Human endometrium tissue using anti-PIK3C2A mouse monoclonal antibody. (Heat-induced epitope retrieval by 10mM citric buffer)

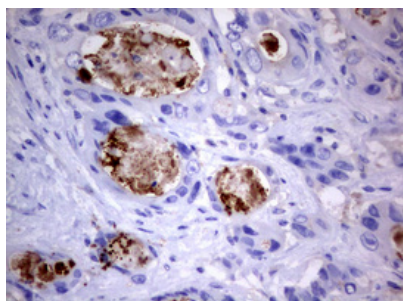


Immunohistochemical staining of paraffin-embedded Human tonsil within the normal limits using anti-PIK3C2A mouse monoclonal antibody. (Heat-induced epitope retrieval by 10mM citric buffer)

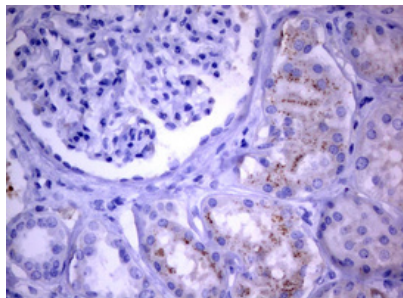


Immunohistochemical staining of paraffin-embedded Adenocarcinoma of Human breast tissue using anti-PIK3C2A mouse monoclonal antibody. (Heat-induced epitope retrieval by 10mM citric buffer)

Immunohistochemical staining of paraffin-embedded Adenocarcinoma of Human colon tissue using anti-PIK3C2A mouse monoclonal antibody. (Heat-induced epitope retrieval



by 10mM citric buffer



Immunohistochemical staining of paraffin-embedded Human Kidney tissue within the normal limits using anti-PIK3C2A mouse monoclonal antibody. (Heat-induced epitope retrieval by 10mM citric buffer)

Submit a product review to Biocompare.com

Submit a review of this product to Biocompare.com to receive a \$20 Amazon.com giftcard! Your reviews help your fellow scientists make the right decisions. Thank you for your contribution.



Anti-PI 3 Kinase Class 2A (PIK3C2A) Mouse Monoclonal Antibody [Clone ID: OT13H2]

For Research Use Only. Not for use in diagnostic procedures.